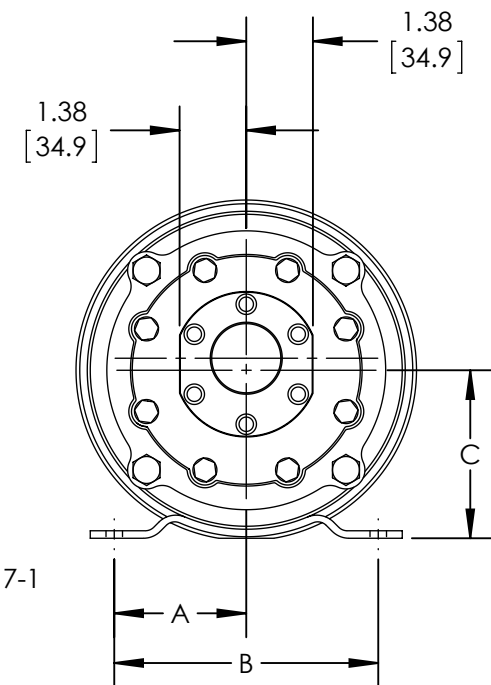
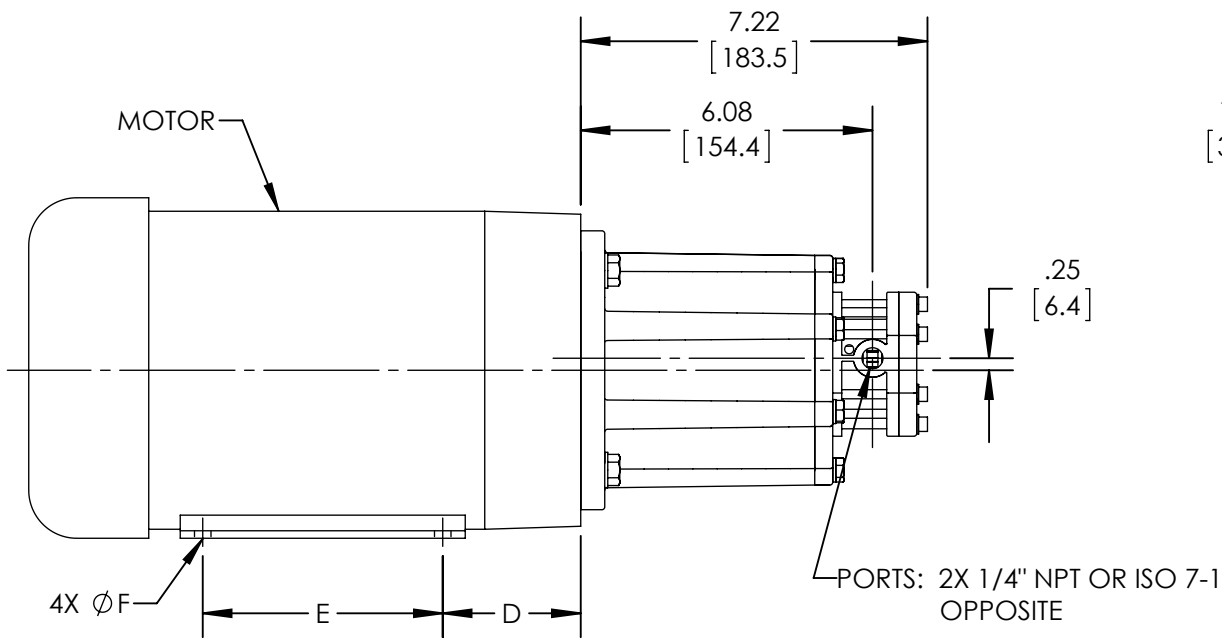
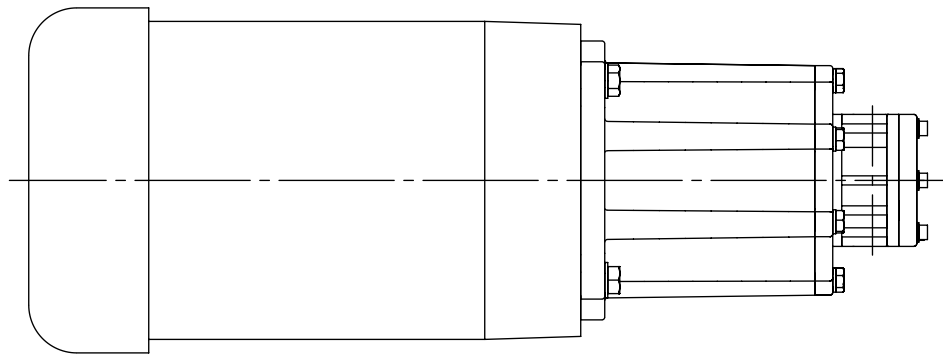


MOTOR FRAME	A	B	C	D	E	F
56C	2.44 [61.9]	4.88 [123.8]	3.50 [88.9]	2.63 [66.8]	3.00 [76.2]	.34 [8.7]
143TC	2.75 [69.9]	5.50 [139.7]	3.50 [88.9]	2.63 [66.8]	4.00 [101.6]	.34 [8.7]
145TC	2.75 [69.9]	5.50 [139.7]	3.50 [88.9]	2.63 [66.8]	5.00 [127.0]	.34 [8.7]
182C	3.75 [95.3]	7.50 [190.5]	4.50 [114.3]	3.38 [85.9]	4.50 [114.3]	.41 [10.3]
184C	3.75 [95.3]	7.50 [190.5]	4.50 [114.3]	3.38 [85.9]	5.50 [139.7]	.41 [10.3]

DOES NOT FIT FRAMES 182/184TC.



STANDARD MODEL: CMD-E02-M

STATE	Released	08/22/2012	DIMENSIONS ARE IN INCHES	VIKING PUMP	VIKING PUMP, INC. A Unit of IDEX Corporation Cedar Falls, IA 50613 U.S.A.	THIS DRAWING IS THE PROPERTY OF VIKING PUMP, INC. AND IS PROPRIETARY IN GENERAL AND DETAIL. IT SHALL NOT BE COPIED OR ITS CONTENTS REVEALED TO OUTSIDE PARTIES WITHOUT THE WRITTEN CONSENT OF VIKING PUMP, INC.	2D	DWG. NO. CMD-E02-1	SHEET 1 OF 1	REV. A.0
DRAWN	bmanernach	8/6/2012								PROJECT:
CHECKED	JDP	08/21/2012	WAS:							