

ROTATING SHAFT GUARDS

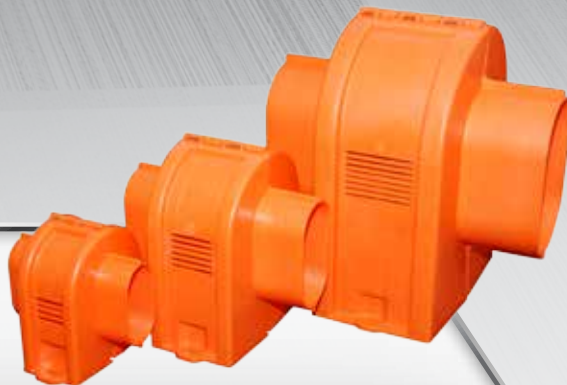
TYPE MCG POLYETHYLENE GUARDS NOW AVAILABLE FROM VIKING PUMP

FEATURES & BENEFITS

- **Close-coupled Coupling Guard**
 - Three sizes available
- **Each Guard Includes:**
 - 2 molded halves assembled with a 304/A2 SS pin
 - 4 optional snap-fit end cap halves
 - 2 fender washers 304/A2 SS
 - Insulation manual
- **Construction:**
 - Durable and ideal for harsh environments
 - -40°F to +170°F (-40°C to +77°C)
 - High impact polyethylene
 - Stainless steel hardware
 - Radial vents
 - Optional risers available (sold separately)
 - Stainless steel hardware
- **Safety:**
 - Comply with OSHA, ASME and ANSI standards
 - These guards are molded safety orange
 - Non-sparking
 - Molded ANSI warning labels
- **Ease of Installation:**
 - Measure using trim lines, cut and fit hardware
 - Saves installation time and expense
- **Low Cost Installation:**
 - Less expensive than custom designed guards
- **Easy Coupling Access:**
 - Guards are hinged at the top allowing easy access to coupling for inspection or maintenance

NOTE: For selecting the proper guard, refer to Catalog Section 605.

**3 SIZES
AVAILABLE:**



05

15

25



VIKING PUMP

A Unit of IDEX Corporation