



**TRA®10 SERIES™** BY WRIGHT FLOW TECHNOLOGIES  
**CIRCUMFERENTIAL PISTON PUMP | HYGIENIC PRODUCT LINE**



## FEATURES & BENEFITS

### CLEANABILITY

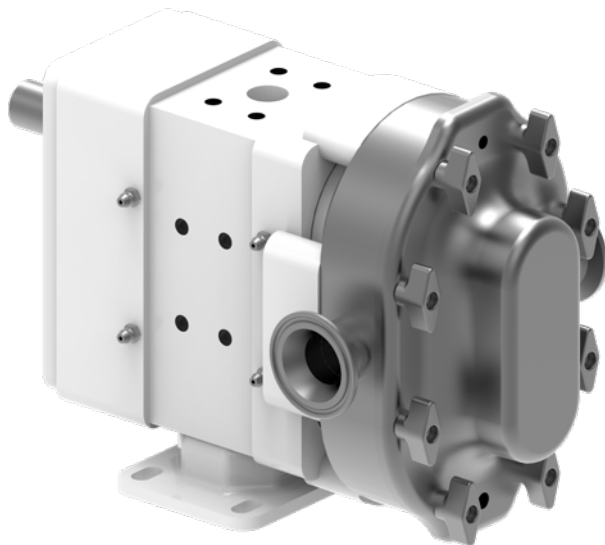
- Easy disassembly for easy COP (Clean Out of Place)
- Designed to 3A standards

### PERFORMANCE

- Efficient handling for low & high viscosity applications
- Exclusive, non-galling WFT 808® alloy rotors standard; permits running at tighter clearances
- High strength 17-4 PH single piece shaft standard on 0300 and larger
- Helical gears, improving load carrying capabilities

### EASE OF MAINTENANCE

- Drop-in-place with TRA®20 & comparable manufacturer models
- Interchangeable service parts with comparable manufacturer models
- Easy disassembly



## PERFORMANCE

### MODELS

Model	Displacement		Max Pressure		Max Speed	Standard Ports		Max Capacity	
	USG/rev.	l/rev.	PSI	BAR	RPM	In	mm	GPM	m³/h
0060	0.008	0.03	200	14	800	1.5	38	6	1.3
0150	0.014	0.052	200	14	700	1.5	38	9	2
0180	0.03	0.11	200	14	600	1.5	38	17	3.8
0300	0.06	0.23	200	14	600	1.5	38	36	8.2
0450	0.1	0.38	400	27	600	2	51	59	13.3
0600	0.15	0.58	200	14	600	2.5	64	90	20.4
1300	0.25	0.96	200	14	600	3	76	150	34.1
2200	0.52	1.98	200	14	600	4	102	310	70.4
3200	0.75	2.85	200	14	600	6	152	450	102

### RECTANGULAR FLANGE MODELS

Model	Displacement		Max Pressure		Max Speed	Inlet (WxL)		Outlet		Max Capacity	
	USG/rev.	l/rev.	PSI	BAR	RPM	In	mm	In	mm	GPM	m³/h
0340	0.06	0.22	200	14	400	1.75 x 6.75	44.50 x 171.45	2	50.8	24	5.4
0640	0.15	0.57	200	14	400	2.24 x 8.82	56.90 x 224.03	2.5	57.2	60	13.6
1340	0.25	0.96	200	14	400	2.97 x 9.25	75.44 x 234.95	3	76.2	100	22.7
2240	0.52	1.97	200	14	400	3.87 x 11.00	98.30 x 279.40	4	101.6	200	45.4



**CAPACITY**  
to 450 GPM  
(102 m³/h)



**PRESSURE**  
to 400 PSI  
(27 BAR)



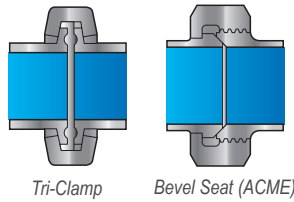
**VISCOSITY**  
to 910,000 SSU  
(200,000 cSt)



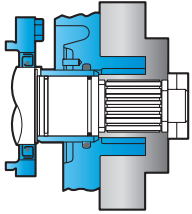
**TEMPERATURE**  
to +300°F  
(+150°C)

## PORTING

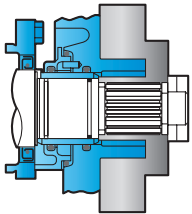
- Complete range of hygienic clamp, screw, flange & industrial screw connections
- Tri-clamp, flanged, DIN, IMDA, NPT, BSP, etc.



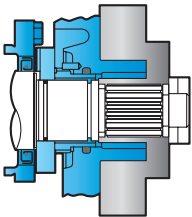
## SEALING



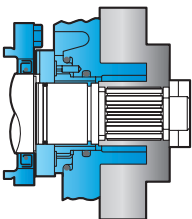
- Single O-ring
  - Standard O-rings & Cover Seals: *Buna/FDA*
  - Optional O-rings & Cover Seals: *FKM, EPDM, Silicone*



- Double O-ring with Flush
  - Standard O-rings & Cover Seals: *Buna/FDA*
  - Optional O-rings & Cover Seals: *FKM, EPDM, Silicone*



- Single Mechanical
  - Standard Seal Faces: *SiC/SiC*
  - Standard O-rings & Cover Seals: *Buna/FDA*
  - Optional Faces: *Carbon, Ceramic or Chrome Oxide*
  - Optional O-rings & Cover Seals: *FKM, EPDM, Silicone*



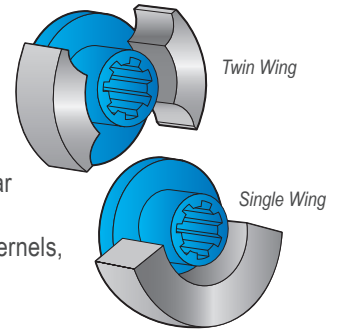
- Double Mechanical with Flush
  - Standard Seal Faces: *SiC/SiC/C*
  - Standard O-rings & Cover Seals: *Buna/FDA*
  - Optional Faces: *Carbon, Ceramic or Chrome Oxide*
  - Optional O-rings & Cover Seals: *FKM, EPDM, Silicone*

## GEAR BOX

- Powder-coated standard
- 304 stainless steel optional

## ROTOR & CASING OPTIONS

- 316 stainless steel pump casing standard w/ interior finished to 3-A standards
- Non-galling WFT 808® nickel alloy rotors standard or 316 stainless steel rotors optional
- Optional clearances: front face, hot, high temperature/high viscosity (chocolate)
- Twin Wing Rotors Standard
  - Suitable for all liquids, provides minimum pulsation
- Single Wing Rotors Optional
  - Standard Provides reduced shear on shear sensitive fluids or large solids such as fruit pieces, nut kernels, cheese curds or meats



## MOUNTING

- A gear case that can be mounted in any of four positions allows for horizontal or vertical porting, flexibility in drive shaft positioning to match reducer or gear motor input & improved access to grease fittings

## TYPICAL APPLICATIONS

- Dairy
- Bakery
- Meat Processing
- Foods
- Confectionary
- Paints
- Chemical

## WHY REMANUFACTURE?

- Worn pump is returned to **like-new condition & performance**
- Your remanufactured pump carries a **full 1 year factory warranty**
- All remanufactured pumps are **tested & certified**
- Save big** compared to purchasing an entirely new pump
- Pumps can be remanufactured **up to four times**, depending on model & wear

# VIKING PUMP®

VIKING PUMP, INC.  
A Unit of IDEX Corporation  
406 State Street  
Cedar Falls, Iowa 50613 U.S.A.  
[vikingpump.com](http://vikingpump.com)

**CONTACT YOUR STOCKING DISTRIBUTOR TODAY**