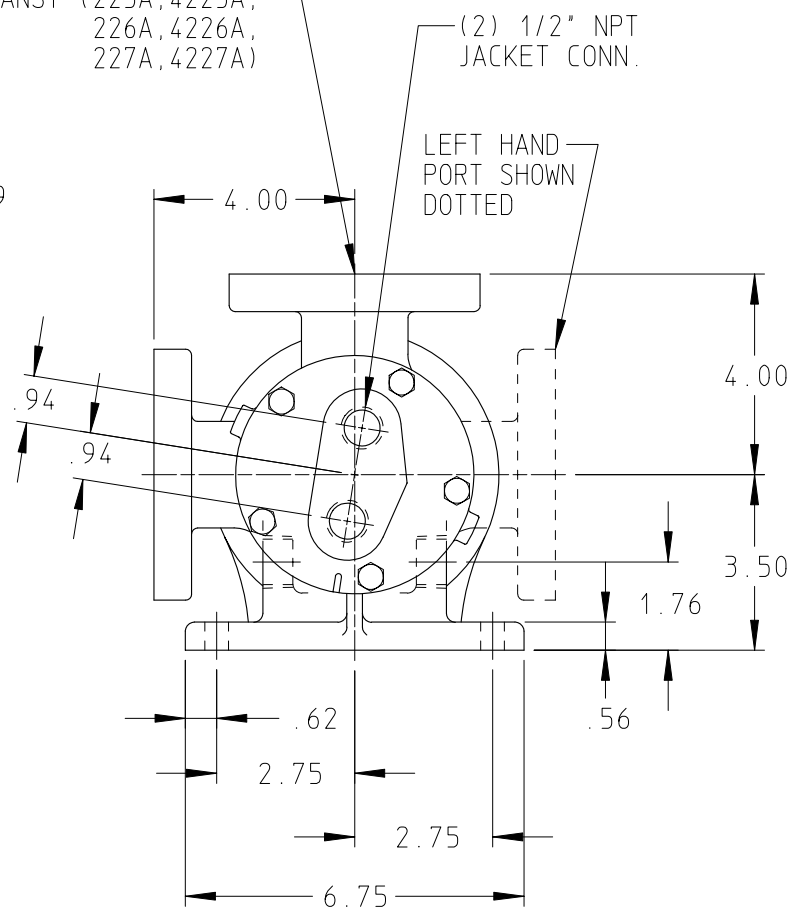
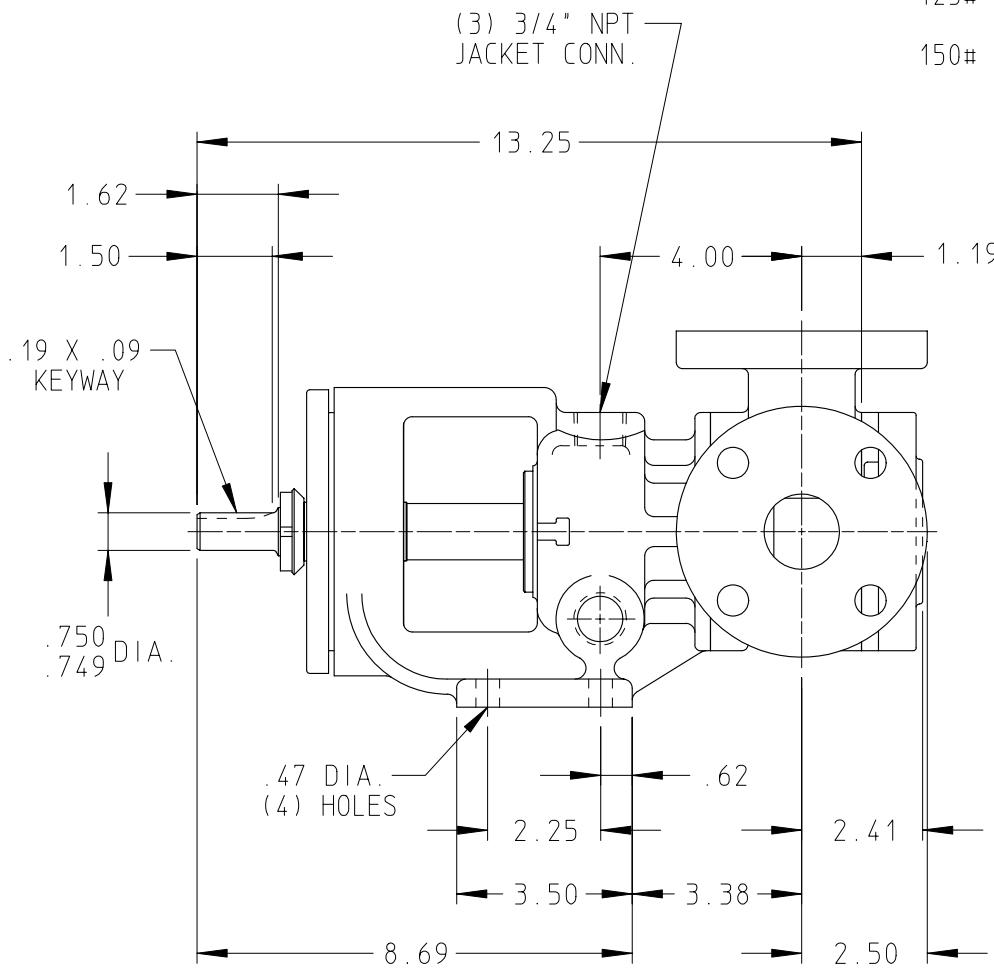


DRAWING NO.
HV-3282

PORTS: 1-1/2" FLANGES
SUITABLE FOR USE WITH
125# ANSI (224A, 4224A,
4224B)
150# ANSI (223A, 4223A,
226A, 4226A,
227A, 4227A)



STANDARD MODELS: H223A, H4223A, HL223A, HL4223A, H227A, H4227A, HL227A, HL4227A
 MODELS WITH OPTIONAL FLANGED PORTS: H224A, H4224A, H4224B, HL224A, HL4224A, HL4224B, H226A, H4226A, HL226A, HL4226A

DRAWN DANN DATE 18 DEC 1997
 CHECKED DC DATE 18 DEC 1997

THIS DRAWING IS THE PROPERTY OF VIKING PUMP INC. AND IS PROPRIETARY IN GENERAL AND DETAIL. IT SHALL NOT BE COPIED OR ITS CONTENTS REVEALED TO OUTSIDE PARTIES WITHOUT THE WRITTEN CONSENT OF VIKING PUMP INC.

VIKING PUMP
 VIKING PUMP, INC.
 A Unit of IDEX Corporation
 Cedar Falls, Iowa 50613
 U.S.A.

DRAWING NO.
HV-3282

REV. D
 26 SEP 2003