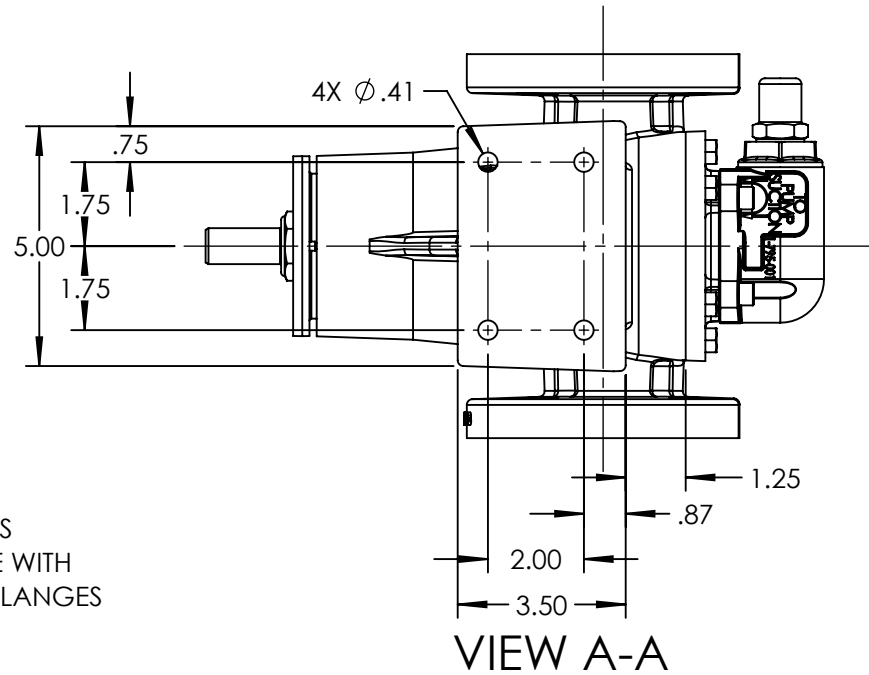
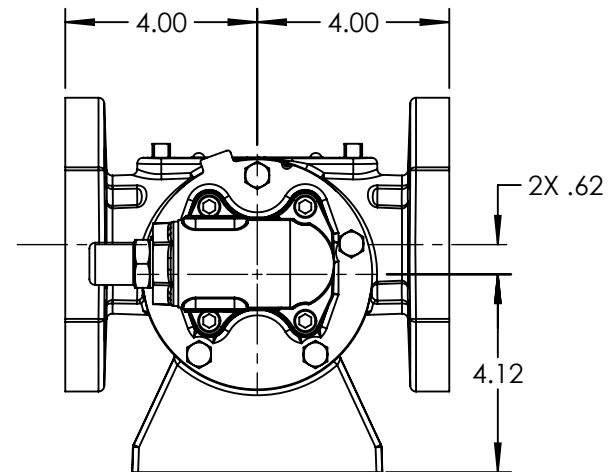
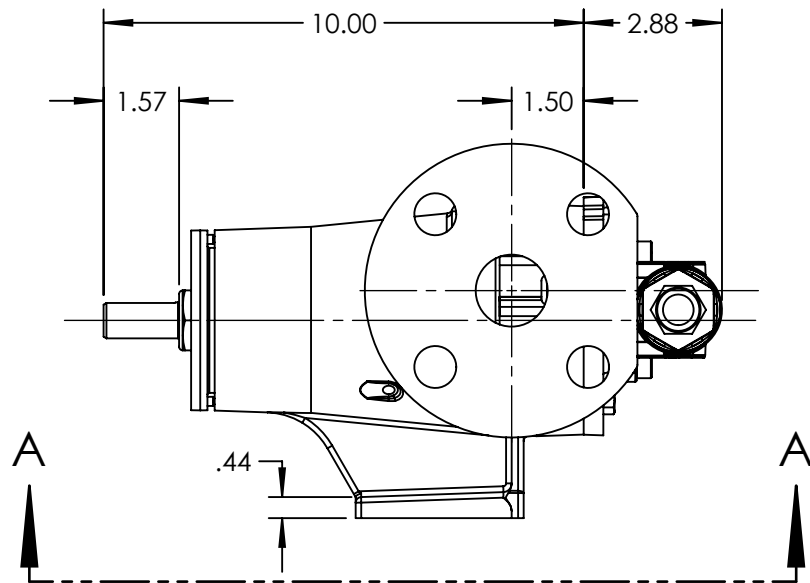


PORTS: 2X 1-1/2" FLANGES
SUITABLE FOR USE WITH
CLASS 300 ANSI FLANGES



VIEW A-A



NOTES:
1. ALL DIMENSIONS ARE FOR REFERENCE ONLY.

STANDARD MODELS: HJ4193, HL4193

STATE	Released	09/28/2018
DRAWN	DJaramillo	09/28/2018
CHECKED	BAM	09/28/2018

DIMENSIONS ARE IN INCHES	
PROJECT:	
WAS:	



VIKING PUMP, INC.
A Unit of IDEX Corporation
Cedar Falls, IA 50613
U.S.A.

THIS DRAWING IS THE PROPERTY OF VIKING PUMP, INC. AND IS PROPRIETARY IN GENERAL AND DETAIL. IT SHALL NOT BE COPIED OR ITS CONTENTS REVEALED TO OUTSIDE PARTIES WITHOUT THE WRITTEN CONSENT OF VIKING PUMP, INC.

3D

DWG. NO.
HV-3495

SHEET 1 OF 1

REV. C.0

09/28/2018