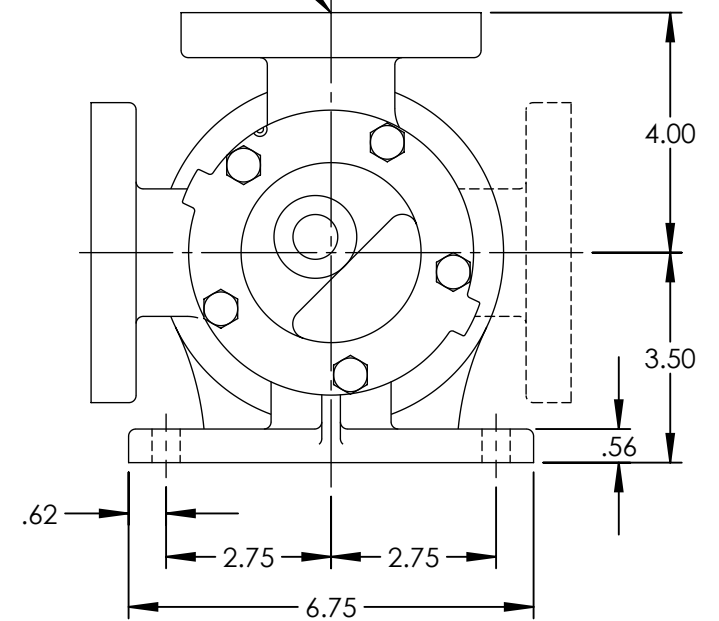


PORTS: 1-1/2" FLANGES
 SUITABLE FOR USE WITH
 CLASS 125 ANSI FLANGES (124A, 4124A,
 126A, 4126A,
 4124B)
 CLASS 150 ANSI FLANGES (123A, 4123A,
 127A, 4127A)



STANDARD MODELS: H123A, H4123A, HL123A, HL4123A, H127A, H4127A, HL127A, HL4127A
 MODELS WITH OPTIONAL FLANGED PORTS: H124A, H4124A, HL124A, HL4124A, H126A, H4126A, HL126A, HL4126A, H4124B, HL4124B

STATE	Released	06/16/2011	DIMENSIONS ARE IN INCHES	VIKING PUMP	VIKING PUMP, INC. A Unit of IDEX Corporation Cedar Falls, IA 50613 U.S.A.	THIS DRAWING IS THE PROPERTY OF VIKING PUMP, INC. AND IS PROPRIETARY IN GENERAL AND DETAIL. IT SHALL NOT BE COPIED OR ITS CONTENTS REVEALED TO OUTSIDE PARTIES WITHOUT THE WRITTEN CONSENT OF VIKING PUMP, INC.	2D	DWG. NO. HV-3736	SHEET 1 OF 1	REV. B.0	
DRAWN	sjakel	06/09/2011								PROJECT:	06/16/2011
CHECKED	JAG	06/15/2011								WAS:	