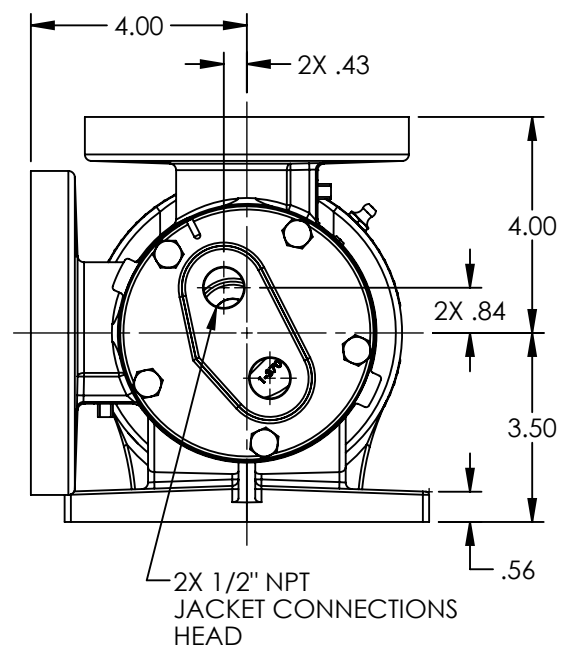


PORTS: 2X 2" FLANGES  
DRILLED AND TAPPED  
SUITABLE FOR USE WITH  
CLASS 125 ANSI FLANGES



NOTES:  
1. ALL DIMENSIONS ARE FOR REFERENCE ONLY.

MODELS: H224A-CHC1, HL224A-CHC1, H224A-CHC2, HL224A-CHC2

STATE	Released	07/19/2018
DRAWN	sjakel	07/13/2018
CHECKED	CJM	07/19/2018

DIMENSIONS ARE IN  
INCHES

PROJECT: E248

WAS:



VIKING PUMP, INC.  
A Unit of IDEX Corporation  
Cedar Falls, IA 50613  
U.S.A.

THIS DRAWING IS THE PROPERTY OF  
VIKING PUMP, INC. AND IS PROPRIETARY  
IN GENERAL AND DETAIL. IT SHALL NOT BE  
COPIED OR ITS CONTENTS REVEALED TO  
OUTSIDE PARTIES WITHOUT THE WRITTEN  
CONSENT OF VIKING PUMP, INC.

3D

DWG. NO.  
HV-4063

SHEET 1 OF 1

REV. A.0  
07/19/2018