

.25 X .12 KEYWAY

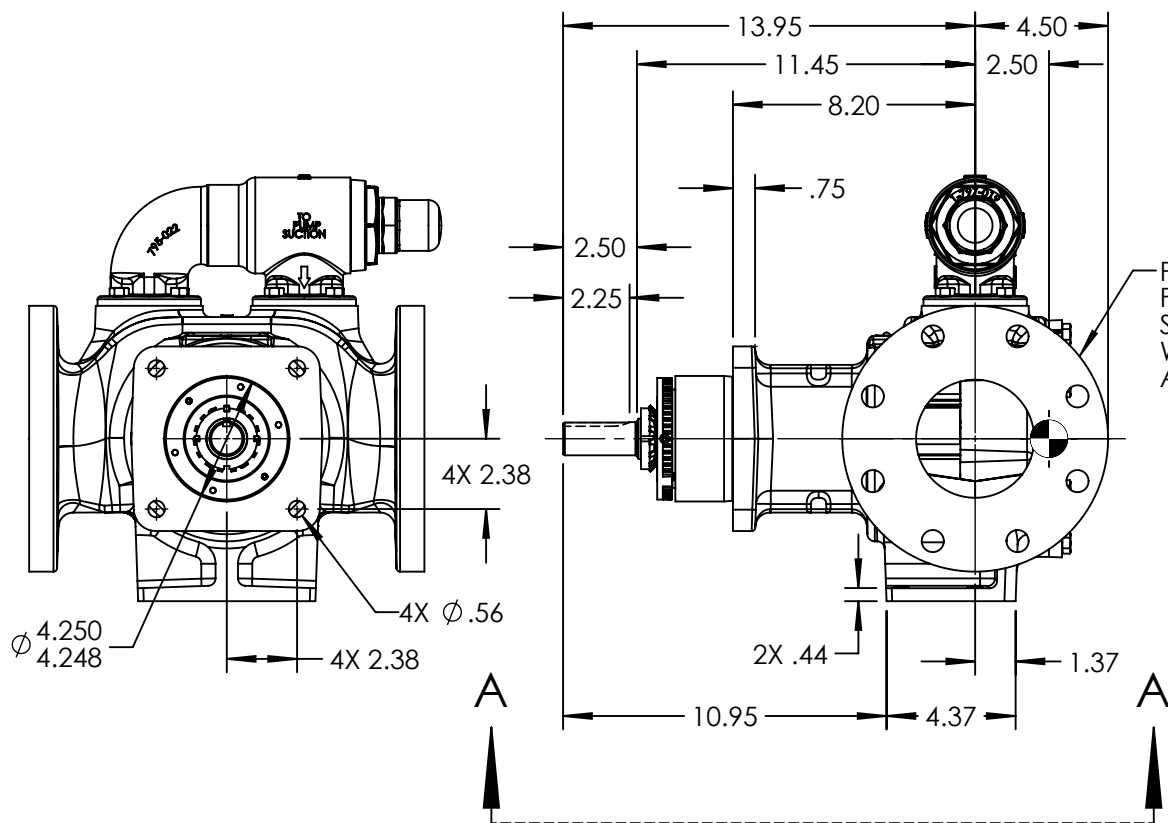
Ø 1.125
1.123

2X 2.50
2X 2.50

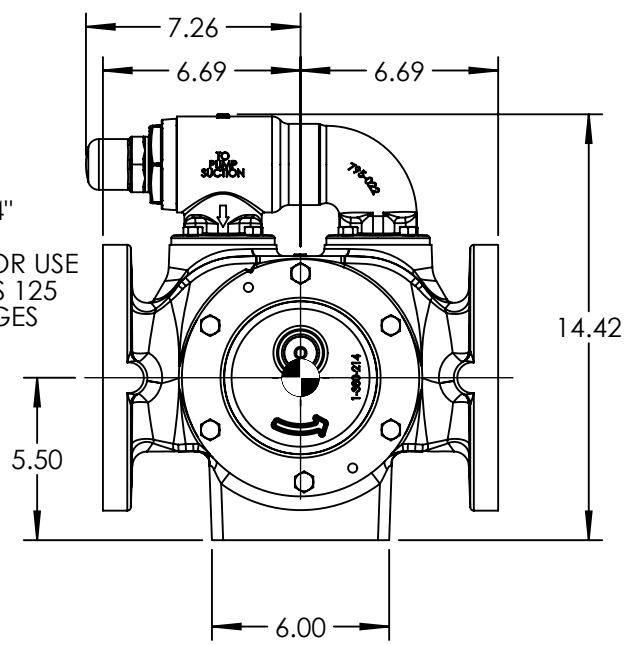
4X Ø .53

VIEW A-A

2X 2.50



PORTS: 2X 4" FLANGES SUITABLE FOR USE WITH CLASS 125 ANSI FLANGES



STANDARD MODELS: KE4195, KKE4195

NOTES:
1. ALL DIMENSIONS ARE FOR REFERENCE ONLY.

STATE	Released	03/19/2015
DRAWN	cmihm	12/16/2014
CHECKED	BAM	03/19/2015

DIMENSIONS ARE IN INCHES	
PROJECT:	E151
WAS:	EX-E151-28



VIKING PUMP, INC.
A Unit of IDEX Corporation
Cedar Falls, IA 50613
U.S.A.

THIS DRAWING IS THE PROPERTY OF VIKING PUMP, INC. AND IS PROPRIETARY IN GENERAL AND DETAIL. IT SHALL NOT BE COPIED OR ITS CONTENTS REVEALED TO OUTSIDE PARTIES WITHOUT THE WRITTEN CONSENT OF VIKING PUMP, INC.

3D

DWG. NO.
KVE-14

SHEET 1 OF 1

REV. A.0

03/19/2015