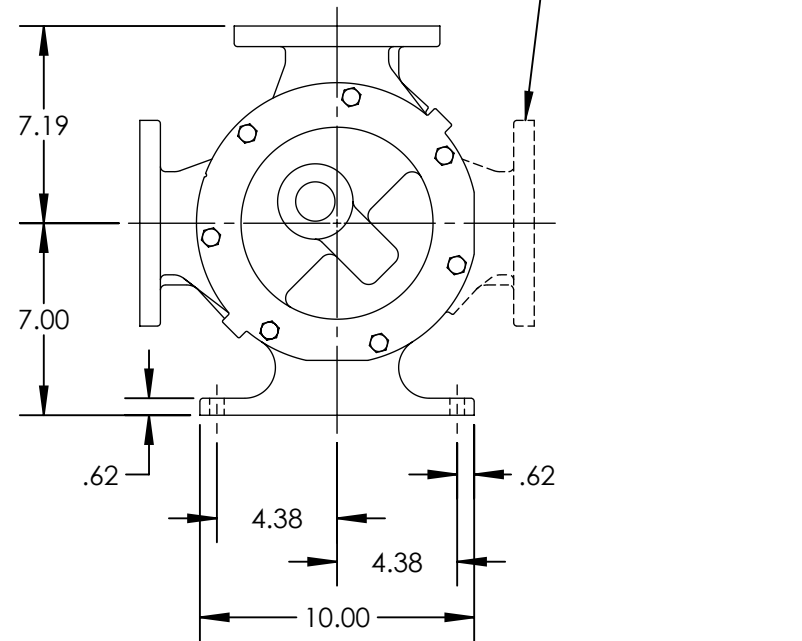
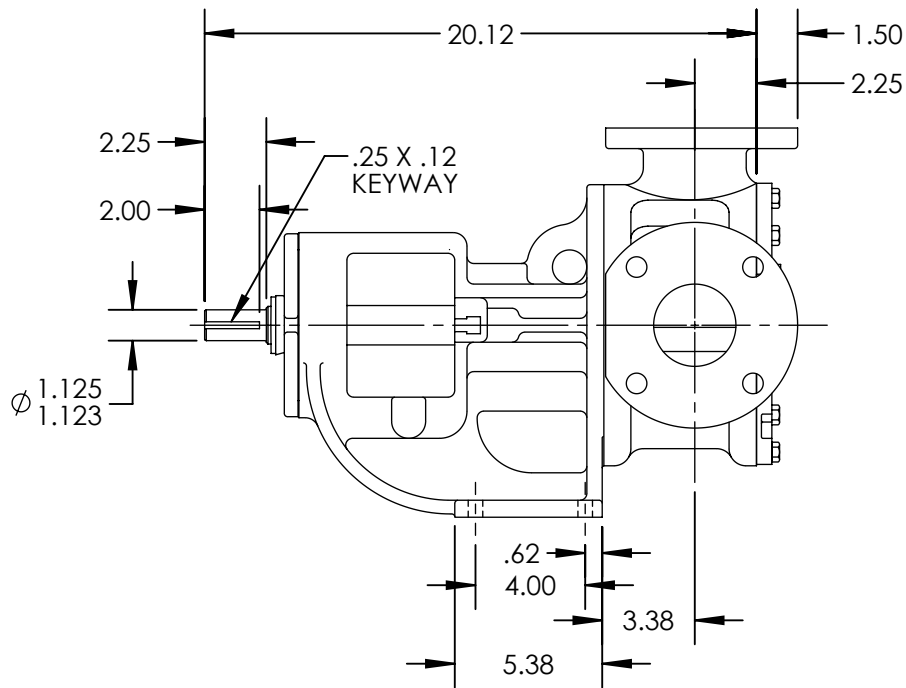


PORTS: 2X 3" FLANGES  
 SUITABLE FOR USE WITH  
 CLASS 125 ANSI FLANGES (124A, 4124A)  
 CLASS 150 ANSI FLANGES (123A, 4123A, 127A,  
 4127A, 126A, 4126A)



STANDARD MODELS: LL124A, LL4124A, LL123A, LL4123A, LL127A, LL4127A, LL126A, LL4126A

STATE	Released	05/03/2012	DIMENSIONS ARE IN INCHES	<b>VIKING PUMP</b>	VIKING PUMP, INC. A Unit of IDEX Corporation Cedar Falls, IA 50613 U.S.A.	THIS DRAWING IS THE PROPERTY OF VIKING PUMP, INC. AND IS PROPRIETARY IN GENERAL AND DETAIL. IT SHALL NOT BE COPIED OR ITS CONTENTS REVEALED TO OUTSIDE PARTIES WITHOUT THE WRITTEN CONSENT OF VIKING PUMP, INC.	2D	DWG. NO. LV-3770	SHEET 1 OF 1	REV. B.0
DRAWN	rmcelligott	5/2/2012								PROJECT:
CHECKED	BAM	05/02/2012	WAS:							