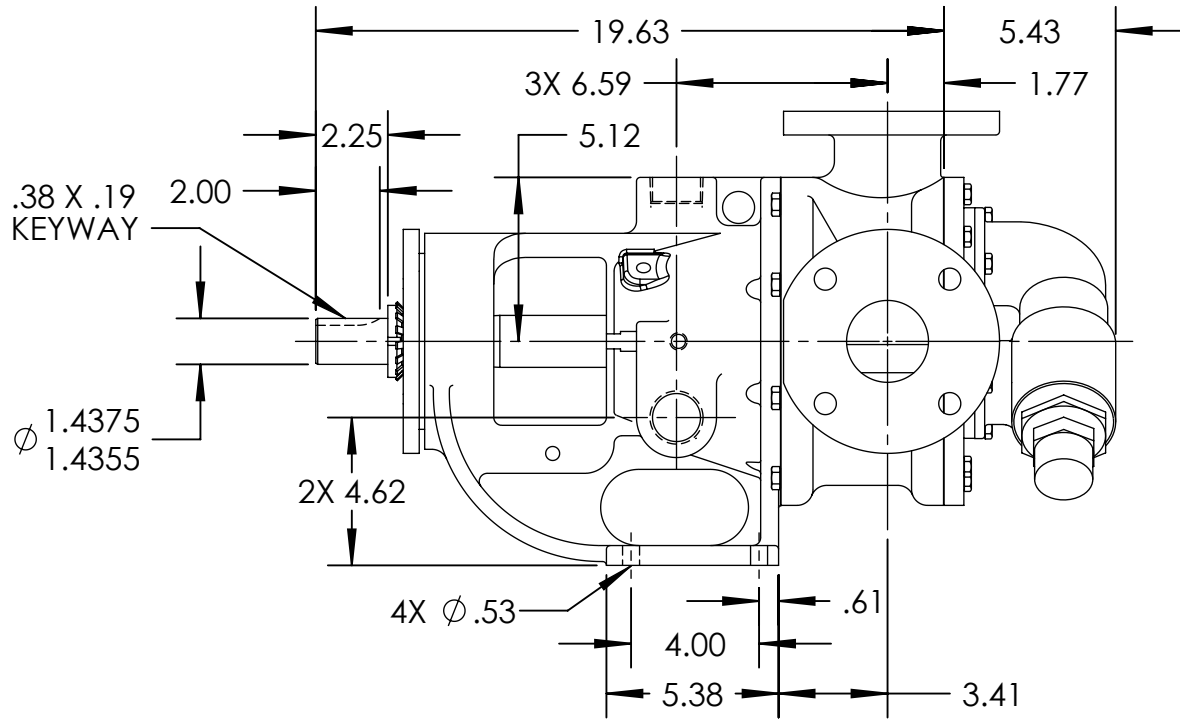
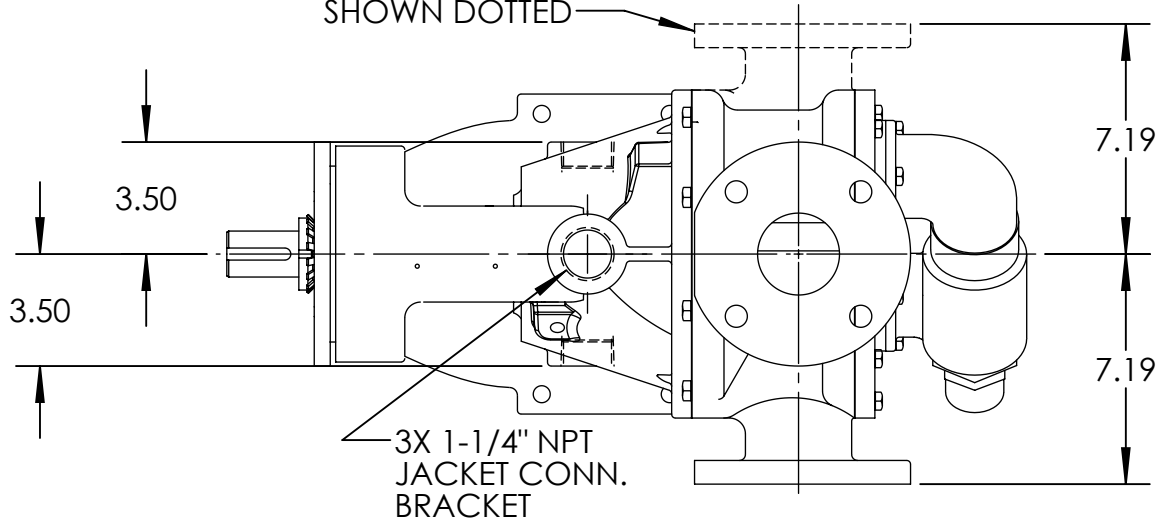
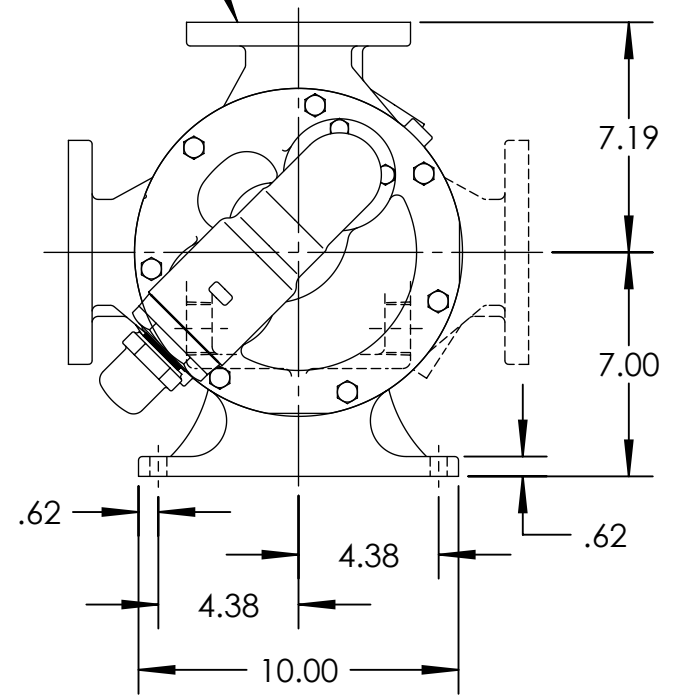


LEFT HAND PORT
SHOWN DOTTED



PORTS: 2X 2-1/2" FLANGES
SUITABLE FOR USE WITH
CLASS 125 ANSI FLANGES



STANDARD MODELS: LQ224AE, LQ4224AE, LQ4224B

STATE	Released	08/10/2010
DRAWN	Imason	08/03/2010
CHECKED	SJJ	08/09/2010

DIMENSIONS ARE IN
INCHES

PROJECT:

WAS:



VIKING PUMP, INC.
A Unit of IDEX Corporation
Cedar Falls, IA 50613
U.S.A.

THIS DRAWING IS THE PROPERTY OF
VIKING PUMP, INC. AND IS PROPRIETARY
IN GENERAL AND DETAIL. IT SHALL NOT BE
COPIED OR ITS CONTENTS REVEALED TO
OUTSIDE PARTIES WITHOUT THE WRITTEN
CONSENT OF VIKING PUMP, INC.

2D

DWG. NO.
LV-4113

SHEET 1 OF 1

REV. A.0

08/10/2010