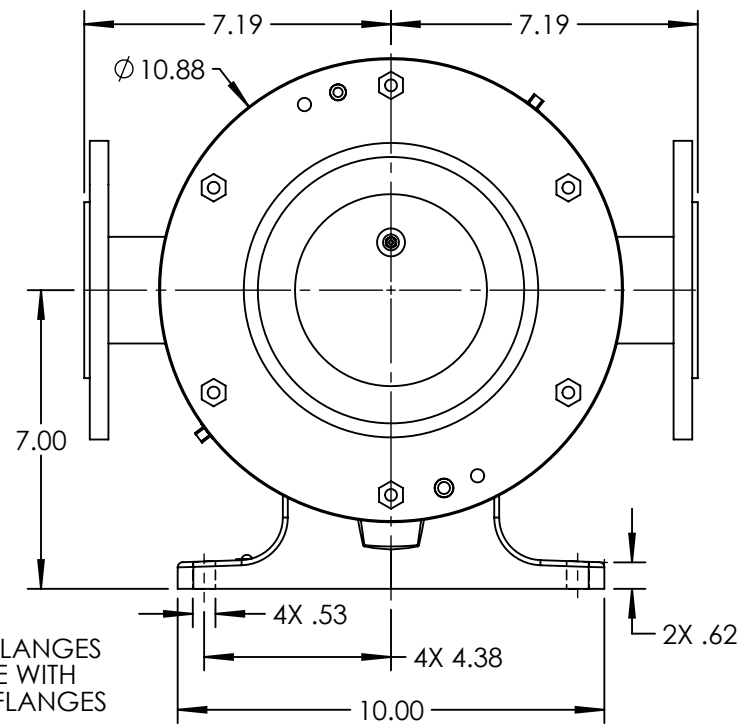
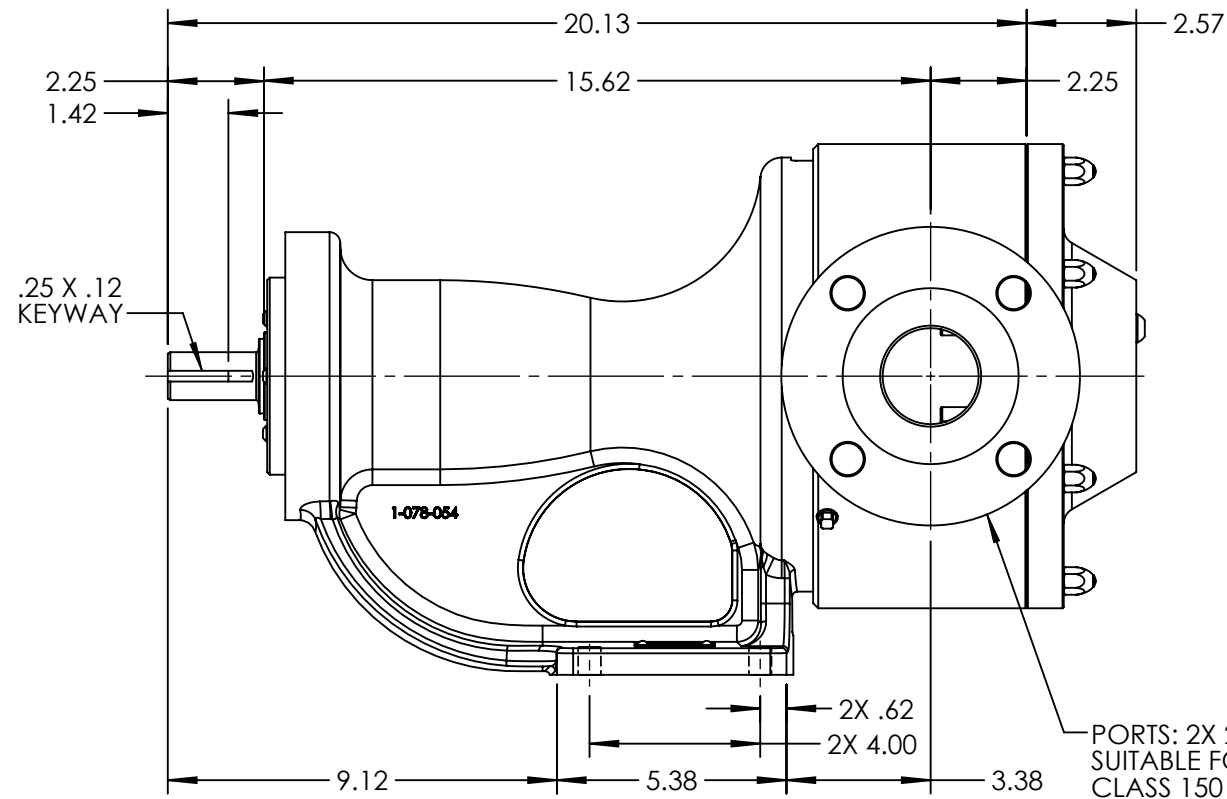


HORIZONTAL PORT ORIENTATION

VERTICAL PORT ORIENTATION
NOT POSSIBLE WITH 2.50" ANSI FLANGES



PORTS: 2X 2.50" FLANGES
SUITABLE FOR USE WITH
CLASS 150 ANSI FLANGES

STANDARD MODELS: LQ4157B, LQ157B

NOTES:
1. ALL DIMENSIONS ARE FOR REFERENCE ONLY.

STATE	Released	06/04/2014	DIMENSIONS ARE IN INCHES
DRAWN	tdutcher	6/2/2014	PROJECT: D923
CHECKED	JAD	06/04/2014	WAS:



VIKING PUMP, INC.
A Unit of IDEX Corporation
Cedar Falls, IA 50613
U.S.A.

THIS DRAWING IS THE PROPERTY OF
VIKING PUMP, INC. AND IS PROPRIETARY
IN GENERAL AND DETAIL. IT SHALL NOT BE
COPIED OR ITS CONTENTS REVEALED TO
OUTSIDE PARTIES WITHOUT THE WRITTEN
CONSENT OF VIKING PUMP, INC.

3D

DWG. NO.
LV-4237

SHEET 1 OF 1 REV. A.0

06/04/2014