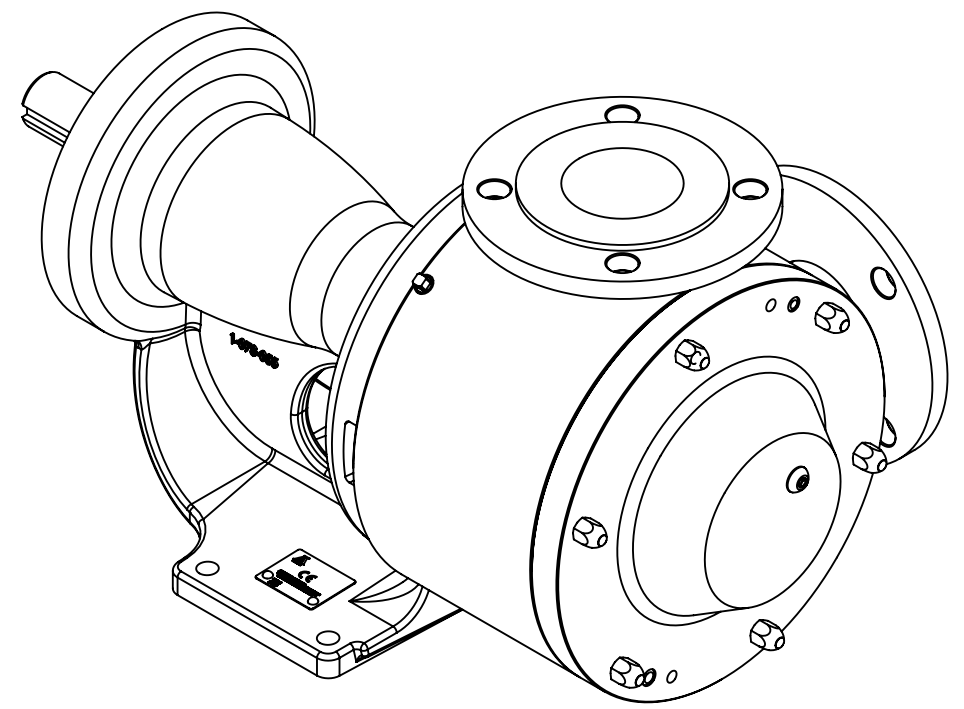
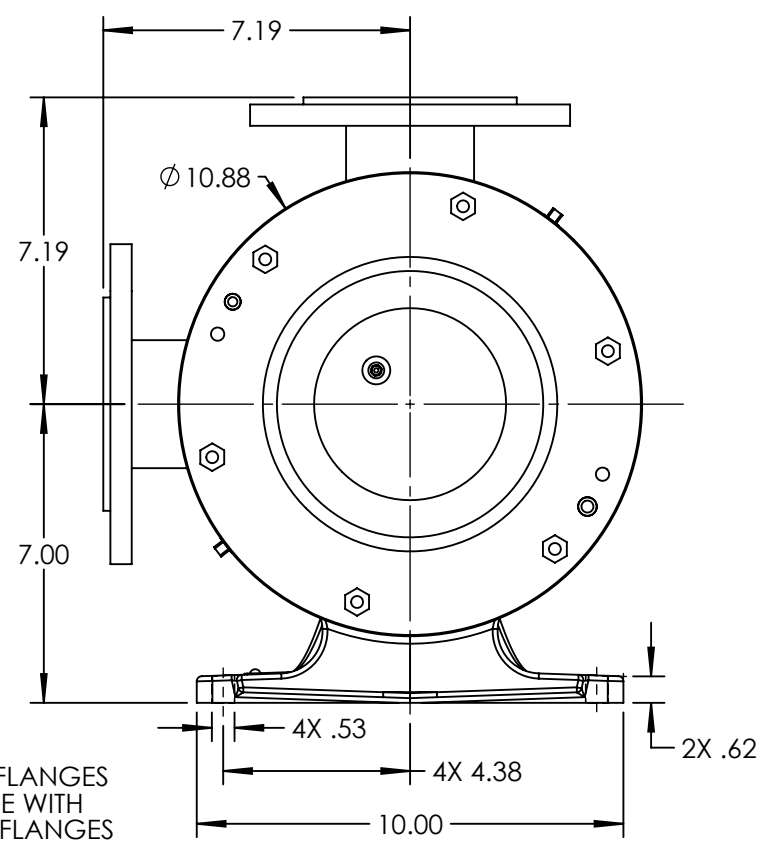
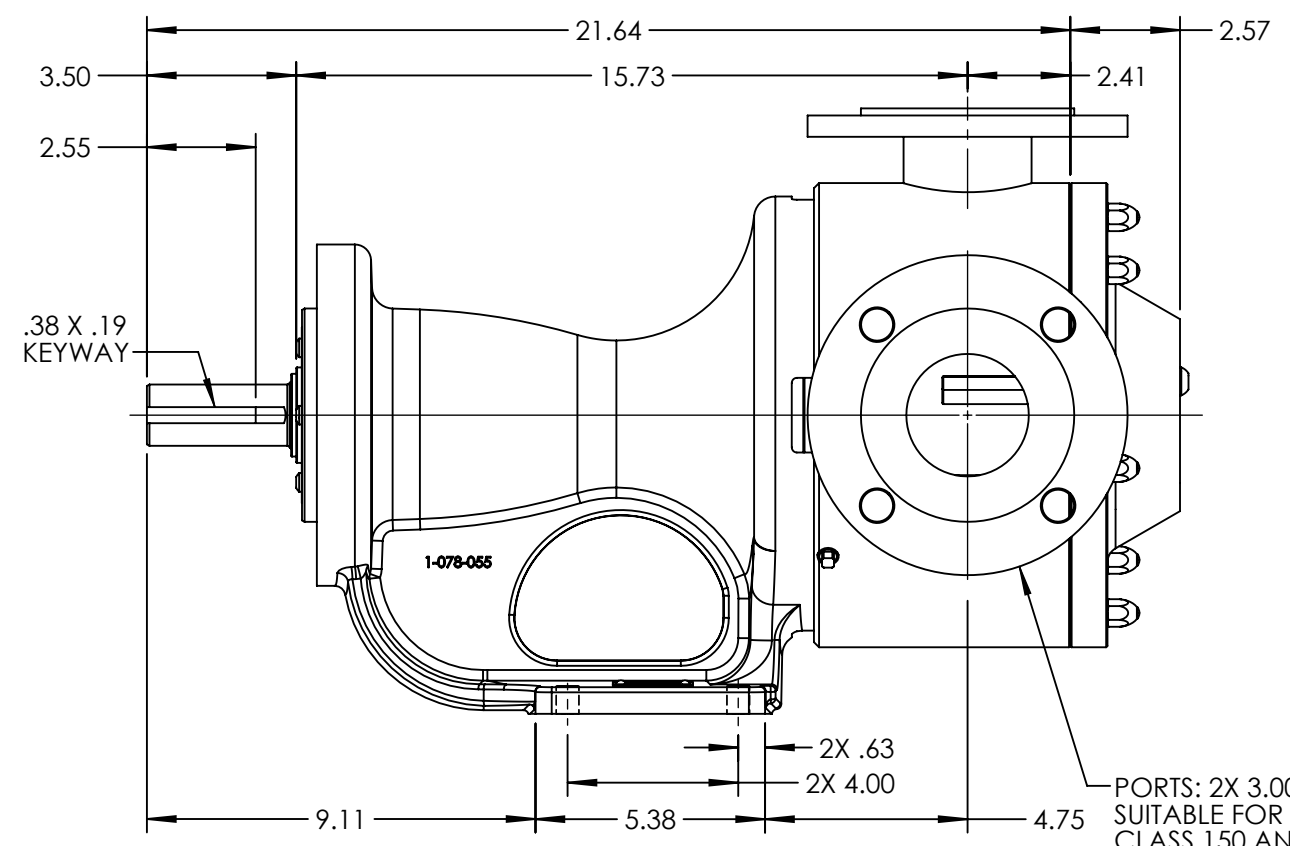


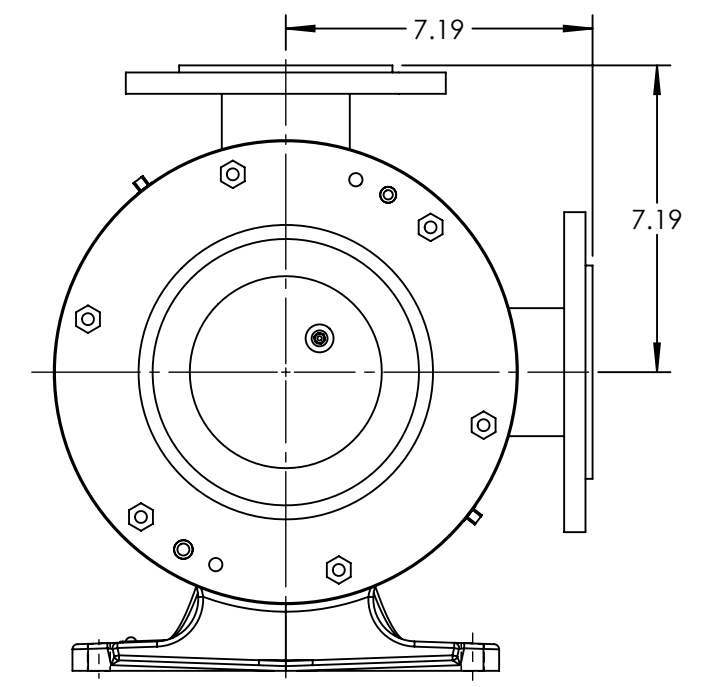
RIGHT HAND PORT ORIENTATION



LEFT HAND PORT ORIENTATION



PORTS: 2X 3.00" FLANGES
SUITABLE FOR USE WITH
CLASS 150 ANSI FLANGES



LEFT HAND PORT ORIENTATION

NOTES:
1. ALL DIMENSIONS ARE FOR REFERENCE ONLY.

STANDARD MODELS: LS4157B, LS157B

STATE	Released	06/04/2014	DIMENSIONS ARE IN INCHES
DRAWN	tdutcher	6/4/2014	PROJECT: D923
CHECKED	JAD	06/04/2014	WAS:



VIKING PUMP, INC.
A Unit of IDEX Corporation
Cedar Falls, IA 50613
U.S.A.

THIS DRAWING IS THE PROPERTY OF VIKING PUMP, INC. AND IS PROPRIETARY IN GENERAL AND DETAIL. IT SHALL NOT BE COPIED OR ITS CONTENTS REVEALED TO OUTSIDE PARTIES WITHOUT THE WRITTEN CONSENT OF VIKING PUMP, INC.

3D

DWG. NO.
LV-4246

SHEET 1 OF 1

REV. A.0

06/04/2014