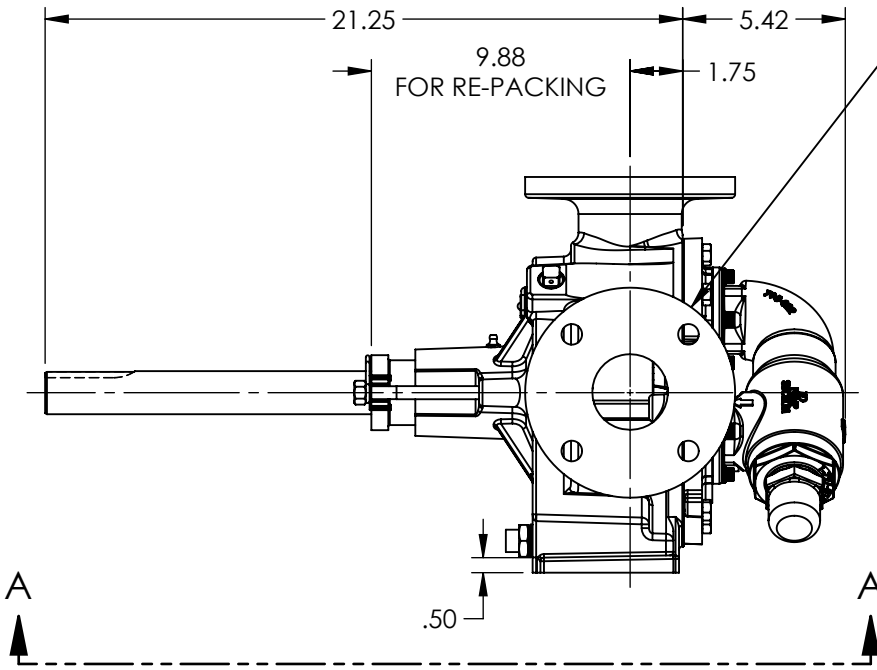
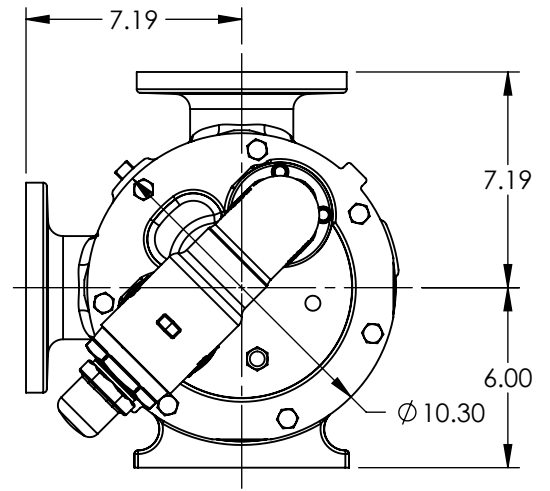


VIEW A-A



PORTS: 2X 2-1/2" FLANGES  
SUITABLE FOR USE WITH  
CLASS 125 ANSI FLANGES



STANDARD MODEL: LQ32E

NOTES:  
1. ALL DIMENSIONS ARE FOR REFERENCE ONLY.  
2. HEATER CONDUIT HIDDEN FOR CLARITY.

STATE	Released	08/09/2018
DRAWN	sbaldwin	01/15/2015
CHECKED	BAM	08/07/2018

DIMENSIONS ARE IN INCHES	
PROJECT:	E121
WAS:	EX-E121-2



VIKING PUMP, INC.  
A Unit of IDEX Corporation  
Cedar Falls, IA 50613  
U.S.A.

THIS DRAWING IS THE PROPERTY OF VIKING PUMP, INC. AND IS PROPRIETARY IN GENERAL AND DETAIL. IT SHALL NOT BE COPIED OR ITS CONTENTS REVEALED TO OUTSIDE PARTIES WITHOUT THE WRITTEN CONSENT OF VIKING PUMP, INC.

3D

DWG. NO.  
LV-4268

SHEET 1 OF 1

REV. B.0  
08/09/2018