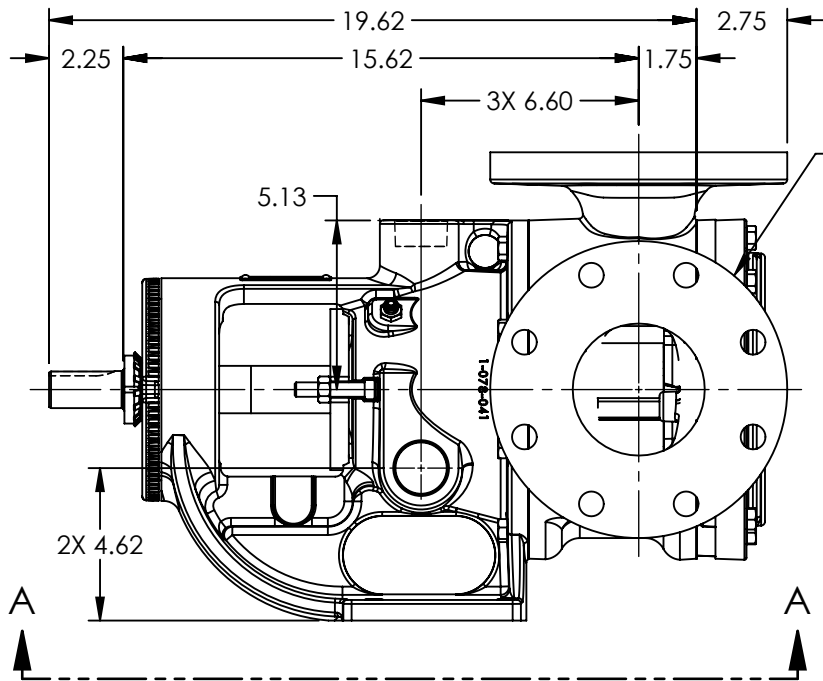
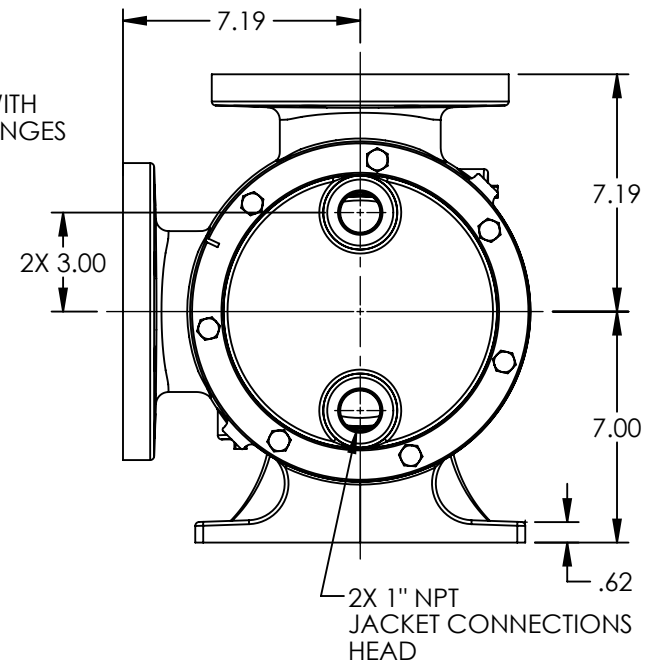


VIEW A-A



PORTS: 2X 4" FLANGES
SUITABLE FOR USE WITH
CLASS 125 ANSI FLANGES



MODELS: LQ224A-CHC1, LQ224A-CHC2

NOTES:
1. ALL DIMENSIONS ARE FOR REFERENCE ONLY.

STATE	Released	07/19/2018
DRAWN	sjakel	07/13/2018
CHECKED	CJM	07/19/2018

DIMENSIONS ARE IN INCHES
PROJECT: E248
WAS:



VIKING PUMP, INC.
A Unit of IDEX Corporation
Cedar Falls, IA 50613
U.S.A.

THIS DRAWING IS THE PROPERTY OF
VIKING PUMP, INC. AND IS PROPRIETARY
IN GENERAL AND DETAIL. IT SHALL NOT BE
COPIED OR ITS CONTENTS REVEALED TO
OUTSIDE PARTIES WITHOUT THE WRITTEN
CONSENT OF VIKING PUMP, INC.

3D

DWG. NO.
LV-4407

SHEET 1 OF 1

REV. A.0

07/19/2018