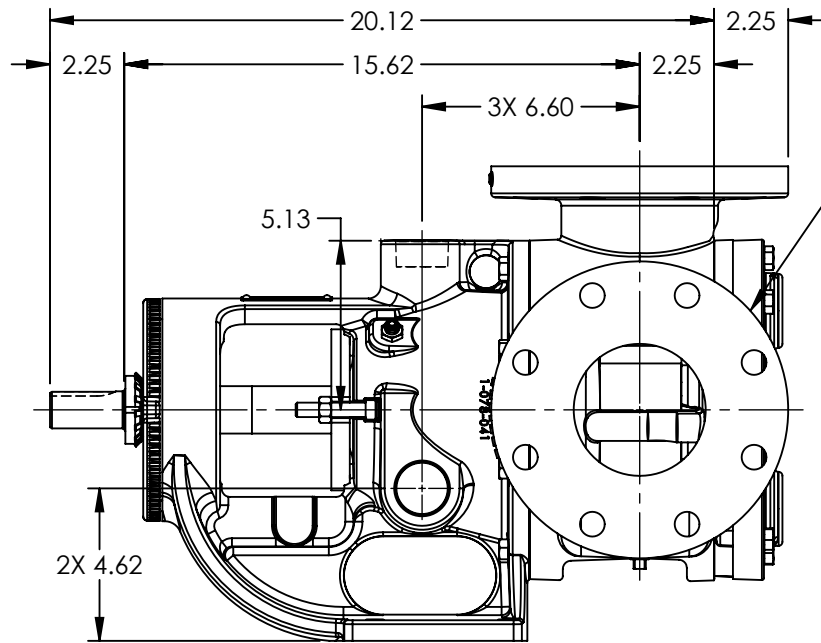
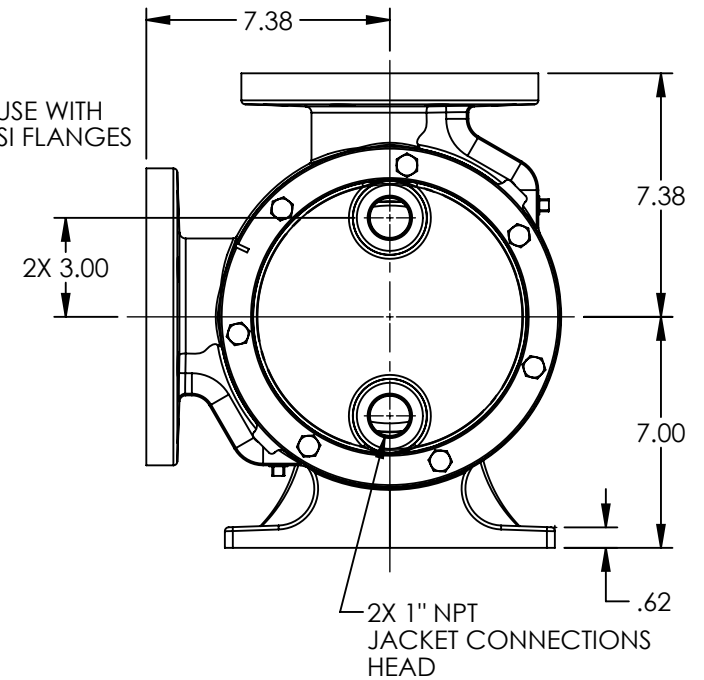


VIEW A-A



PORTS: 2X 4" FLANGES  
SUITABLE FOR USE WITH  
CLASS 125 ANSI FLANGES



NOTES:  
1. ALL DIMENSIONS ARE FOR REFERENCE ONLY.

MODELS: LL224A-CHC1, LL224A-CHC2

|         |          |            |
|---------|----------|------------|
| STATE   | Released | 07/19/2018 |
| DRAWN   | sjakel   | 07/16/2018 |
| CHECKED | CJM      | 07/19/2018 |

|                             |
|-----------------------------|
| DIMENSIONS ARE IN<br>INCHES |
| PROJECT: E248               |
| WAS:                        |



VIKING PUMP, INC.  
A Unit of IDEX Corporation  
Cedar Falls, IA 50613  
U.S.A.

THIS DRAWING IS THE PROPERTY OF  
VIKING PUMP, INC. AND IS PROPRIETARY  
IN GENERAL AND DETAIL. IT SHALL NOT BE  
COPIED OR ITS CONTENTS REVEALED TO  
OUTSIDE PARTIES WITHOUT THE WRITTEN  
CONSENT OF VIKING PUMP, INC.

3D

DWG. NO.  
LV-4409

SHEET 1 OF 1

REV. A.0

07/19/2018