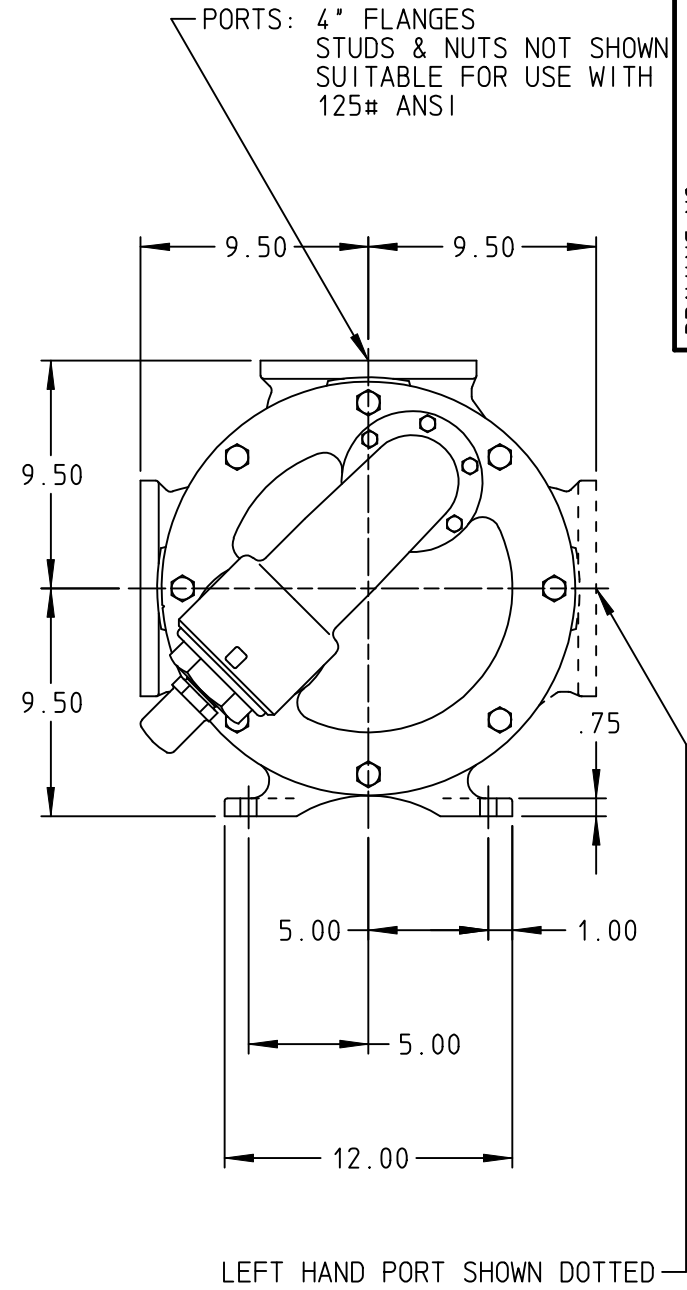
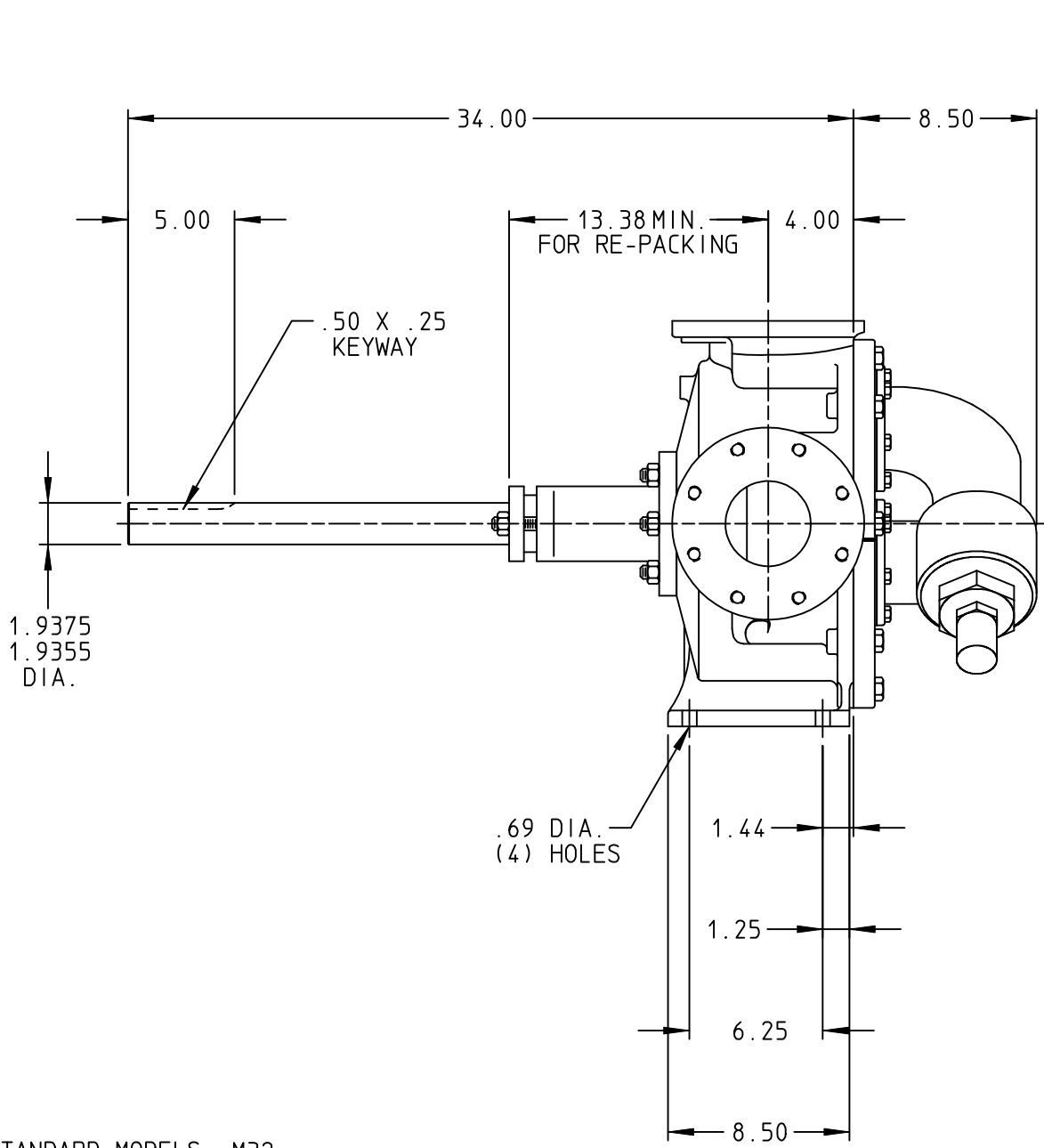


DRAWING NO.
MV-1126



LEFT HAND PORT SHOWN DOTTED

STANDARD MODELS: M32

DRAWN DANN DATE 20 NOV 2000
 CHECKED DC DATE 19 DEC 2000

THIS DRAWING IS THE PROPERTY OF VIKING PUMP
 INC. AND IS PROPRIETARY IN GENERAL AND DETAIL.
 IT SHALL NOT BE COPIED OR ITS CONTENTS
 REVEALED TO OUTSIDE PARTIES WITHOUT THE
 WRITTEN CONSENT OF VIKING PUMP INC.

VIKING PUMP VIKING PUMP, INC.
 A Unit of IDEX Corporation
 Cedar Falls, Iowa 50613
 U.S.A.

DRAWING NO.
MV-1126

REV. A
20 NOV 2000