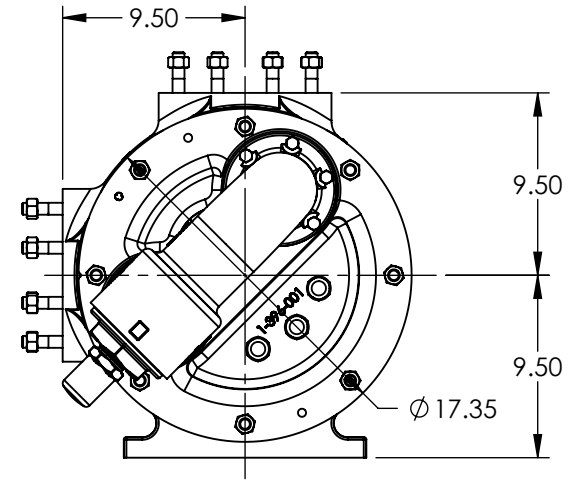
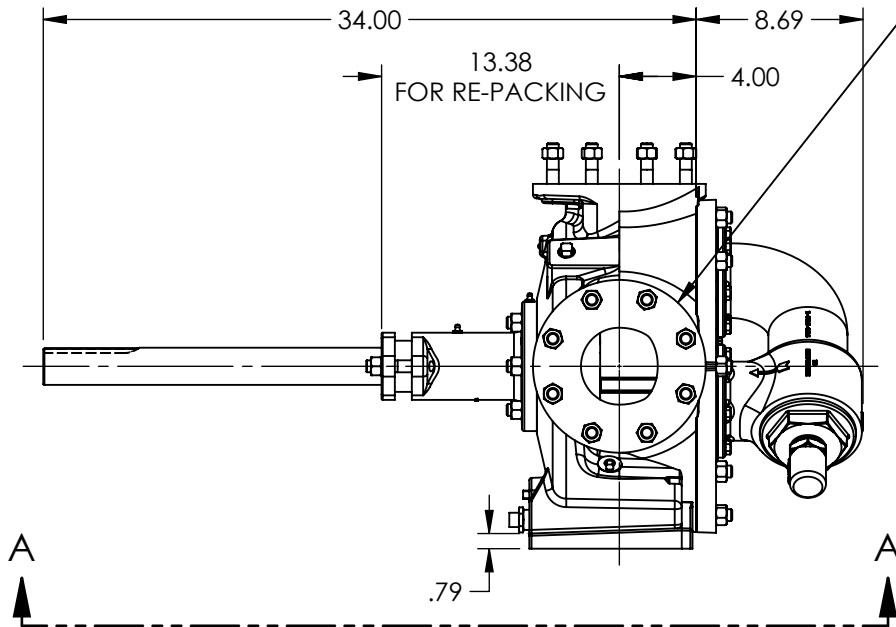


VIEW A-A

PORTS: 2X 4" FLANGES
SUITABLE FOR USE WITH
CLASS 125 ANSI FLANGES



NOTES:
1. ALL DIMENSIONS ARE FOR REFERENCE ONLY.
2. HEATER CONDUIT HIDDEN FOR CLARITY.

STANDARD MODEL: M32E

STATE	Released	08/09/2018
DRAWN	sbaldwin	01/15/2015
CHECKED	BAM	08/09/2018

DIMENSIONS ARE IN INCHES	
PROJECT:	E121
WAS:	



VIKING PUMP, INC.
A Unit of IDEX Corporation
Cedar Falls, IA 50613
U.S.A.

THIS DRAWING IS THE PROPERTY OF VIKING PUMP, INC. AND IS PROPRIETARY IN GENERAL AND DETAIL. IT SHALL NOT BE COPIED OR ITS CONTENTS REVEALED TO OUTSIDE PARTIES WITHOUT THE WRITTEN CONSENT OF VIKING PUMP, INC.

3D

DWG. NO.
MV-1162

SHEET 1 OF 1

REV. B.0

08/09/2018