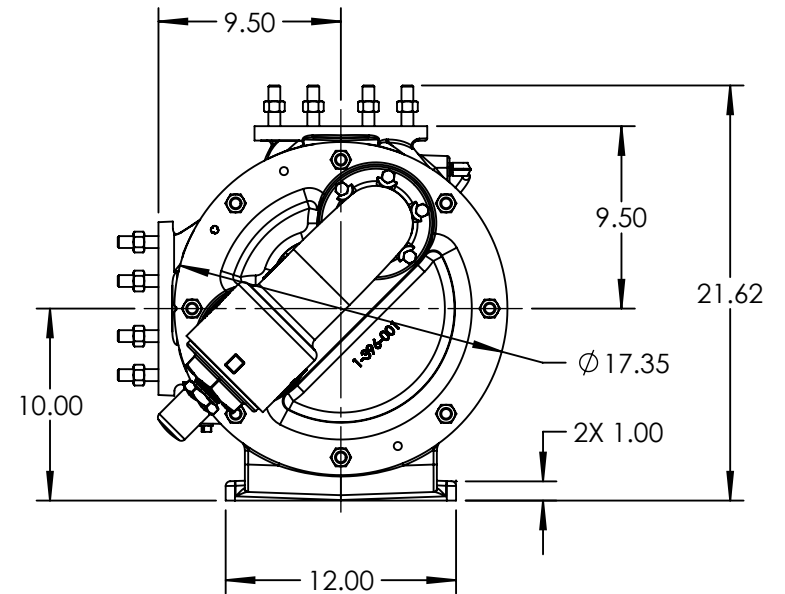
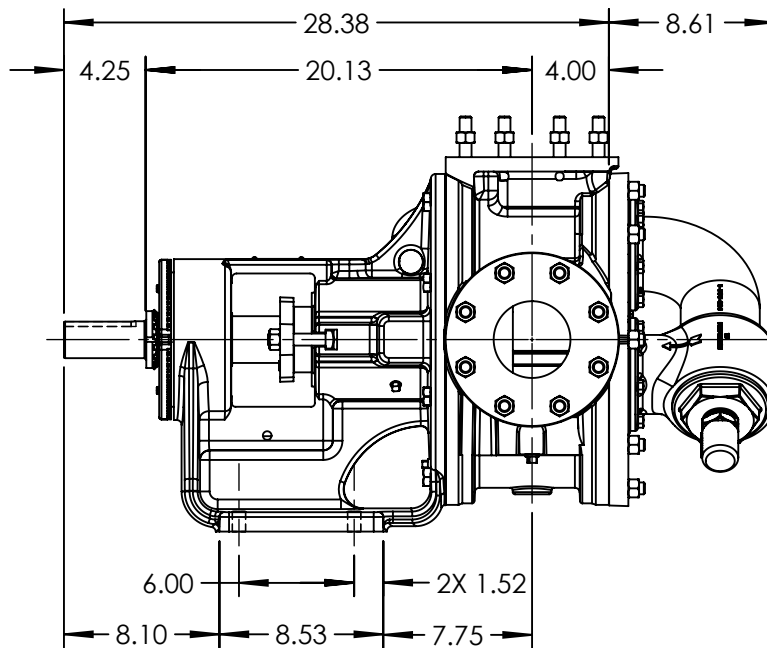


PORTS: 2X 4" FLANGES  
SUITABLE FOR USE WITH  
CLASS 125 ANSI



STANDARD MODELS: M124A, M4124A

NOTES:

1. ALL DIMENSIONS ARE FOR REFERENCE ONLY.

STATE	Released	09/01/2016
DRAWN	mcrawford	3/8/2016
CHECKED	CJN	08/31/2016

DIMENSIONS ARE IN INCHES	
PROJECT:	E176
WAS:	EX-E176-21



VIKING PUMP, INC.  
A Unit of IDEX Corporation  
Cedar Falls, IA 50613  
U.S.A.

THIS DRAWING IS THE PROPERTY OF VIKING PUMP, INC. AND IS PROPRIETARY IN GENERAL AND DETAIL. IT SHALL NOT BE COPIED OR ITS CONTENTS REVEALED TO OUTSIDE PARTIES WITHOUT THE WRITTEN CONSENT OF VIKING PUMP, INC.

3D

DWG. NO.  
MV-1165

SHEET 1 OF 1

REV. C.0  
09/01/2016