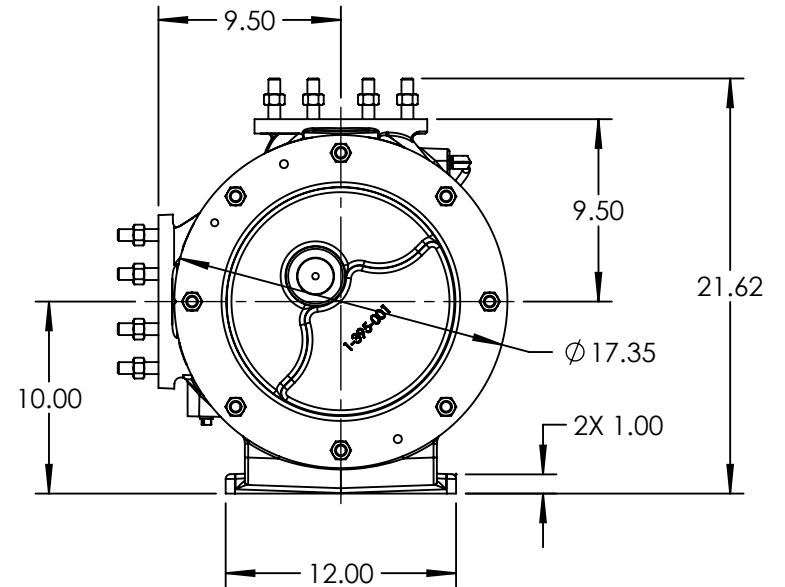
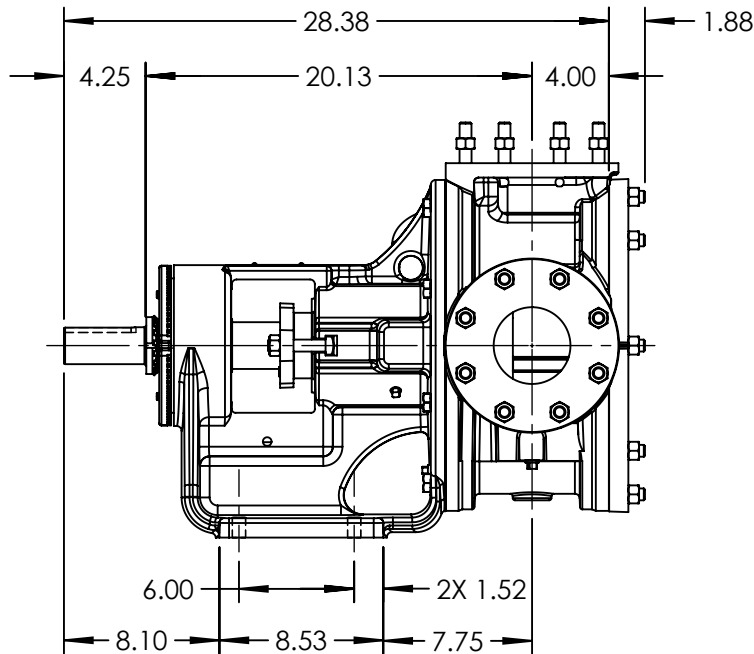


PORTS: 2X 4" FLANGES
SUITABLE FOR USE WITH
CLASS 125 ANSI



NOTES:

1. ALL DIMENSIONS ARE FOR REFERENCE ONLY.

STANDARD MODELS: M124A, M4124A

STATE	Released	08/31/2016
DRAWN	mcrawford	8/25/2016
CHECKED	CJN	08/31/2016

DIMENSIONS ARE IN
INCHES
PROJECT:
WAS:



VIKING PUMP, INC.
A Unit of IDEX Corporation
Cedar Falls, IA 50613
U.S.A.

THIS DRAWING IS THE PROPERTY OF
VIKING PUMP, INC. AND IS PROPRIETARY
IN GENERAL AND DETAIL. IT SHALL NOT BE
COPIED OR ITS CONTENTS REVEALED TO
OUTSIDE PARTIES WITHOUT THE WRITTEN
CONSENT OF VIKING PUMP, INC.

3D

DWG. NO.
MV-1167

SHEET 1 OF 1

REV. A.0

08/31/2016