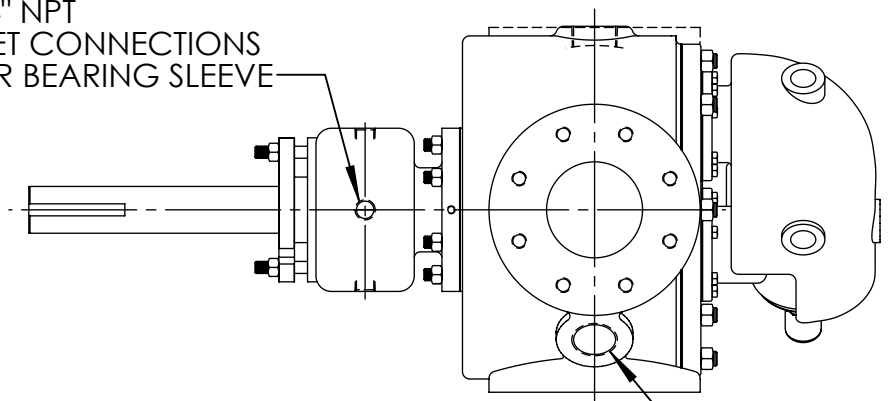
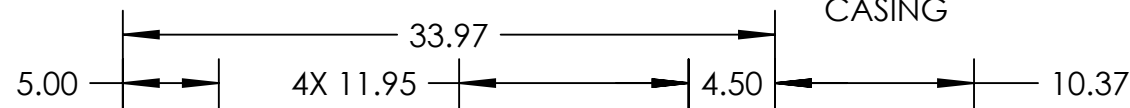


4X 3/4" NPT  
JACKET CONNECTIONS  
ROTOR BEARING SLEEVE



2X 2" NPT  
JACKET CONNECTIONS  
CASING

PORTS: 5" FLANGE  
WITH STUDS AND NUTS - NOT SHOWN  
SUITABLE FOR USE WITH  
ANSI CLASS 125 FLANGE



.62 X .31  
KEYWAY

$\phi$  2.4375  
 $\phi$  2.4355

$\phi$  8.50

4X  $\phi$  .75

8.50

6.25

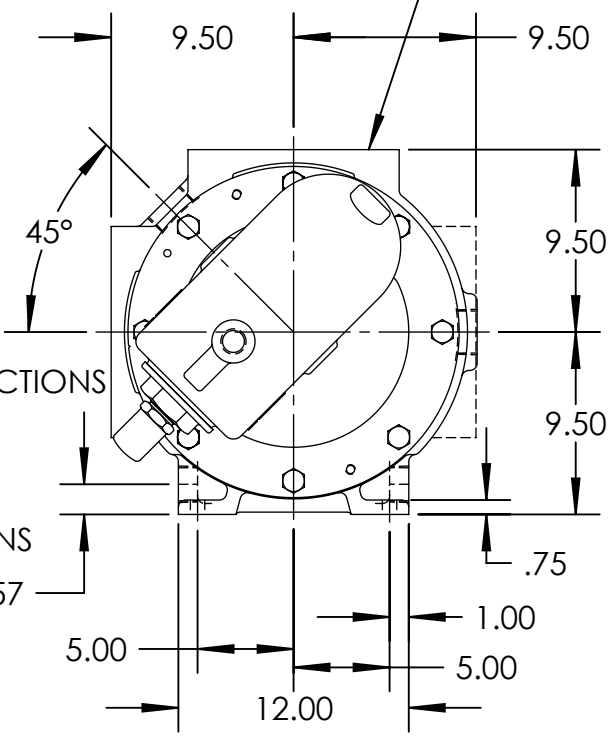
.18

5X 1" NPT  
JACKET CONNECTIONS  
RELIEF VALVE

2X 1-1/2" NPT  
JACKET CONNECTIONS  
CASING

1.44

2X 1.57



STANDARD MODELS: N34, N434

|         |          |            |
|---------|----------|------------|
| STATE   | Released | 04/21/2010 |
| DRAWN   | Imason   | 04/19/2010 |
| CHECKED | JAG      | 04/21/2010 |

DIMENSIONS ARE IN  
INCHES  
PROJECT:  
WAS:



VIKING PUMP, INC.  
A Unit of IDEX Corporation  
Cedar Falls, IA 50613  
U.S.A.

THIS DRAWING IS THE PROPERTY OF  
VIKING PUMP, INC. AND IS PROPRIETARY  
IN GENERAL AND DETAIL. IT SHALL NOT BE  
COPIED OR ITS CONTENTS REVEALED TO  
OUTSIDE PARTIES WITHOUT THE WRITTEN  
CONSENT OF VIKING PUMP, INC.

2D

DWG. NO.  
NV-393

SHEET 1 OF 1

REV. A.1  
04/21/2010