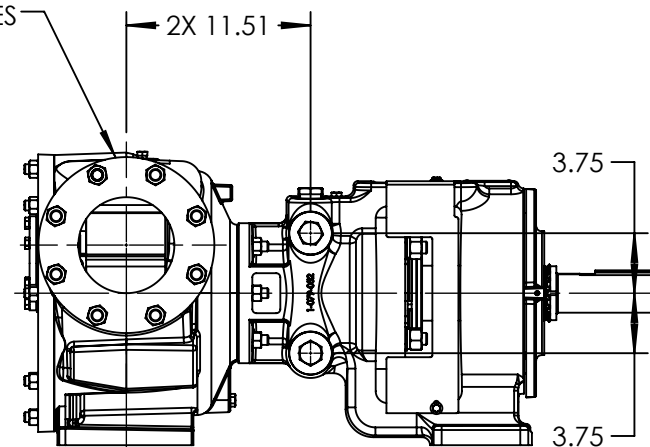
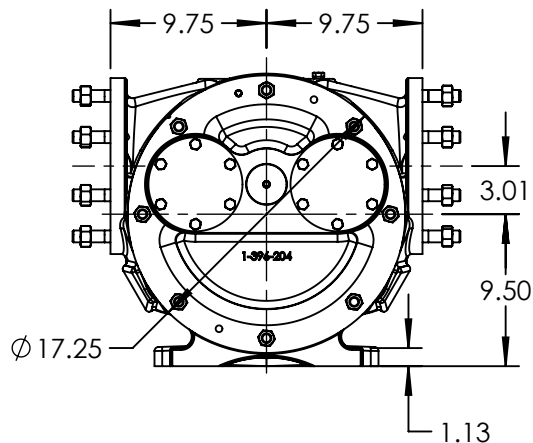


PORTS: 2X 6" FLANGES
SUITABLE FOR USE WITH
CLASS 150 ANSI FLANGES



NOTES:

1. ALL DIMENSIONS ARE FOR REFERENCE ONLY.

STANDARD MODELS: N4323AA

STATE	Released	02/16/2017
DRAWN	NBorglum	2/10/2017
CHECKED	BAM	02/15/2017

DIMENSIONS ARE IN
INCHES
PROJECT:
WAS:



VIKING PUMP, INC.
A Unit of IDEX Corporation
Cedar Falls, IA 50613
U.S.A.

THIS DRAWING IS THE PROPERTY OF
VIKING PUMP, INC. AND IS PROPRIETARY
IN GENERAL AND DETAIL. IT SHALL NOT BE
COPIED OR ITS CONTENTS REVEALED TO
OUTSIDE PARTIES WITHOUT THE WRITTEN
CONSENT OF VIKING PUMP, INC.

3D

DWG. NO.
NV-760

SHEET 1 OF 1

REV. A.0

02/16/2017 2/10/2017