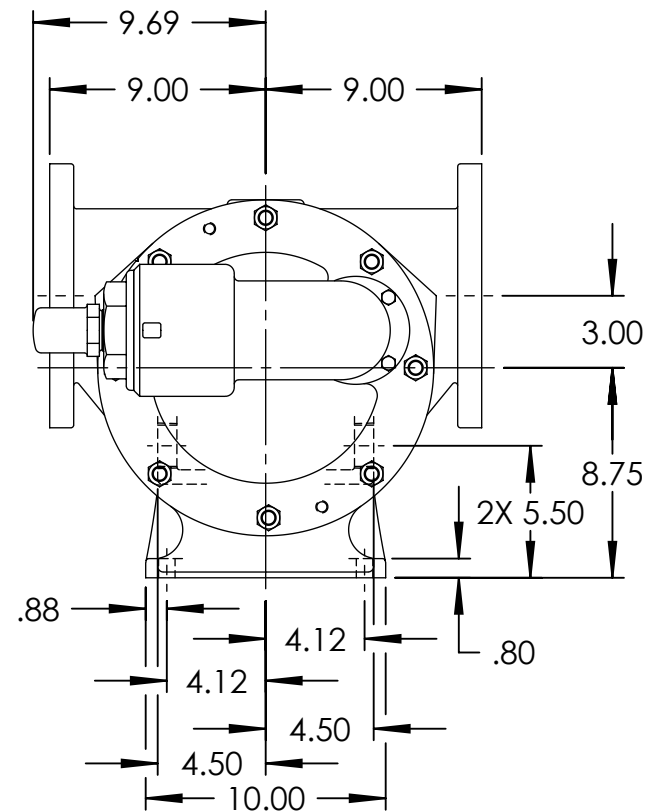
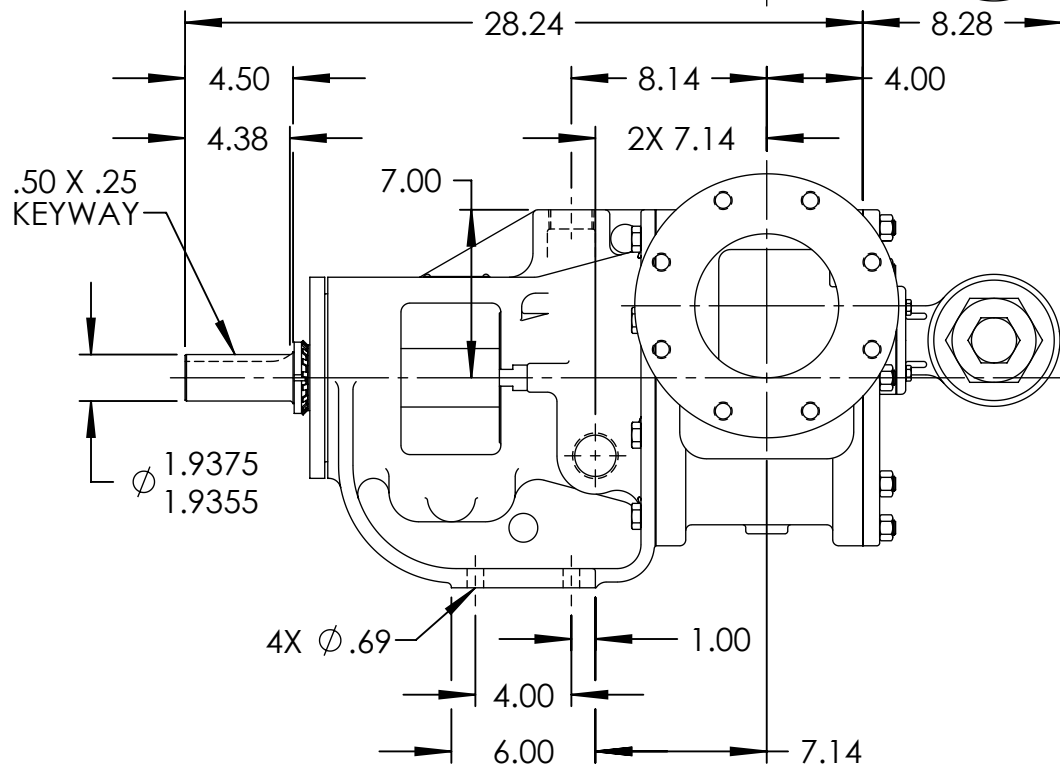
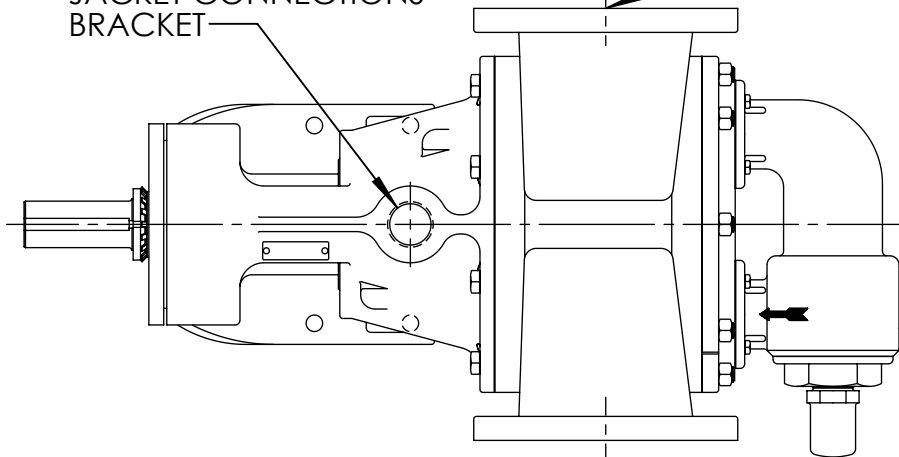


3X 1-1/2" NPT
JACKET CONNECTIONS
BRACKET

PORTS: 6" OPPOSITE FLANGES
STUDS AND NUTS - NOT SHOWN
SUITABLE FOR USE WITH
CLASS 125 ANSI FLANGES
(QS224A, QS4224A, QS4224B)
CLASS 150 ANSI FLANGES
(QS223A, QS4223A,
QS226A, QS4226A,
QS227A, QS4227A)



STANDARD MODELS: QS224A, QS4224A, QS223A, QS4223A, QS226A, QS4226A, QS227A, QS4227A, QS4224B

STATE	Released	08/12/2016
DRAWN	sjakel	11/4/2010
CHECKED	CJM	08/11/2016

DIMENSIONS ARE IN
INCHES
PROJECT:
WAS:



VIKING PUMP, INC.
A Unit of IDEX Corporation
Cedar Falls, IA 50613
U.S.A.

THIS DRAWING IS THE PROPERTY OF
VIKING PUMP, INC. AND IS PROPRIETARY
IN GENERAL AND DETAIL. IT SHALL NOT BE
COPIED OR ITS CONTENTS REVEALED TO
OUTSIDE PARTIES WITHOUT THE WRITTEN
CONSENT OF VIKING PUMP, INC.

2D

DWG. NO.
QV-1553

SHEET 1 OF 1

REV. B.1

08/12/2016