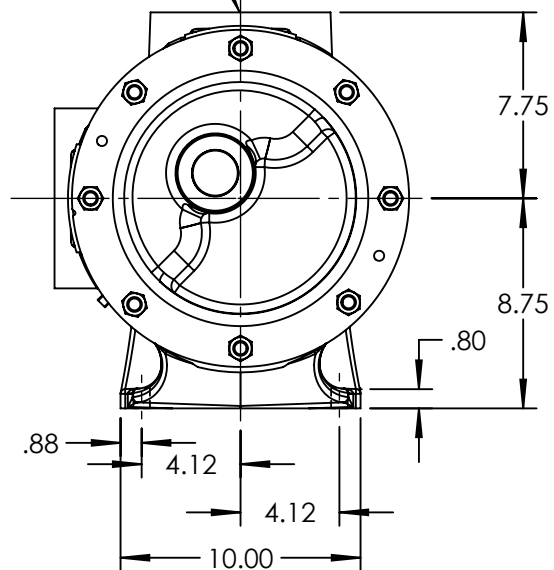


PORTS: 2X 3" FLANGES
 WITH STUDS AND NUTS (NOT SHOWN)
 SUITABLE FOR USE WITH
 CLASS 125 ANSI FLANGES
 (124A, 4124A, 4124B, 4624B)
 CLASS 150 ANSI FLANGES
 (126A, 4126A, 123A, 4123A,
 127A, 4127A)



STANDARD MODEL: Q4624B
 MODELS WITH OPTIONAL FLANGED PORTS: Q124A, Q4124A, Q123A, Q4123A, Q126A, Q4126A,
 Q127A, Q4127A

NOTES:
 1. ALL DIMENSIONS ARE FOR REFERENCE ONLY.

STATE	Released	09/14/2016
DRAWN	NBorglum	9/14/2016
CHECKED	BAM	09/14/2016

DIMENSIONS ARE IN
 INCHES
 PROJECT:
 WAS:



VIKING PUMP, INC.
 A Unit of IDEX Corporation
 Cedar Falls, IA 50613
 U.S.A.

THIS DRAWING IS THE PROPERTY OF
 VIKING PUMP, INC. AND IS PROPRIETARY
 IN GENERAL AND DETAIL. IT SHALL NOT BE
 COPIED OR ITS CONTENTS REVEALED TO
 OUTSIDE PARTIES WITHOUT THE WRITTEN
 CONSENT OF VIKING PUMP, INC.

3D

DWG. NO.
 QV-2117

SHEET 1 OF 1

REV. A.0

09/14/2016