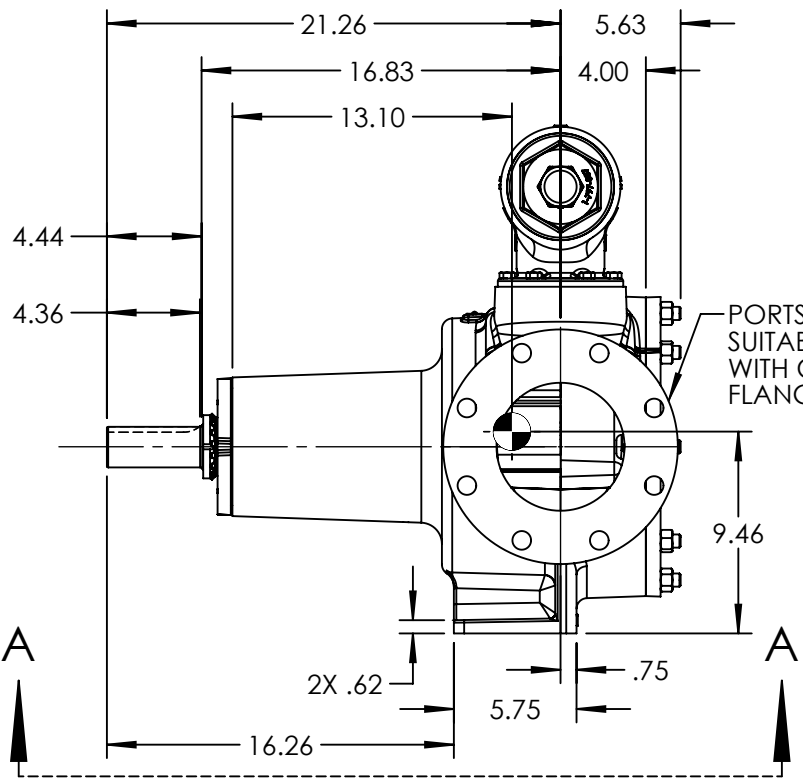
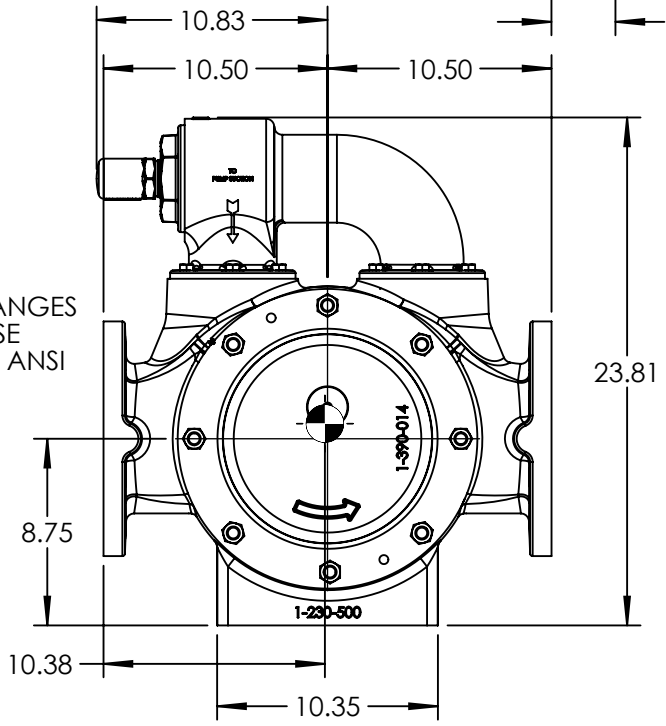


VIEW A-A



PORTS: 2X 6" FLANGES
SUITABLE FOR USE
WITH CLASS 125 ANSI
FLANGES



NOTES:
1. ALL DIMENSIONS ARE FOR REFERENCE ONLY.

STANDARD MODELS: Q4195, QS4195

STATE	Released	03/19/2015
DRAWN	cmihm	12/17/2014
CHECKED	BAM	03/19/2015

DIMENSIONS ARE IN INCHES	
PROJECT: E151	
WAS: EX-E151-29	



VIKING PUMP, INC.
A Unit of IDEX Corporation
Cedar Falls, IA 50613
U.S.A.

THIS DRAWING IS THE PROPERTY OF VIKING PUMP, INC. AND IS PROPRIETARY IN GENERAL AND DETAIL. IT SHALL NOT BE COPIED OR ITS CONTENTS REVEALED TO OUTSIDE PARTIES WITHOUT THE WRITTEN CONSENT OF VIKING PUMP, INC.

3D

DWG. NO.
QV-2055

SHEET 1 OF 1

REV. A.0
03/19/2015