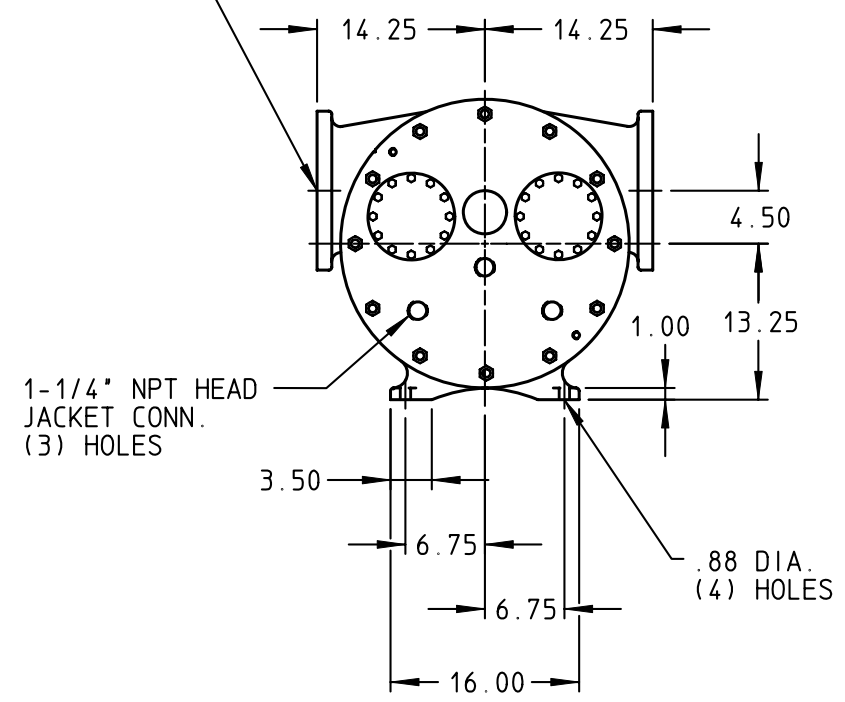


PORTS: 8" OPPOSITE FLANGES  
WITH STUDS AND NUTS (NOT SHOWN)  
SUITABLE FOR USE WITH  
125# ANSI (324A, 4324A)  
150# ANSI (323A, 4323A  
327A, 4327A)



MODELS WITH OPTIONAL FLANGED PORTS: R323A, R4323A, R327A, R4327A, R324A, R4324A

NOTE: FOOT WIDTH DIMENSIONS ARE THE SAME FOR BOTH CASING & BRACKET

DRAWN RICH M DATE 10 MAR 2000  
CHECKED DC DATE 10 MAR 2000

THIS DRAWING IS THE PROPERTY OF VIKING PUMP INC. AND IS PROPRIETARY IN GENERAL AND DETAIL. IT SHALL NOT BE COPIED OR ITS CONTENTS REVEALED TO OUTSIDE PARTIES WITHOUT THE WRITTEN CONSENT OF VIKING PUMP INC.

**VIKING PUMP**  
VIKING PUMP, INC.  
A Unit of IDEX Corporation  
Cedar Falls, Iowa 50613  
U.S.A.

DRAWING NO.  
**RV-346**

REV. F  
17 MAR 2009