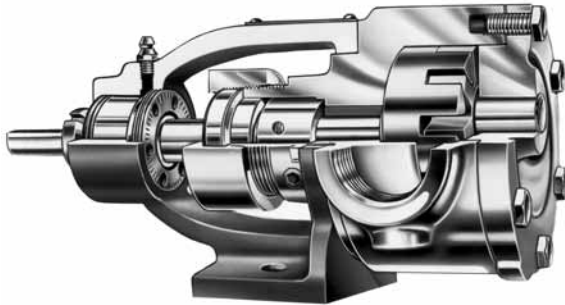


VIKING® HEAVY DUTY ALLOY PUMPS

SERIES 724 AND 4724

Section	210
Page	210.1
Issue	I

FEATURES



SERIES 4724 Cutaway View
Mechanical Seal, 1½, 3 and 5 GPM Sizes

① Pressure Range	200 PSI (14 BAR) for 100 SSU (21 cSt) and above (Small Pumps—"F", "FH" and "G" sizes)
	150 PSI (10 BAR) for 2500 SSU (550 cSt) and above (Large Pumps—"H" and larger sizes)
① Temperature Range	100 PSI (7 BAR) for 100 (21 cSt)-2500 SSU (550 cSt) (Large Pumps—"H" and larger sizes)
	50 PSI (3 BAR) for 38 to 100 SSU (4 to 21 cSt) (Small Pumps—"F", "FH" and "G" sizes)
① Viscosity Range	38 SSU to 2,000,000 SSU (4 to 440,000 cSt)



SERIES 4724 Cutaway View
Mechanical Seal, 10 to 110 GPM Sizes

② G.P.M. 1½-3-5-10-20-35-50-90-110 (m³/hr .3-.7-1-2-5-8-11-20-25) (Nominal Rating)

The 724 and 4724 Series Heavy-Duty line of 316 Stainless Steel pumps feature the foot type bracket with rotor thrust control. All wetted parts are 316 Stainless Steel. The three smaller pumps include opposite port casings, others are right angle port construction. All have revolvable casings for handy port selection and choice of either packing or mechanical seal.

The small pumps are especially useful in pilot plant service, small metering applications, accurate chemical additive processing, pumping of pharmaceuticals in small capacities and for feed and product pumps on evaporators and distillation systems. The six larger sizes meet the needs of moving corrosive liquids when greater capacities are needed in chemical and other processing plants.

In placing orders for 724 and 4724 Series pumps, please furnish the following information:

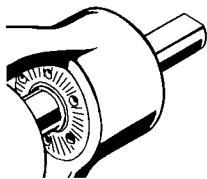
1. Liquid pumped
2. Viscosity of liquid, S.S.U.
3. Specific Gravity
4. Temperature of Liquid
5. Capacity of Pump
6. Suction lift or head
7. Discharge Pressure

① See following pages or consult factory for specific recommendations on individual pump models or sizes.

② Nominal capacities based on handling thin liquids.

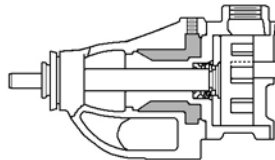
③ 300°F. maximum for small pumps; "F", "FH" & "G".

Metric conversions are based on US measurements and rounded to the nearest whole number.



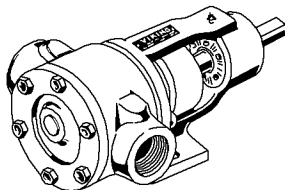
INTEGRAL THRUST BEARING

The integral thrust bearing on the series 724 and 4724 alloy pumps makes possible outstanding performance on heavy-duty applications. The positive-lock thrust control allows for accurate axial positioning of rotor and shaft.



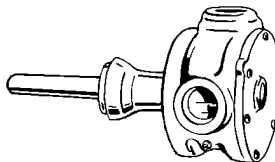
COMPLETE JACKETING (6 large size pumps)

Shaded area above shows complete jacketed areas for maintaining uniform temperature, hot or cold, surrounding packing or mechanical seal area as well as the back and front area of pump. Jacketed head plate available on request.



NO REDUCTION IN SPEED REQUIRED

The three small sizes of alloy pumps can be operated at full motor speeds. This means a saving in speed reduction equipment. Larger sizes can also be operated at full catalog speed. See units on following pages (Section 210).



ALL PARTS CONTACTING LIQUID ARE OF ALLOY CONSTRUCTION (All Sizes) (Large size illustrated)

All parts contacting liquid being pumped are of alloy construction. Mounting bracket is cast iron.

Section	210
Page	210.2
Issue	I

VIKING® HEAVY DUTY ALLOY PUMPS

SERIES 724 AND 4724

UNMOUNTED PUMPS

SERIES 724 and 4724 Pumps
“F”, “FH” and “G” Sizes



SERIES 724 and 4724 Pumps
“H” through “LL” Sizes

All 724 and 4724 Series Stainless Steel pumps of “G” size and larger are standard with integral stainless steel valve on pump head. Pumps of “G” size and larger can also be equipped with cast iron jacketed head plate if desired. Combination of plate and valve not available.

Contact factory for optional alloy materials.

Dimensions for Unmounted Pumps—See page 210.7.

CONSTRUCTION—724 AND 4724 SERIES (“F” THROUGH “LL” SIZES)

Pump Construction	Casing	Head	Bracket	Rotor	Idler	Rotor Shaft	Idler Pin	Bushings	Shaft Sealing		Internal Relief Valve
									Packed	Mechanical Seal	
316 Stainless	Stainless Steel	Stainless Steel	Iron	Stainless Steel	Stainless Steel	Stainless Steel	Coated Stainless Steel	Carbon Graphite	Standard	Stainless Steel, PTFE Carbon Graphite and Stellite	Stainless Steel

SPECIFICATIONS — UNMOUNTED PUMPS

Model Number	Port Size	Nominal Pump Rating		Motor HP Re-quired at Rated Speed Pumping 100 SSU Liquid			Maximum Hydro-static Pressure			Maximum Temperature °F. (°C.)		Maximum Recommended Discharge Pressure PSIG				Maximum Temperature Pressure of Fluids In Jackets				Approximate Shipping Weight With Valve			
												38 to 100 SSU			100 to 2500 SSU		2500 SSU and Up		Steam (Sat)		Heat Transfer Oil		
												Packed	Mech. Seal	Inches	GPM (m ³ /hr)	RPM	50 PSI (3 BAR)	100 PSI (7 BAR)	PSIG (BAR)		Packed	Mech. Seal	Temp. °F. (°C.)
F724	F4724	½	1½ (.3)	1800	¼	¼	400 (28)	300 (149)	300 (149)	100	200	200	① 11 (5)						
FH724	FH4724	¾	3 (.7)	1800	¼	½	400 (28)	300 (149)	300 (149)	100	200	200	① 12 (5.5)						
G724	G4724	1	5 (1)	1200	½	1	400 (28)	300 (149)	300 (149)	100	200	200	14 (6)						
H724	H4724	1½	10 (2)	1200	¾	1½	400 (28)	375 (190)	375 (190)	50	100	150	365 (185)	150 (10)	450 (232)	150 (10)	48 (22)						
HL724	HL4724	1½	20 (5)	1200	1	2	400 (28)	375 (190)	375 (190)	50	100	150	365 (185)	150 (10)	450 (232)	150 (10)	50 (23)						
K724	K4724	2	45 (10)	520	2	5	400 (28)	350 (175)	350 (175)	50	100	150	365 (185)	150 (10)	450 (232)	150 (10)	125 (57)						
KK724	KK4724	2	65 (15)	520	3	5	400 (28)	350 (175)	350 (175)	50	100	150	365 (185)	150 (10)	450 (232)	150 (10)	130 (59)						
L724	L4724	2	90 (20)	420	5	10	400 (28)	350 (175)	350 (175)	50	100	150	365 (185)	150 (10)	450 (232)	150 (10)	170 (77)						
LQ724	LQ4724	③ 2½	90 (20)	420	5	10	400 (28)	350 (175)	350 (175)	50	100	150	365 (185)	150 (10)	450 (232)	150 (10)	205 (93)						
LL724	LL4724	③ 3	110 (25)	420	5	10	400 (28)	350 (175)	350 (175)	50	100	150	365 (185)	150 (10)	450 (232)	150 (10)	240 (109)						

① Relief valve not available on “F” and “FH” sizes.

② For mechanical seal pumps on applications with viscosities above 25,000 SSU (5,500 cSt), provide details for recommendation.

③ Ports are suitable for use with 150# ANSI companion flanges or flanged fittings. All others tapped for standard pipe.

④ Standard seal can be used from 0°F. to +450°F. With special construction, temperatures from -120°F. to +500°F. can be handled with “H” size and larger pumps.

⑤ For handling liquids less than 38 SSU (4 cSt), special construction features may be required. Provide details for recommendations.

⑥ Cast iron jacketed head plate available for “G” size and larger. Relief valve cannot be used on head of pump with jacketed head plate.

⑦ Idler pin on “F” and “FH” size is stellite.

Note: Heavy-Duty Universal Seal pumps are also available in 316 Stainless Steel construction; “Q” size operating up to 350 RPM, “M” and “N” sizes to 280 RPM and “R” size to 190 RPM. Refer to catalog section 630.

Metric conversions are based on US measurements and rounded to the nearest whole number.

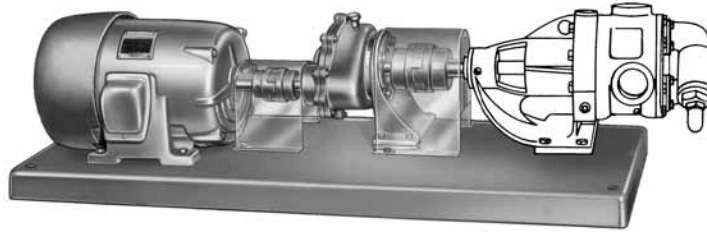
VIKING® HEAVY DUTY ALLOY PUMPS

SERIES 724 AND 4724

Section	210
Page	210.3
Issue	I

VIKING HELICAL GEAR REDUCER UNITS (“R” DRIVE)

SERIES
724 AND 4724
PUMPS
with “R” Drive
“B” Reducer



Viking 724 and 4724 Series pumps are available with rugged, compact and exceptionally quiet type “A” and “B” helical gear reducers, all mounted on formed steel bases with motors. Using “A” reducers with two size pumps, “H” and “HL”, and three gear ratios from 2.76 to 1; to 4.17 to 1 and with 1200 or 1800 RPM motors, a capacity range to 17 GPM can be obtained. Using “B” reducers with four size pumps, “K” through “LL”, and eight gear ratios from 1.87 to 1; 7.65 to 1 and with 1200 or 1800 RPM motors, a capacity range to 103 GPM can be obtained.

Dimensions for “R” Drive Units-See Page 210.8.

SIZE “A” REDUCER SPECIFICATIONS AND PUMP CAPACITY TABLE

Motor RPM	Reducer Ratio	Maximum Reducer HP	Pump RPM	Pump Models and Capacity [Ⓢ] GPM With Size “A” Reducer			
				H724R		HL724R	
				50 PSI (3 BAR)	100 PSI (7 BAR)	50 PSI (3 BAR)	100 PSI (7 BAR)
1800	2.76 to 1	5	640	5.4	4.9	10.5	10
	3.43 to 1	5	520	4.3	3.8	8.2	7.8
	4.17 to 1	3	420	3.4	3.0	6.5	6.1
1200	2.76 to 1	3	420	3.4	2.9	6.5	6.1
	3.43 to 1	3	350	2.8	2.3	5.1	4.8
	4.17 to 1	2	280	2.1	1.7	3.9	3.5

SIZE “B” HELICAL REDUCER SPECIFICATIONS AND PUMP CAPACITY TABLE

Motor RPM	Reducer Ratio	Maximum Reducer HP	Pump RPM	Pump Models and Capacity [Ⓢ] GPM with Size “B” Reducer									
				K724R or K4724R		KK724R or KK4724R		L724R or L4724R		LQ724R or LQ4724R		LL724R or LL4724R	
				50 PSI (3 BAR)	100 PSI (7 BAR)	50 PSI (3 BAR)	100 PSI (7 BAR)	50 PSI (3 BAR)	100 PSI (7 BAR)	50 PSI (3 BAR)	100 PSI (7 BAR)	50 PSI (3 BAR)	100 PSI (7 BAR)
1800	4.19:1	10	420	37	34	52	50	86	82	86	82	107	103
	5.06:1	10	350	30	27	43	41	70	67	70	67	88	84
	6.27:1	7½	280	23	20	33	31	55	51	55	51	68	64
	7.65:1	5	230	18	15	27	25	44	40	44	40	55	51
1200	2.76:1	10	420	37	34	52	50	86	82	86	82	107	103
	3.40:1	10	350	30	27	43	41	70	67	70	67	88	84
	4.19:1	7½	280	23	20	33	31	55	51	55	51	68	64
	5.06:1	7½	230	18	15	27	25	44	40	44	40	55	51
	6.27:1	5	190	14	11	22	20	36	32	36	32	45	40
	7.65:1	5	155	11	8	17	15	27	24	27	24	36	31

Note: For pump speed of 520 RPM refer to Catalog Section 610 page 5 or Electric Performance Curve generator program.

SPECIFICATIONS - “R” DRIVE UNITS

Model Number	Type of Reducer	Port Size Inches	Nominal Pump Rating		Motor HP Required At Rated Speed Pumping 100 SSU Liquid		Maximum Hydrostatic Pressure PSIG (BAR)	Maximum Temperature °F. (°C.)		Maximum Recommended Discharge Pressure PSIG			Maximum Temperature Pressure of Fluids In Jackets				Approximate Shipping Weight With Valve 724 & 4724 Series (Less Power) Pounds (KG)	
			GPM (m/hr)	RPM	50 PSI (3 BAR)	100 PSI (7 BAR)		Packed	Mech. Seal	38 to 100 SSU	100 to 2500 SSU	2500 SSU and Up	Steam (Sat)		Heat Transfer Oil			
Packed	Ⓛ Mech. Seal												Temp. °F. (°C.)	Pressure PSIG (BAR)	Temp. °F. (°C.)	Pressure PSIG (BAR)		
H724R	H4724R	A	1½	6 (1.5)	640	½	¾	400 (28)	375 (190)	375 (190)	50	100	150	365 (185)	150 (10)	450 (232)	150 (10)	125 (57)
HL724R	HL4724R	A	1½	11 (3)	640	½	1	400 (28)	375 (190)	375 (190)	50	100	150	365 (185)	150 (10)	450 (232)	150 (10)	130 (59)
K724R	K4724R	B	2	45 (10)	520	2	5	400 (28)	350 (175)	350 (175)	50	100	150	365 (185)	150 (10)	450 (232)	150 (10)	340 (154)
KK724R	KK4724R	B	2	65 (15)	520	3	5	400 (28)	350 (175)	350 (175)	50	100	150	365 (185)	150 (10)	450 (232)	150 (10)	345 (157)
L724R	L4724R	B	2	90 (20)	420	5	10	400 (28)	350 (175)	350 (175)	50	100	150	365 (185)	150 (10)	450 (232)	150 (10)	385 (175)
LQ724R	LQ4724R	B	Ⓢ 2½	90 (20)	420	5	10	400 (28)	350 (175)	350 (175)	50	100	150	365 (185)	150 (10)	450 (232)	150 (10)	420 (191)
LL724R	LL4724R	B	Ⓢ 3	110 (25)	420	5	10	400 (28)	350 (175)	350 (175)	50	100	150	365 (185)	150 (10)	450 (232)	150 (10)	455 (207)

- Ⓛ For mechanical seal pumps on applications with viscosities above 25,000 SSU (5,500 cSt), provide details for recommendation.
- Ⓢ Ports are suitable for use with 150# ANSI companion flanges or flanged fittings. All others tapped for standard pipe.
- Ⓢ With special construction, temperatures to 500°F. can be handled.
- Ⓢ For handling liquids less than 38 SSU (4 cSt), special construction features may

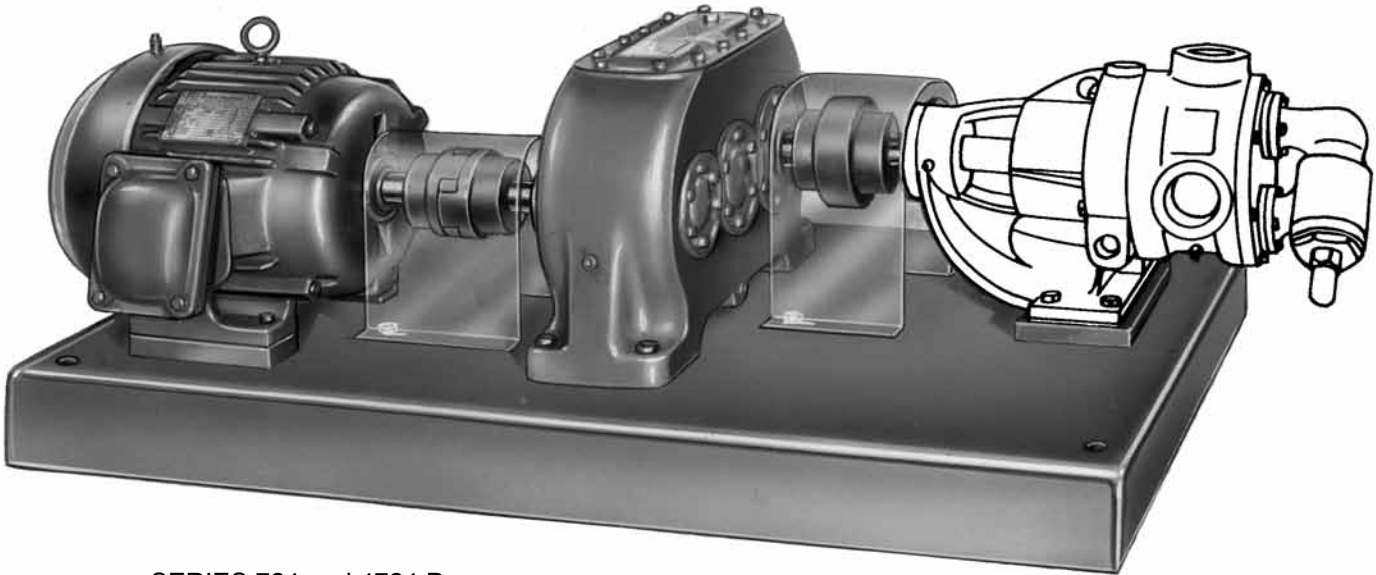
- be required. Provide details for recommendations.
- Ⓢ Jacketed head plate available. Relief valve cannot be used on head of pump with jacketed head plate.
- Ⓢ Capacities are based on 100 SSU liquid and 10” Mercury Vacuum.
- Ⓢ Not available with “A” size reducer.

Metric conversions are based on US measurements and rounded to the nearest whole number.

Section	210
Page	210.4
Issue	I

VIKING® HEAVY DUTY ALLOY PUMPS SERIES 724 AND 4724

GEAR REDUCTION UNITS (“P” DRIVE)



SERIES 724 and 4724 Pumps
with “P” Drive

Viking “P” Drive Units include “K” through “LL” size 724 and 4724 Stainless Steel pumps mounted on formed steel bases with separate heavy-duty gear reducers. Pumps, reducers and motors are connected through flexible couplings with guard and with separate reducers, eliminating radial load on either pump or motor shafts.

SPECIFICATIONS—“P” DRIVE UNITS

Model Number		Port Size	Nominal Pump Rating		Motor HP Required at Rated Speed Pumping 100 SSU Liquid		Maximum Hydrostatic Pressure	③ Maximum Temperature Degrees F.		Maximum Recommended Discharge Pressure PSIG			⑤ Maximum Temperature Pressure of Fluids In Jackets				Approximate Shipping Weight With Valve 724 & 4724 Series
													Steam (Sat)		Heat Transfer Oil		
Packed	① Mech. Seal	Inches	GPM (m/hr)	RPM	50 PSI (3 BAR)	100 PSI (7 BAR)	PSIG (BAR)	Packed	Mech. Seal	④ 38 to 100 SSU	100 to 2500 SSU	2500 SSU and Up	Temp. °F. (°C.)	Pressure PSIG (BAR)	Temp. °F. (°C.)	Pressure PSIG (BAR)	Less Reducer and Power Lbs. (KG)
K724P	K4724P	2	45 (10)	520	2	5	400 (28)	350 (175)	350 (175)	50	100	150	365 (185)	150 (10)	450 (232)	150 (10)	363 (165)
KK724P	KK4724P	2	65 (15)	520	3	5	400 (28)	350 (175)	350 (175)	50	100	150	365 (185)	150 (10)	450 (232)	150 (10)	368 (127)
L724P	L4724P	2	90 (20)	420	5	10	400 (28)	350 (175)	350 (175)	50	100	150	365 (185)	150 (10)	450 (232)	150 (10)	408 (185)
LQ724P	LQ4724P	② 2½	90 (20)	420	5	10	400 (28)	350 (175)	350 (175)	50	100	150	365 (185)	150 (10)	450 (232)	150 (10)	443 (201)
LL724P	LL4724P	② 3	110 (25)	420	5	10	400 (28)	350 (175)	350 (175)	50	400	150	365 (185)	150 (10)	450 (232)	150 (10)	478 (217)

① For mechanical seal pumps on applications with viscosities above 25,000 SSU (5,500 cSt), provide details for recommendation.

② Ports are suitable for use with 150# ANSI companion flanges or flanged fittings. All others tapped for standard pipe.

③ With special construction, temperatures to 500°F. can be handled with “H” size

and larger pumps.

④ For handling liquids less than 38 SSU (4 cSt), special construction features may be required. Provide details for recommendations.

⑤ Jacketed head plate available for “H” size and larger. Relief valve cannot be used on head of pump with jacketed head plate.

Metric conversions are based on US measurements and rounded to the nearest whole number.

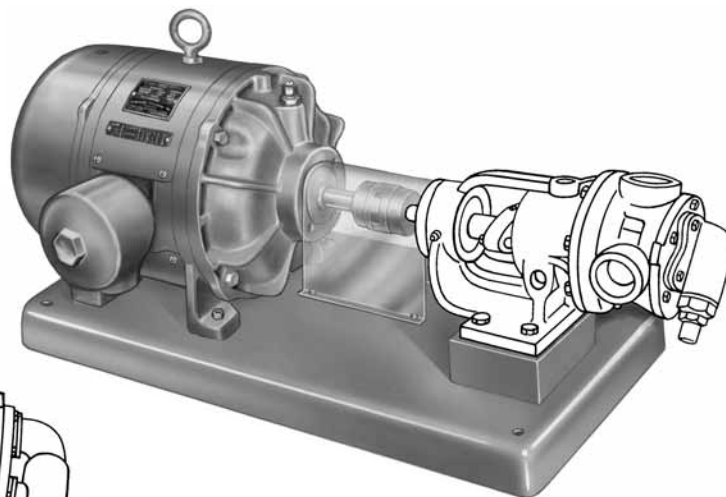
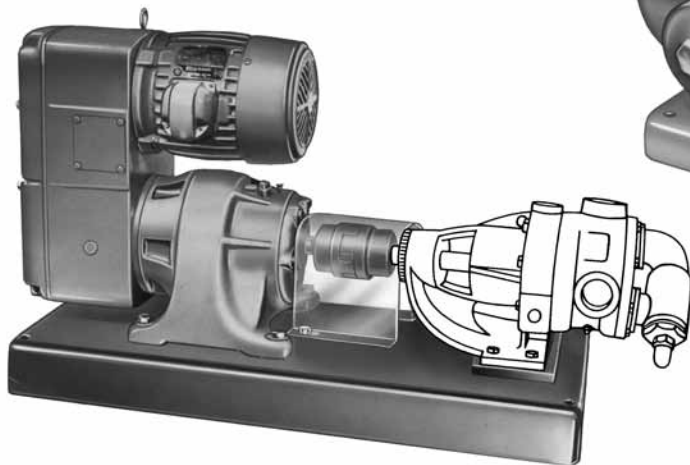
VIKING® HEAVY DUTY ALLOY PUMPS

SERIES 724 AND 4724

Section	210
Page	210.5
Issue	I

DIRECT DRIVE UNITS (“D” DRIVE)

SERIES 724 and 4724 Pumps
with “D” Drive
(vari-drive unit)
“K” through “LL” Size Pumps



SERIES 724 and 4724 Pumps
with “D” Drive
“F” through “HL” Size Pumps

The “D” drive mounting of 724 and 4724 Series pumps is specially designed for compactness and quietness of operation. In all sizes the pumps and power are mounted on formed steel bases and connected through flexible couplings with guards. As illustrated, the “K” through “LL” sizes direct connect to gearhead motors or

vari-drive units (illustrated) and the “F” and “FH” sizes direct connect to 1800 RPM motors. The “G”, “H” and “HL” pumps are direct connected to 1200 RPM motors.

Dimensions for “D” Drive Units—See Pages 210.8 and 210.9.

SPECIFICATIONS — “D” DRIVE UNITS

Model Number	Port Size	Nominal Pump Rating	Motor HP Required at Rated Speed Pumping 100 SSU Liquid		Maximum Hydrostatic Pressure	③ Maximum Temperature Degrees F.		Maximum Recommended Discharge Pressure PSIG			⑤ Maximum Temperature Pressure of Fluids In Jackets				Approximate Shipping Weight With Valve 724 & 4724 Series (Less Power) Pounds (KG)		
								Packed	Mech. Seal	④ 38 to 100 SSU	100 to 2500 SSU	2500 SSU and Up	Steam (Sat)			Heat Transfer Oil	
													Temp. °F. (°C.)	Pressure PSIG (BAR)		Temp. °F. (°C.)	Pressure PSIG (BAR)
F724D	F4724D	½	1½ (.3)	1800	¼	¼	400 (28)	300 (149)	300 (149)	100	200	200	⑥ 32 (14.5)
FH724D	FH4724D	¾	3 (.7)	1800	¼	⅓	400 (28)	300 (149)	300 (149)	100	200	200	⑥ 34 (15)
G724D	G4724D	1	5 (1)	1200	½	1	400 (28)	300 (149)	300 (149)	100	200	200	45 (20)
H724D	H4724D	1½	10 (2)	1200	¾	1½	400 (28)	375 (190)	375 (190)	50	100	150	365 (185)	150 (10)	450 (232)	150 (10)	80 (36)
HL724D	HL4724D	1½	20 (5)	1200	1	2	400 (28)	375 (190)	375 (190)	50	100	150	365 (185)	150 (10)	450 (232)	150 (10)	100 (45)
K724D	K4724D	2	45 (10)	520	2	5	400 (28)	350 (175)	350 (175)	50	100	150	365 (185)	150 (10)	450 (232)	150 (10)	245 (111)
KK724D	KK4724D	2	65 (15)	520	3	5	400 (28)	350 (175)	350 (175)	50	100	150	365 (185)	150 (10)	450 (232)	150 (10)	275 (125)
L724D	L4724D	2	90 (20)	420	5	10	400 (28)	350 (175)	350 (175)	50	100	150	365 (185)	150 (10)	450 (232)	150 (10)	335 (152)
LQ724D	LQ4724D	② 2½	90 (20)	420	5	10	400 (28)	350 (175)	350 (175)	50	100	150	365 (185)	150 (10)	450 (232)	150 (10)	370 (168)
LL724D	LL4724D	② 3	110 (25)	420	5	10	400 (28)	350 (175)	350 (175)	50	100	150	365 (185)	150 (10)	450 (232)	150 (10)	430 (195)

① For mechanical seal pumps on applications with viscosities above 25,000 SSU (5,500 cSt), provide details for recommendation.
 ② Ports are suitable for use with 150# ANSI companion flanges or flanged fittings. All others tapped for standard pipe.
 ③ With special construction, temperatures to 500°F. can be handled with “H” size and larger pumps.

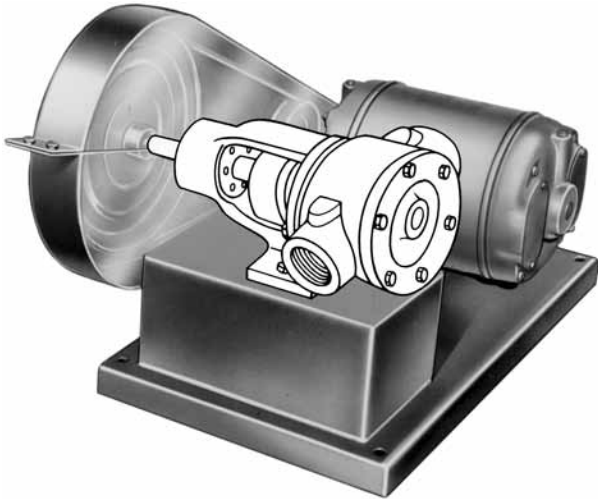
④ For handling liquids less than 38 SSU (4 cSt), special construction features may be required. Provide details for recommendations.
 ⑤ Jacketed head plate available for “H” size and larger pumps. Relief valve cannot be used on head of pump with jacketed head plate.
 ⑥ Not available with valve on head.

Metric conversions are based on US measurements and rounded to the nearest whole number.

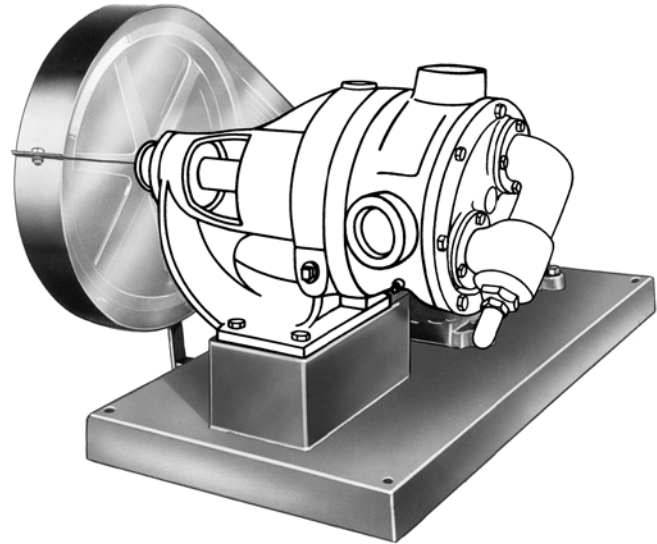
Section	210
Page	210.6
Issue	I

VIKING® HEAVY DUTY ALLOY PUMPS SERIES 724 AND 4724

V-BELT DRIVE UNITS (“V” DRIVE)



SERIES 724 and 4724 Pumps
with “V” Drive
“F” through “G” Size Pumps



SERIES 724 and 4724 Pumps
with “V” Drive,
“H” through “LL” Size Pumps

The “V” Drive Heavy-Duty Units include 724 or 4724 Series pumps mounted on steel bases complete with totally guarded V-belt drive. Drive mounts on end of pump shaft. Slide rails are required on motors. Furnished as extra item. For small units, motors usually furnished with slotted feet. Maximum standard reduction

4½ to 1 on “F” thru “HL” size units, 6 to 1 maximum on “K” and larger sizes.

Dimensions for “V” Drive Units—See Page 210.10.

SPECIFICATIONS — “V” DRIVE UNITS

Packed	Model Number	Ⓛ Mech. Seal	Port Size Inches	Nominal Pump Rating		Motor HP Required at Rated Speed Pumping 100 SSU Liquid			Maximum Hydrostatic Pressure		Ⓢ Maximum Temperature Degrees F.		Maximum Recommended Discharge Pressure PSIG			Ⓢ Maximum Temperature Pressure of Fluids In Jackets				Approximate Shipping Weight With Valve 724 & 4724 Series (Less Power) Pounds (KG)
													Ⓛ 38 to 100 SSU	100 to 2500 SSU	2500 SSU and Up	Steam (Sat)		Heat Transfer Oil		
																Temp. °F. (°C.)	Pressure PSIG (BAR)	Temp. °F. (°C.)	Pressure PSIG (BAR)	
	F724V	F4724V	½	1½ (.3)	1800	¼	¼	400 (28)	300 (149)	300 (149)	100	200	200	Ⓢ 25	(11)	
	FH724V	FH4724V	¾	3 (.7)	1800	¼	⅓	400 (28)	300 (149)	300 (149)	100	200	200	Ⓢ 27	(12)	
	G724V	G4724V	1	5 (1)	1200	½	1	400 (28)	300 (149)	300 (149)	100	200	200	53	(24)	
	H724V	H4724V	1½	10 (2)	1200	¾	1½	400 (28)	375 (190)	375 (190)	50	100	150	365 (185)	150 (10)	450 (232)	150 (10)	119	(54)	
	HL724V	HL4724V	1½	20 (5)	1200	1	2	400 (28)	375 (190)	375 (190)	50	100	150	365 (185)	150 (10)	450 (232)	150 (10)	129	(59)	
	K724V	K4724V	2	45 (10)	520	2	5	400 (28)	350 (175)	350 (175)	50	100	150	365 (185)	150 (10)	450 (232)	150 (10)	270	(123)	
	KK724V	KK4724V	2	65 (15)	520	3	5	400 (28)	350 (175)	350 (175)	50	100	150	365 (185)	150 (10)	450 (232)	150 (10)	280	(127)	
	L724V	L4724V	2	90 (20)	420	5	10	400 (28)	350 (175)	350 (175)	50	100	150	365 (185)	150 (10)	450 (232)	150 (10)	320	(145)	
	LQ724V	LQ4724V	Ⓢ 2½	90 (20)	420	5	10	400 (28)	350 (175)	350 (175)	50	100	150	365 (185)	150 (10)	450 (232)	150 (10)	355	(161)	
	LL724V	LL4724V	Ⓢ 3	110 (25)	420	5	10	400 (28)	350 (175)	350 (175)	50	100	150	365 (185)	150 (10)	450 (232)	150 (10)	385	(175)	

Ⓛ For mechanical seal pumps on applications with viscosities above 25,000 SSU (5,500 cSt), provide details for recommendation.

Ⓢ Ports are suitable for use with 150# ANSI companion flanges or flanged fittings. All others tapped for standard pipe.

Ⓢ With special construction, temperatures to 500°F. can be handled with “H” size and larger pumps.

Ⓢ For handling liquids in less than 38 SSU (4 cSt), special construction features may be required. Provide details for recommendations.

Ⓢ Jacketed head plate available for “H” size and larger pumps. Relief valve cannot be used on head of pump with jacketed head plate.

Ⓢ Not available with valve on head.

Metric conversions are based on US measurements and rounded to the nearest whole number.

VIKING® HEAVY DUTY ALLOY PUMPS

SERIES 724 AND 4724

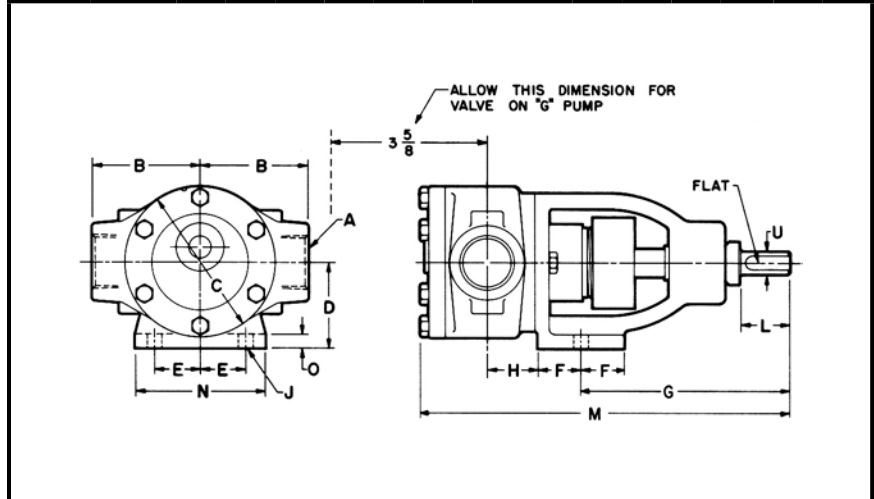
Section	210
Page	210.7
Issue	I

DIMENSIONS

These dimensions are average and not for construction purposes. Certified prints on request.

For specifications, see page 210.2.

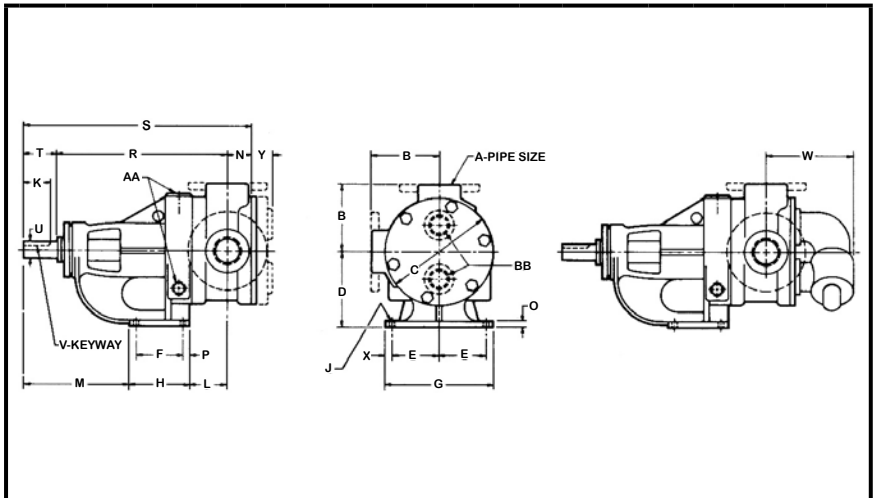
DIMENSIONS — 724 AND 4724 SERIES UNMOUNTED PUMPS “F”-“FH”-“G” SIZE



MODEL NUMBER		A	B	C	D	E	F	G	H	J	U	L	M	N	O
PACKED	SEAL														
F724	F4724	1/2	2	2 1/2	2	1 1/16	1	4 7/8	1 3/16	1 1/32	1/2	1 1/8	8 7/16	3	5/16
FH724	FH4724	3/4	2	2 1/2	2	1 1/16	1	4 7/8	1 3/16	1 1/32	1/2	1 1/8	8 7/16	3	5/16
G724	G4724	1	2 1/2	3 1/2	2	1 1/16	1	4 7/8	1 3/16	1 1/32	1/2	1 1/8	8 9/16	3	5/16

For specifications, see page 210.2.

DIMENSIONS — 724 AND 4724 SERIES UNMOUNTED PUMPS “H”-“LL” SIZE



① Ports are suitable for use with 150# ANSI (ASA) companion flanges or flanged fittings.

MODEL NO.		A	B	C	D	E	F	G	H	J	K	L	M	N	O	P	R	S	T	U	V	W	X	Y	PIPE SIZE	
PACKED	MECH. SEAL																								AA	BB
H724	H4724	1 1/2	3 1/2	4 3/4	3 1/2	2 3/4	2 1/4	6 3/4	3 1/2	15/32	1 1/2	3 1/4	5 3/16	1 5/16	9/16	5/8	10 5/16	13 1/4	1 5/8	3/4	3/16 x 3/32	4 3/16	5/8	1 11/32	1/2	1/2
HL724	HL4724	1 1/2	3 1/2	4 3/4	3 1/2	2 3/4	2 1/4	6 3/4	3 1/2	15/32	1 1/2	3 1/4	5 3/16	1 5/16	9/16	5/8	10 5/16	13 1/4	1 5/8	3/4	3/16 x 3/32	4 3/16	5/8	1 11/32	1/2	1/2
K724	K4724	2	5 1/8	8	5 1/2	4	2 3/4	9 1/4	4	17/32	2	3	9 3/8	1 3/4	5/8	5/8	14 1/8	18 1/8	2 1/4	1 1/8	1/4 x 1/8	6 7/8	5/8	1 1/2	3/4	1 1/4
KK724	KK4724	2	5 1/8	8	5 1/2	4	2 3/4	9 1/4	4	17/32	2	3	9 3/8	1 3/4	5/8	5/8	14 1/8	18 1/8	2 1/4	1 1/8	1/4 x 1/8	6 7/8	5/8	1 1/2	3/4	1 1/4
L724	L4724	2	6 1/2	10 1/4	7	4 3/8	4	10	5 3/8	17/32	2	3 3/8	9 1/8	1 3/4	5/8	5/8	15 5/8	19 5/8	2 1/4	1 1/8	1/4 x 1/8	7 1/8	5/8	1 13/16	1	1
LQ724	LQ4724	① 2 1/2	7 3/16	10 1/4	7	4 3/8	4	10	5 3/8	17/32	2	3 3/8	9 1/8	1 3/4	5/8	5/8	15 5/8	19 5/8	2 1/4	1 1/8	1/4 x 1/8	7 1/8	5/8	1 13/16	1	1
LL724	LL4724	① 3	7 3/16	10 1/4	7	4 3/8	4	10	5 3/8	17/32	2	3 3/8	9 1/8	2 1/4	5/8	5/8	15 5/8	20 1/8	2 1/4	1 1/8	1/4 x 1/8	7 5/8	5/8	1 13/16	1	1

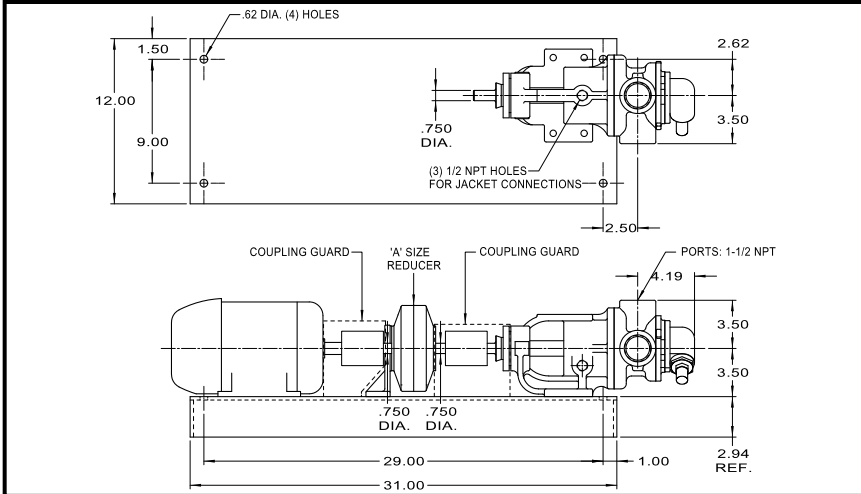
Section	210
Page	210.8
Issue	I

VIKING® HEAVY DUTY ALLOY PUMPS

SERIES 724 AND 4724

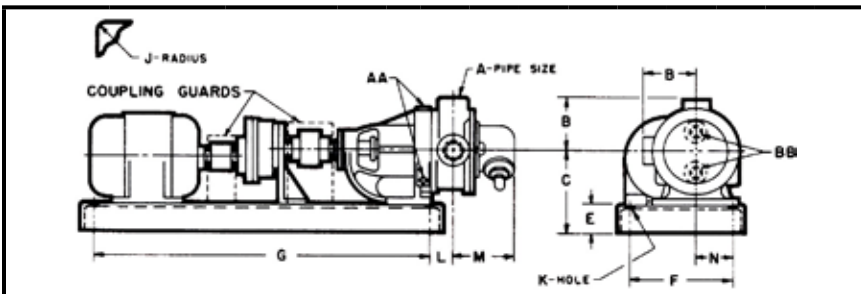
DIMENSIONS

These dimensions are average and not for construction purposes. Certified prints on request.



For specifications, see page 210.3.

DIMENSIONS — 724 AND 4724 SERIES ("R" DRIVE) "H"- "HL" SIZE "A" SIZE REDUCER UNIT



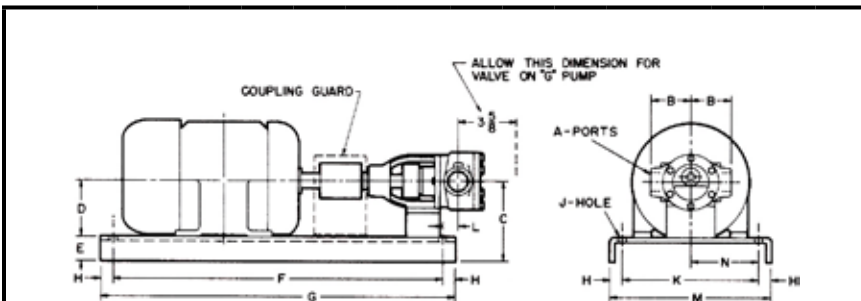
For specifications, see page 210.3.

DIMENSIONS — 724 AND 4724 SERIES ("R" DRIVE) "K"- "LL" SIZE "B" SIZE REDUCER UNIT

MODEL NUMBER													PIPE SIZE	
PACKED	SEAL	A	B	C	E	F	G	J	K	L	M	N	AA	BB
Ⓚ K724R	Ⓚ K4724R	2	5 1/8	9 1/2	4	14 1/4	48	1 3/8	5/8	2	6 7/8	4 1/4	3/4	1 1/4
Ⓚ KK724R	Ⓚ KK4724R	2	5 1/8	9 1/2	4	14 1/4	48	1 3/8	5/8	2	6 7/8	4 1/4	3/4	1 1/4
L724R	L4724R	2	6 1/2	11	4	14 1/4	48	1 3/8	5/8	2 3/8	7 1/8	4 5/8	1	1
LQ724R	LQ4724R	Ⓜ 2 1/2	7 3/16	11	4	14 1/4	48	1 3/8	5/8	2 3/8	7 1/8	4 5/8	1	1
LL724R	LL4724R	Ⓜ 3	7 3/16	11	4	14 1/4	48	1 3/8	5/8	2 3/8	7 5/8	4 5/8	1	1

Ⓚ With motor frames 184-T and smaller, these units are assembled on a shorter base with the following dimension changes: (F= 16, G = 39, L = 3, N = 5 5/8). Motor rails 1 1/8" high are required with 56, 143-T and 145-T frame motors.

Ⓜ Ports are suitable for use with 150# ANSI (ASA) companion flanges or flanged fittings. Motor frame larger than 256T requires larger base. Consult factory. Units available to accept 10 H.P., 1200 R.P.M. maximum motor.
NOTE: Motor rails 2" high are required on "L" thru "LL" size units with 184-T or 4 1/2" center height motors.



For specifications, see page 210.5.

DIMENSIONS — 724 AND 4724 SERIES ("D" DRIVE) "F"- "FH"- "G" SIZE

MODEL NUMBER														
PACKED	SEAL	A	B	C	D	E	F	G	H	J	K	L	M	N
F724D	F4724D	1/2	2	5	Ⓚ 3 1/2	1 1/2	20 1/2	22	3/4	1/2	8 1/2	15 1/16	10	4 1/4
FH724D	FH4724D	3/4	2		1 1/2	20 1/2	22	3/4	1/2	8 1/2	15 1/16	10	4 1/4	
G724D	G4724D	1	2 1/2		1 1/2	20 1/2	22	3/4	1/2	8 1/2	15 1/16	10	4 1/4	

Ⓚ For motor frames 56, 143-T, 145-T.

VIKING® HEAVY DUTY ALLOY PUMPS

SERIES 724 AND 4724

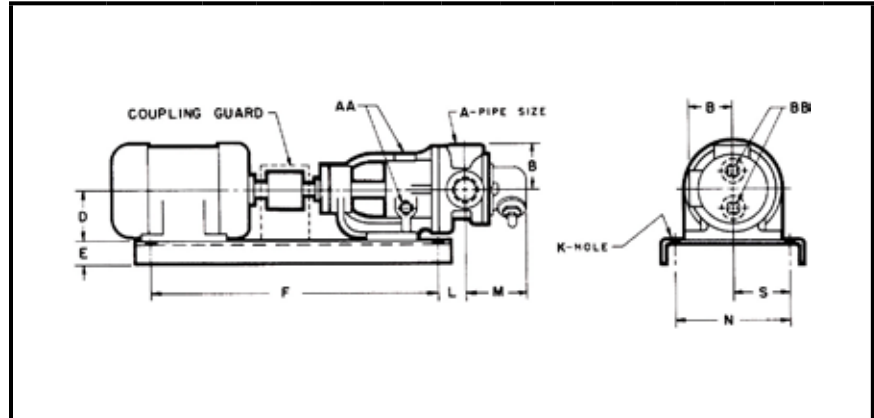
Section	210
Page	210.9
Issue	I

DIMENSIONS

These dimensions are average and not for construction purposes. Certified prints on request.

For specifications, see page 210.5.

DIMENSIONS — 724 AND 4724 SERIES ("D" DRIVE) "H"- "HL" SIZE

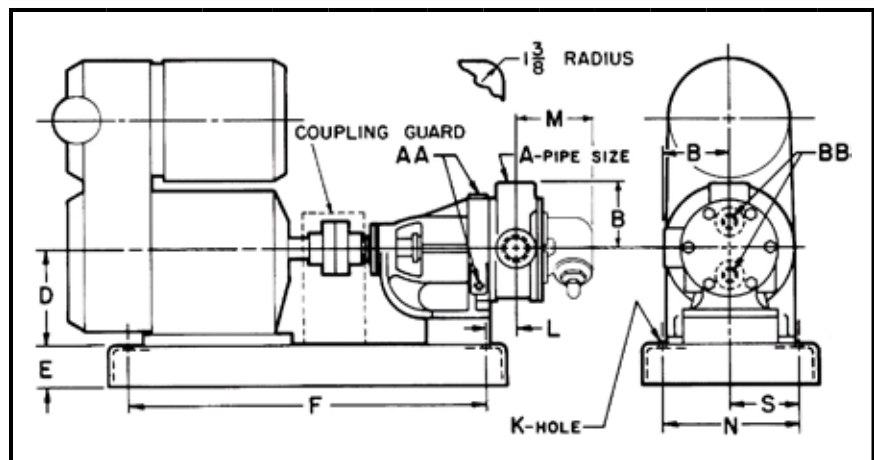


MODEL NUMBER		A	B	D	E	F	K	L	M	N	S	PIPE SIZE	
PACKED	SEAL											AA	BB
H724D OR HL724D	H4724D	1½	3½	⊕ 3½	1½	20½	½	1⅝	4¾	8½	4¼	½	¾
	OR	1½	3½	⊙ 4½	2⅙	25	⅑	⅞	4¾	9	4½	½	¾
	HL4724D	1½	3½	⊙ 5¼	2⅙	25	⅑	¾	4¾	9	4½	½	¾

- ① For motor frames 56, 143T and 145T.
- ② For motor frames 182, 182T, 184 and 184T.
- ③ For motor frames 213 thru 215-T.

For specifications, see page 210.5.

DIMENSIONS — 724 AND 4724 SERIES ("D" DRIVE) "K"- "LL" SIZE



MODEL NUMBER		A	B	⊙ D	E	F	K	L	M	N	S	PIPE SIZE	
PACKED	SEAL											AA	BB
K724D	K4724D	2	5⅝		4	39	⅝	3	6⅞	16	8	¾	1¼
KK724D	KK4724D	2	5⅝		4	39	⅝	3	6⅞	16	8	¾	1¼
L724D	L4724D	2	6½		4	39	⅝	3⅜	7⅞	16	8	1	1
LQ724D	LQ4724D	⊕ 2½	7⅜		4	39	⅝	3⅜	7⅞	16	8	1	1
LL724D	LL4724D	⊕ 3	7⅜		4	39	⅝	3⅜	7⅞	16	8	1	1

- ① Ports are suitable for use with 150# ANSI (ASA) companion flanges or flanged fittings.
- ② Varies with gearmotor used.

NOTE:

Pump units are normally placed on formed steel bases as shown with outside dimensions 4" x 18¾" x 41¾".

The size of the base is determined by the width of the motor and total length of the unit figured from the back of the motor foot to the end of the pump foot.

For foundation space estimates the following base dimensions can be used:

- 4" x 18¾" x 41¾" (Four ⅝" holes 16" x 39" centers)
- 4" x 17" x 50¾" (Four ⅝" holes 14¼" x 48" centers)
- 6" x 24" x 52" (Four ⅜" holes 21" x 49" centers)

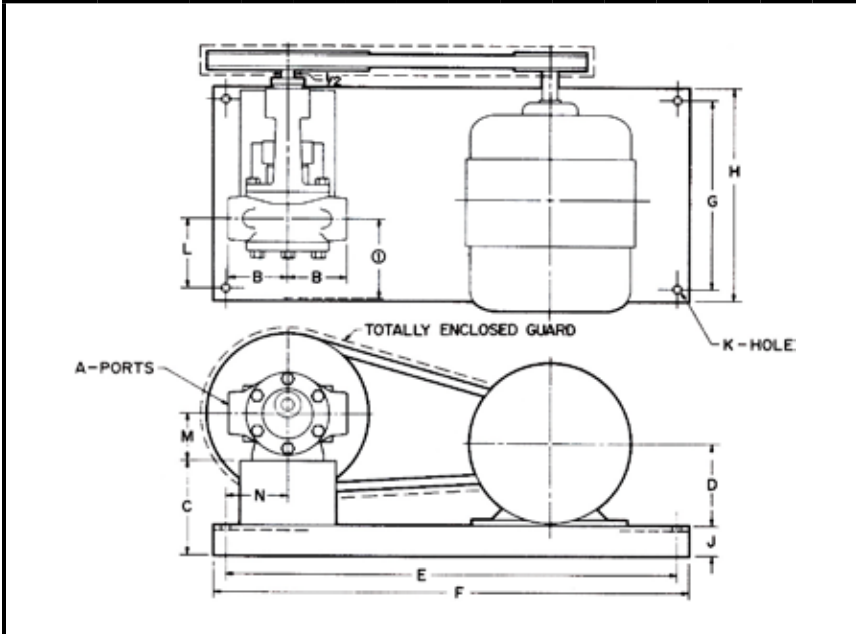
Section	210
Page	210.10
Issue	I

VIKING® HEAVY DUTY ALLOY PUMPS

SERIES 724 AND 4724

DIMENSIONS

These dimensions are average and not for construction purposes. Certified prints on request.



For specifications, see page 210.6.

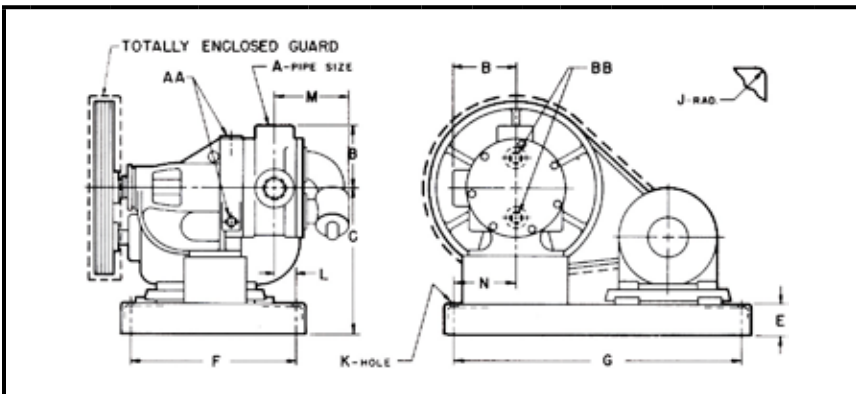
DIMENSIONS — 724 AND 4724 SERIES ("V" DRIVE) "F"-"FH"-"G" SIZE

MODEL NUMBER		A	B	C	ⓐ D	E	F	G	H	J	K	L	M	N
PACKED	SEAL													
F724V	F4724V	1/2	2											
FH724V	FH4724V	3/4	2	6 1/4		20 1/2	22	8 1/2	10	1 1/2	1/2	3 1/8	2	3
G724V	G4724V	1	2 1/2											

NOTE: Base dimension correct for all motors.

ⓐ Allow 3 5/8" for valve on "G" pump.

ⓑ Varies with motor used.



For specifications, see page 210.6.

DIMENSIONS — 724 AND 4724 SERIES ("V" DRIVE) "H"-"LL" SIZE

MODEL NUMBER		A	B	C	E	F	G	J	K	L	M	N	PIPE SIZE	
PACKED	SEAL												AA	BB
ⓐ H724V	H4724V	1 1/2	3 1/2	9 1/4	1 3/4	14 3/4	23 3/4	3/4	1/2	5	4 3/16	4 1/4	1 1/2	3/4
ⓐ HL724V	HL4724V	1 1/2	3 1/2	9 1/4	1 3/4	14 3/4	23 3/4	3/4	1/2	5	4 3/16	4 1/4	1 1/2	3/4
ⓐ K724V	K4724V	2	5 1/8	13 19/16	3 1/4	17	28 3/4	1	1/2	2 1/2	6 7/8	5 1/4	3/4	1 1/4
ⓐ KK724V	KK4724V	2	5 1/8	13 19/16	3 1/4	17	28 3/4	1	1/2	2 1/2	6 7/8	5 1/4	3/4	1 1/4
ⓐ L724V	L4724V	2	6 1/2	15 9/16	3 1/4	17	28 3/4	1	1/2	2 1/4	7 1/8	5 1/4	1	1
ⓐ LQ724V	LQ4724V	ⓐ 2 1/2	7 3/16	15 5/16	3 1/4	17	28 3/4	1	1/2	2 1/4	7 1/8	5 1/4	1	1
ⓐ LL724V	LL4724V	ⓐ 3	7 3/16	15 5/16	3 1/4	17	28 3/4	1	1/2	2 1/4	7 5/8	5 1/4	1	1

ⓐ Ports are suitable for use with 150# ANSI (ASA) companion flanges or flanged fittings.

ⓑ Base dimensions correct for all motors.

ⓒ Base dimensions correct thru frame 215T motors. Larger motors require larger base.

VIKING® HEAVY DUTY ALLOY PUMPS

SERIES 724 AND 4724

Section	210
Page	210.11
Issue	I

Performance Curve Notes

Printed performance curves are not available.

Performance curves can be electronically generated with the Viking Pump Selector Program. This program can be located on www.vikingpump.com for the general public.

For authorized distributors, this program can be found listed under the “Products” tab at www.idexconnect.com. Security passwords are required to access IDEXconnect.