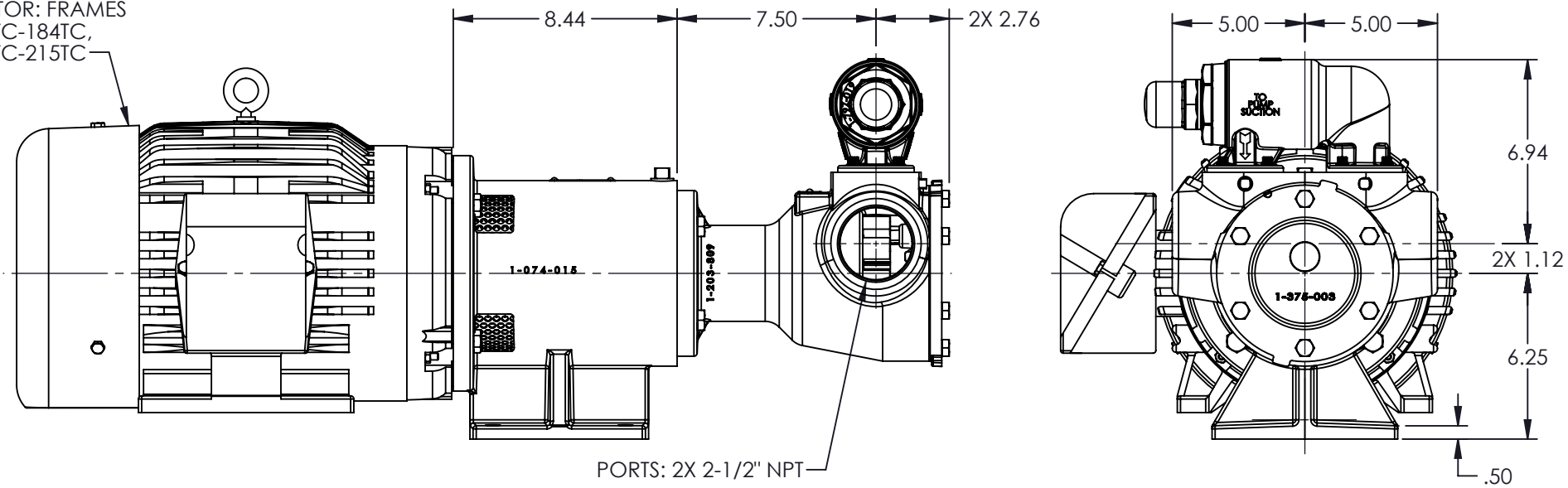
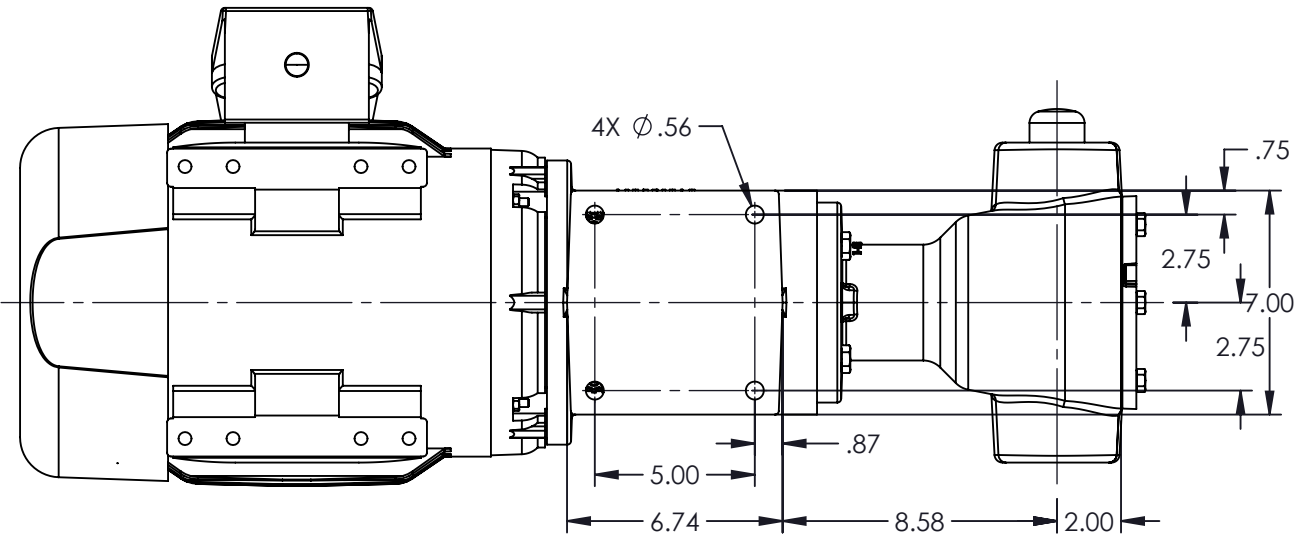


MOTOR: FRAMES
182TC-184TC,
213TC-215TC



PORTS: 2X 2-1/2" NPT



STANDARD MODELS:
AS895-MDB15-M, AK895-MDB15-M,
AS895-MDB40-M, AK895-MDB40-M

NOTES:
1. ALL DIMENSIONS ARE FOR REFERENCE ONLY.

STATE	Released	11/18/2019	DIMENSIONS ARE IN INCHES
DRAWN	sjakel	04/05/2016	
CHECKED	DTL	11/18/2019	



VIKING PUMP, INC.
A Unit of IDEX Corporation
Cedar Falls, IA 50613
U.S.A.

THIS DRAWING IS THE PROPERTY OF
VIKING PUMP, INC. AND IS PROPRIETARY
IN GENERAL AND DETAIL. IT SHALL NOT BE
COPIED OR ITS CONTENTS REVEALED TO
OUTSIDE PARTIES WITHOUT THE WRITTEN
CONSENT OF VIKING PUMP, INC.

3D

DWG. NO.
AV-591

SHEET 1 OF 1

REV. G.0
11/18/2019