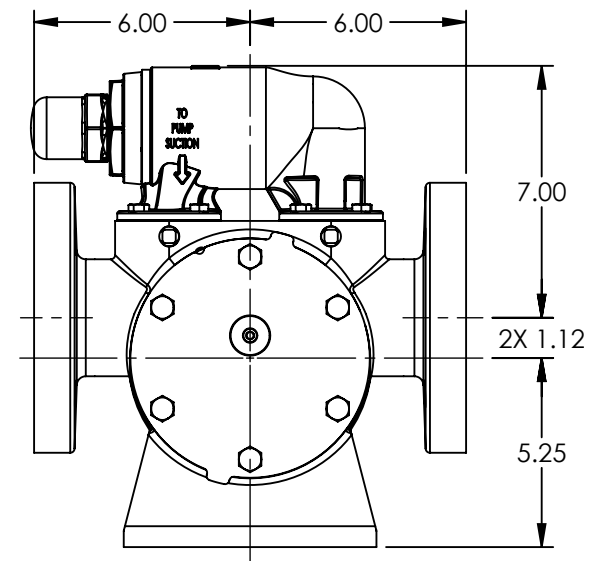


PORTS: 2X 3" FLANGES
SUITABLE FOR USE WITH
CLASS 150 ANSI FLANGES



NOTES:
1. ALL DIMENSIONS ARE FOR REFERENCE ONLY.

STANDARD MODELS: AS4197, AK4197

STATE	Released	05/23/2019
DRAWN	sjakel	05/02/2019
CHECKED	BAM	05/23/2019

DIMENSIONS ARE IN INCHES	
PROJECT:	
WAS:	



VIKING PUMP, INC.
A Unit of IDEX Corporation
Cedar Falls, IA 50613
U.S.A.

THIS DRAWING IS THE PROPERTY OF VIKING PUMP, INC. AND IS PROPRIETARY IN GENERAL AND DETAIL. IT SHALL NOT BE COPIED OR ITS CONTENTS REVEALED TO OUTSIDE PARTIES WITHOUT THE WRITTEN CONSENT OF VIKING PUMP, INC.

3D

DWG. NO.
AV-812

SHEET 1 OF 1

REV. D.0

05/23/2019