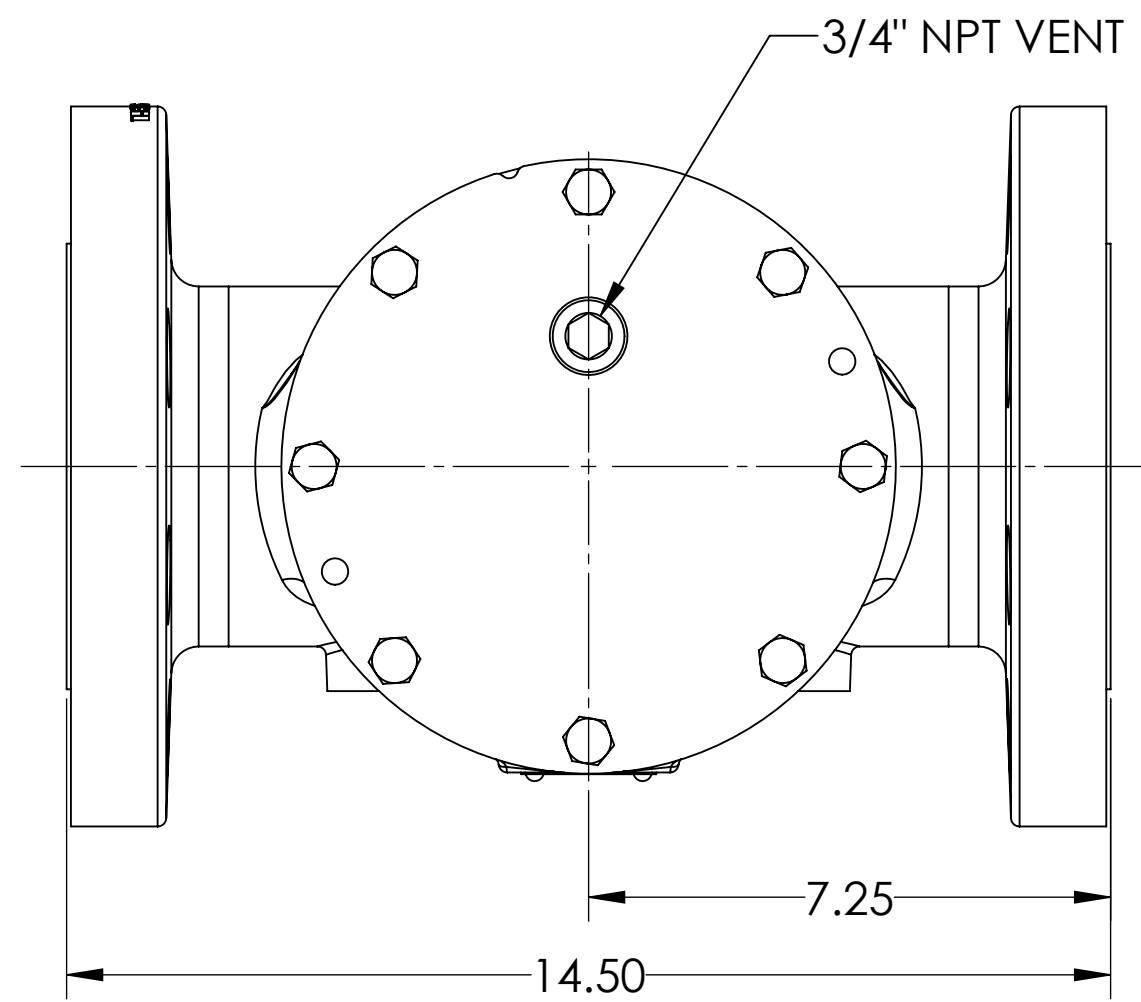
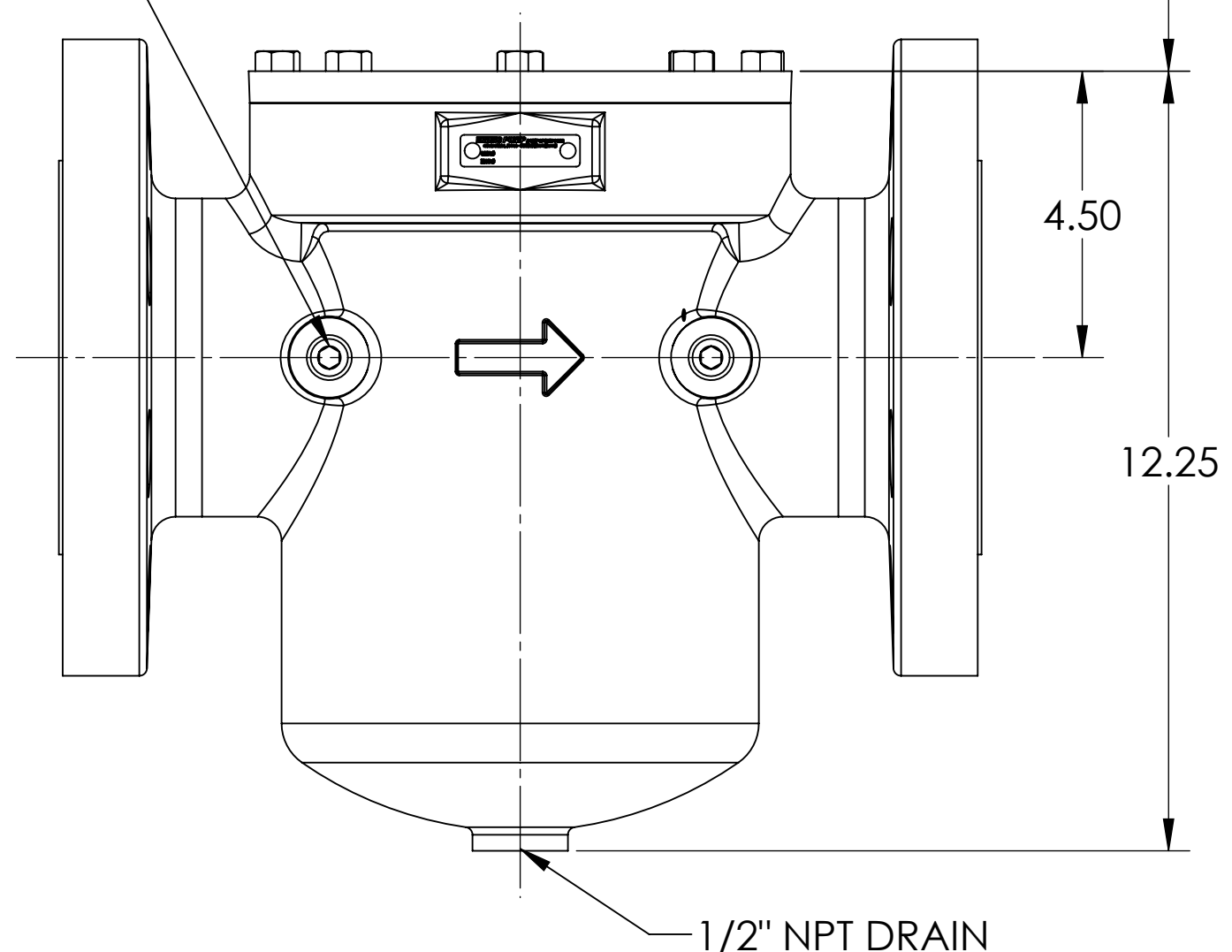


REVISIONS			
REV.	DESCRIPTION	ECN	DATE
A.0	1. CREATED PER E184		10/15/2015
B.0	1. UPDATED PER ECN. NO DIMENSIONAL CHANGES	00767	1/18/2016

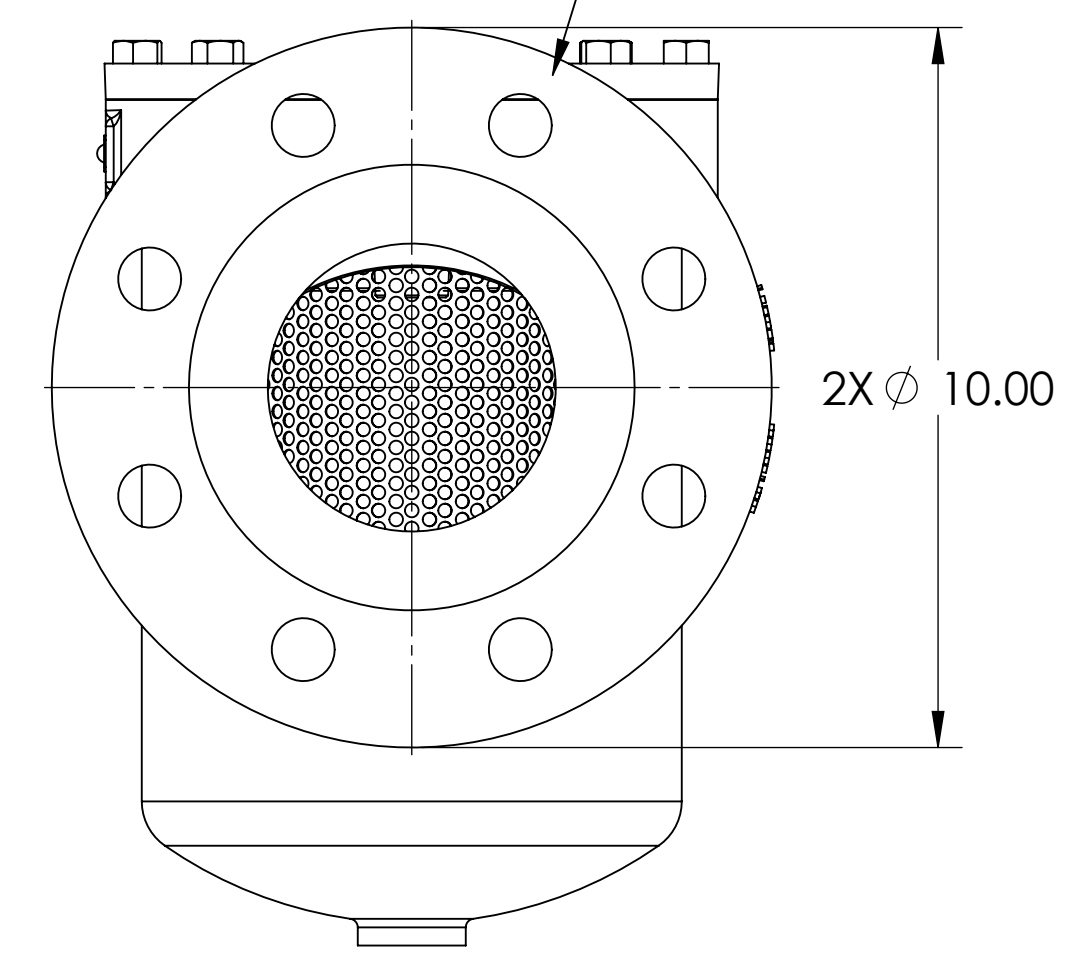


CLEARANCE REQUIRED FOR BASKET REMOVAL

2X 3/8" NPT PORTS



PORTS: 4" CLASS 300 RAISED FACE FLANGES - OPPOSITE



MESH	10	20	40	60	80	100	USE AND RELATED INFORMATION
OPENING (INCHES)	.075	.034	.015	.0092	.007	.0055	
OPENING (MICRONS)	1910	860	380	230	190	140	MATERIAL: SEE PARTS FOR MATERIAL SPEC
							WAS:

UNLESS OTHERWISE SPECIFIED DIMENSIONS ARE IN **INCHES**.  
 INTERPRET DIM AND TOLERANCES PER VIKING PUMP ES-47  
 BREAK EDGES .005-.015 RADIUS OR CHAMFER  
 .XX ±.02 .XXX ±.005 ANGLES ±1°  
 ALL FINISHED SURFACES  $\nabla_{250}$  (AA .030 CUTOFF)  
 ACCEPTABILITY OF SCREW THREADS SHALL BE DETERMINED BASED ON SYSTEM 21 ASME B1.3  
 THIRD ANGLE PROJECTION

STATE	Released	01/25/2016
DRAWN	jpierce	10/15/2015
CHECKED	SMM	01/18/2016
PROJECT	E184	
SCALE:	3:8	
CASTING NUMBER		
	<b>3D</b>	WEIGHT: 99.28LBS

**VIKING PUMP**  
 VIKING PUMP, INC.  
 A Unit of IDEX Corporation  
 Cedar Falls, IA 50613  
 U.S.A.

THIS DRAWING IS THE PROPERTY OF VIKING PUMP, INC. AND IS PROPRIETARY IN GENERAL AND DETAIL. IT SHALL NOT BE COPIED OR ITS CONTENTS REVEALED TO OUTSIDE PARTIES WITHOUT THE WRITTEN CONSENT OF VIKING PUMP, INC.

STRAINER ASSEMBLY, 4" CLASS 300 OPPOSITE FLANGED PORTS, BOLT ON LID

SIZE DWG. NO. SHEET 1 OF 1 REV  
**CF-1040-H** B.0