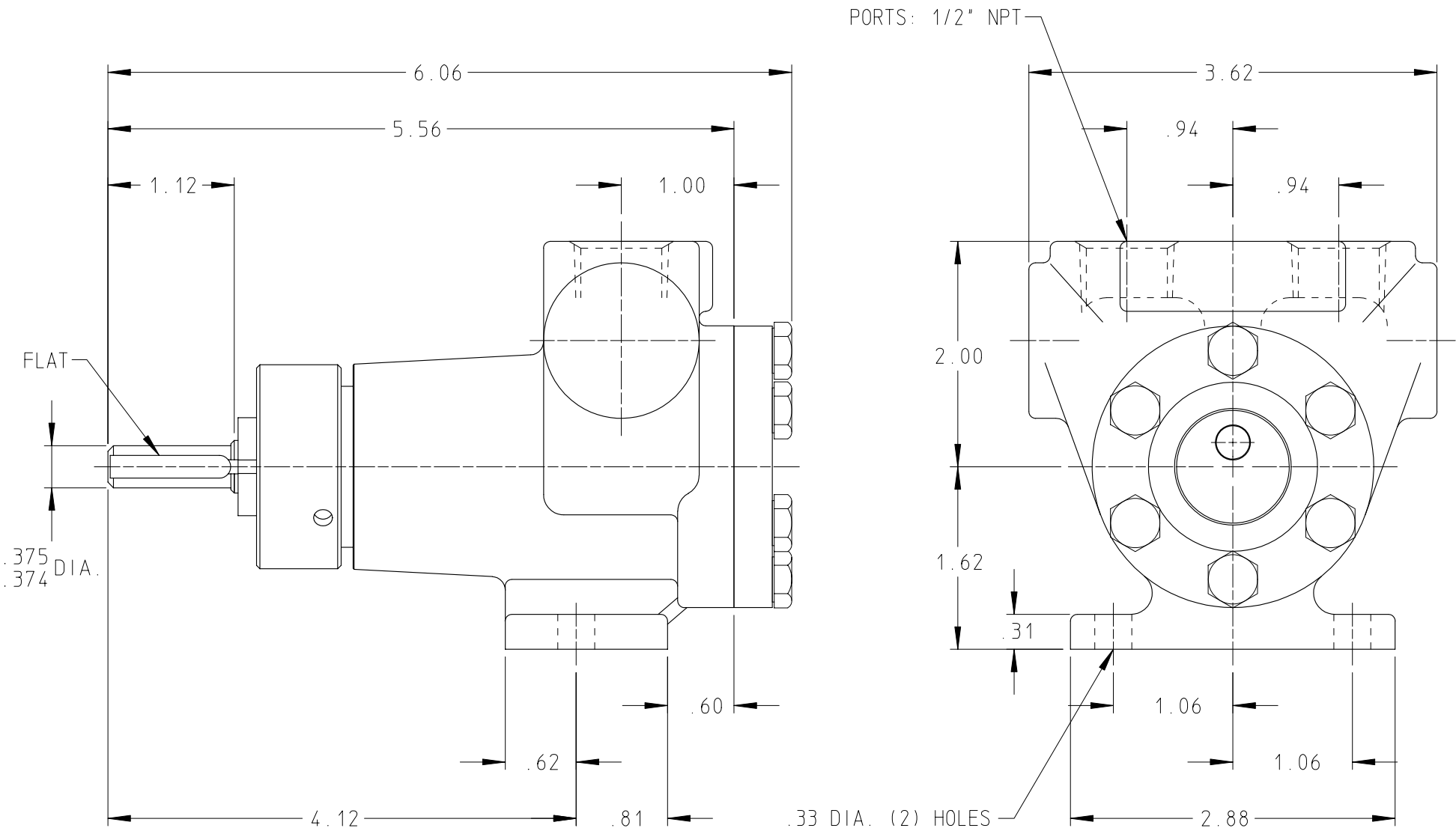


DRAWING NO.
FV-968



STANDARD MODELS: F4625, FH4625

DRAWN KROGMANN DATE 21 JUL 2003
 CHECKED SJJ DATE 22 JUL 2003

THIS DRAWING IS THE PROPERTY OF VIKING PUMP INC. AND IS PROPRIETARY IN GENERAL AND DETAIL. IT SHALL NOT BE COPIED OR ITS CONTENTS REVEALED TO OUTSIDE PARTIES WITHOUT THE WRITTEN CONSENT OF VIKING PUMP INC.

VIKING PUMP
 VIKING PUMP, INC.
 A Unit of IDEX Corporation
 Cedar Falls, Iowa 50613
 U.S.A.

DRAWING NO.
FV-968

REV. B
 18 SEP 2003