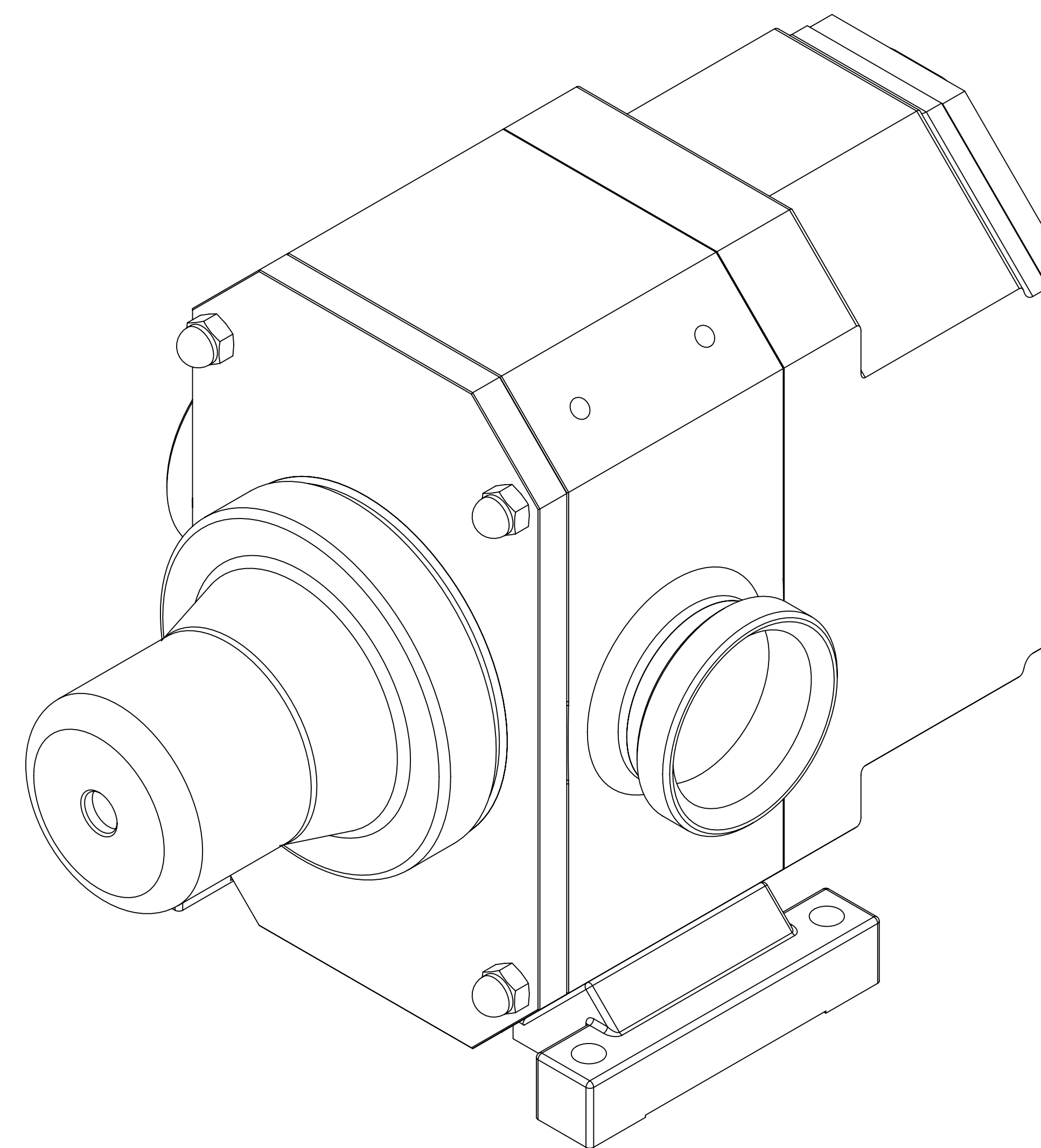


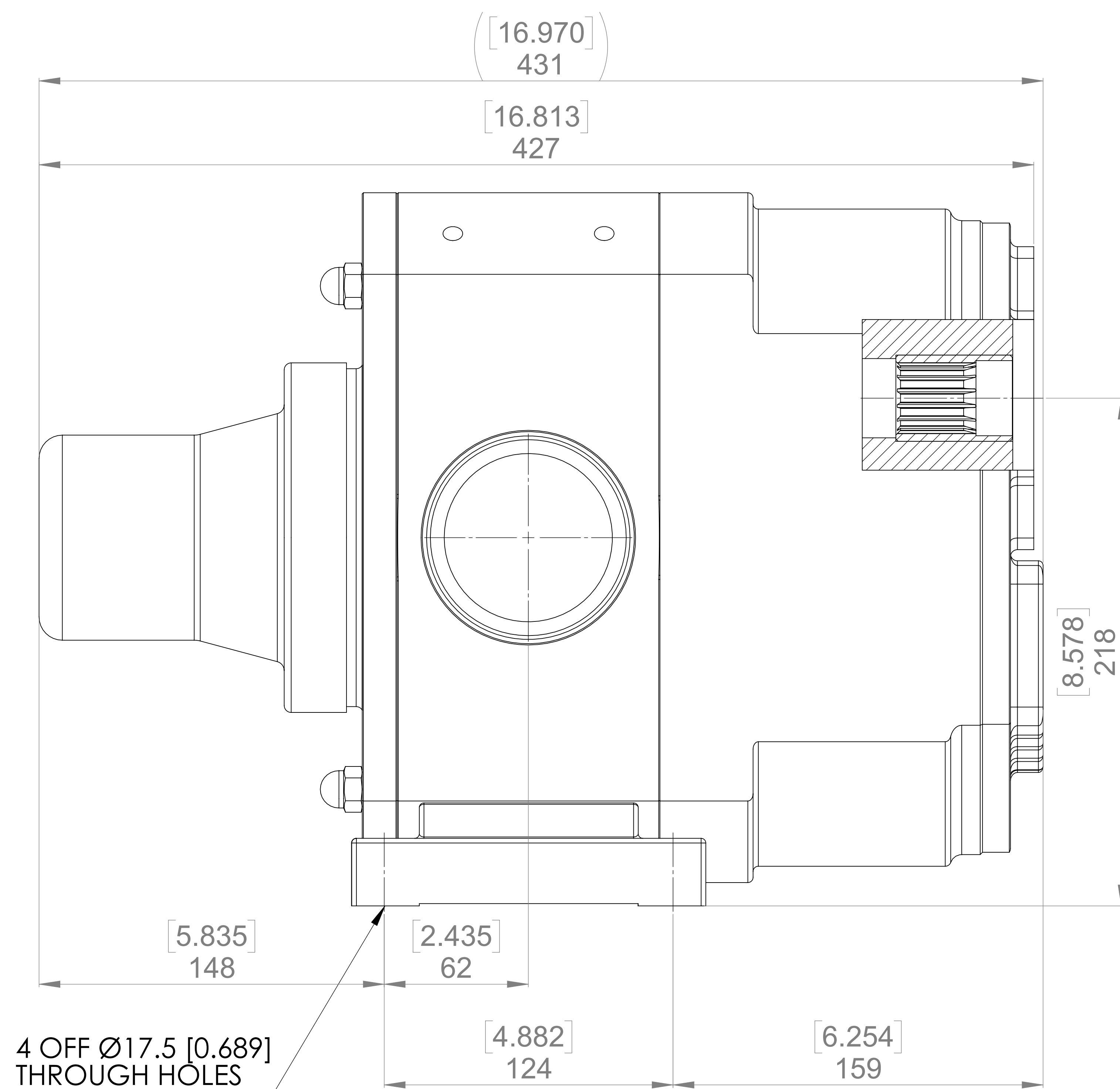
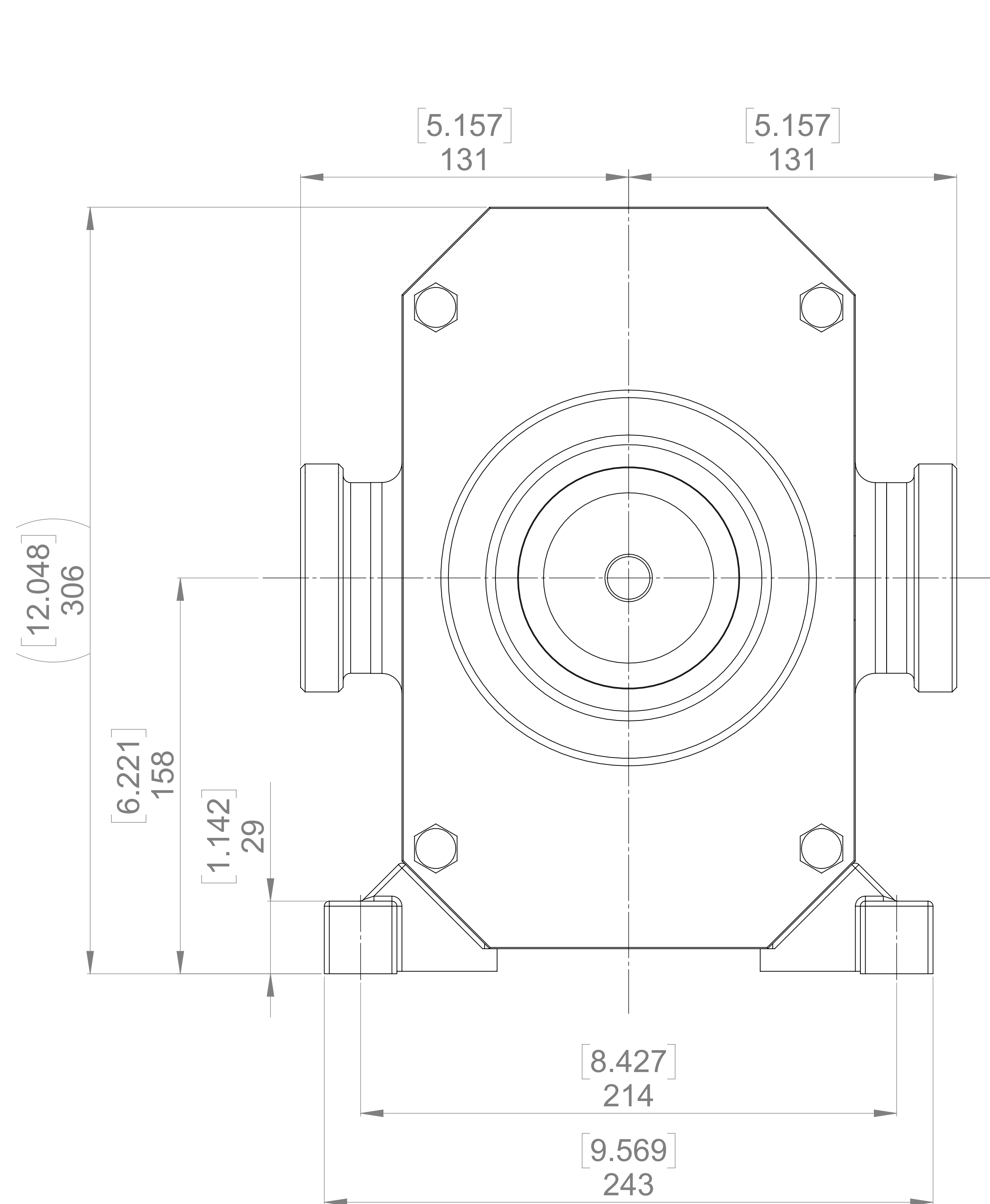
**GENERAL ARRANGEMENT DETAILS**

**PUMP INFORMATION**

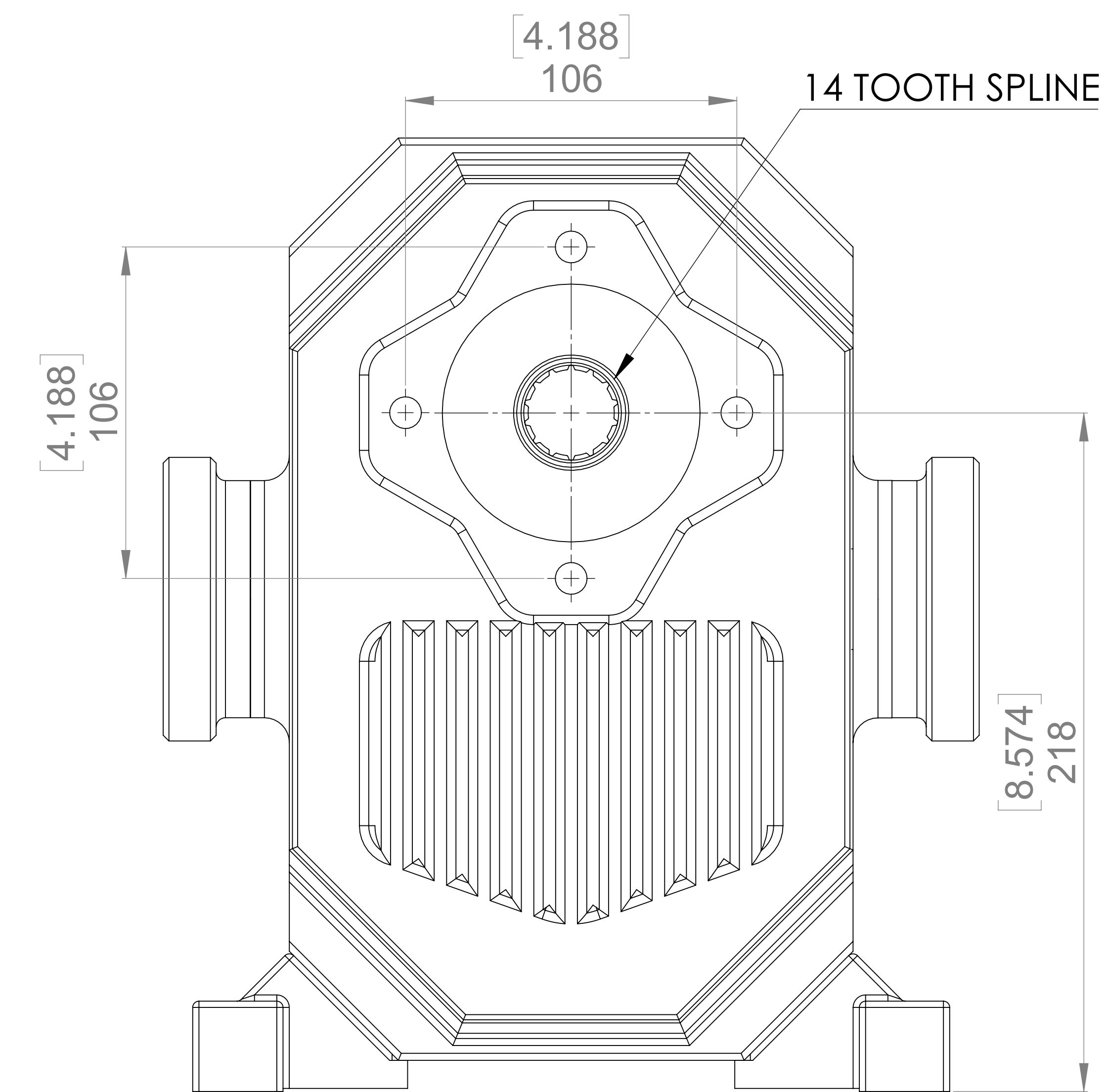
PUMP MODEL	RTP30/0128
LEFT/TOP CONNECTION	3" BEVEL/ACME/IAMD
RIGHT/BOTTOM CONNECTION	3" BEVEL/ACME/IAMD
DRIVE SHAFT POSITION	TOP SHAFT DRIVE
FRONT COVER ADDITIONS	SPRING PRV
ROTORCASE ADDITIONS	NONE
GEARBOX ADDITIONS	NONE
PUMP ADDITIONS	NONE



THIS IS NOT A CERTIFIED DRAWING, USE FOR GENERAL INSTALLATION ONLY



4 OFF Ø17.5 [0.689] THROUGH HOLES



ADDED DUAL DIMENTION AND REAR VEIW	B	23/02/2024
ISSUED	A	21/05/2015
AMENDMENT	ISSUE	DATE

<p>VIKING PUMP HYGIENIC LTD. HIGHFIELD INDUSTRIAL ESTATE, EASTBOURNE, EAST SUSSEX, BN23 6PT TEL: (+44) 1323 509211</p>	<p><b>COPYRIGHT:</b> THIS DRAWING IS THE SOLE PROPERTY OF VIKING PUMP HYGIENIC LTD. IT MUST NOT BE COPIED OR USED IN PART OR FULL WITHOUT PRIOR WRITTEN CONSENT.</p>	<p>UNLESS OTHERWISE STATED: ALL DIMENSIONS ± 2.50 ANGLES ± 2.0° DO NOT SCALE THIS DRAWING REMOVE BURRS AND SHARP EDGES DIMENSIONS IN MILLIMETRES <b>IF IN DOUBT ASK</b></p>	PROJECTION	DRAWN	CHECKED	TITLE:
				KCB	IP-JB	GENERAL ARRANGEMENT
						DRG. NO:
						<b>GA3079</b>