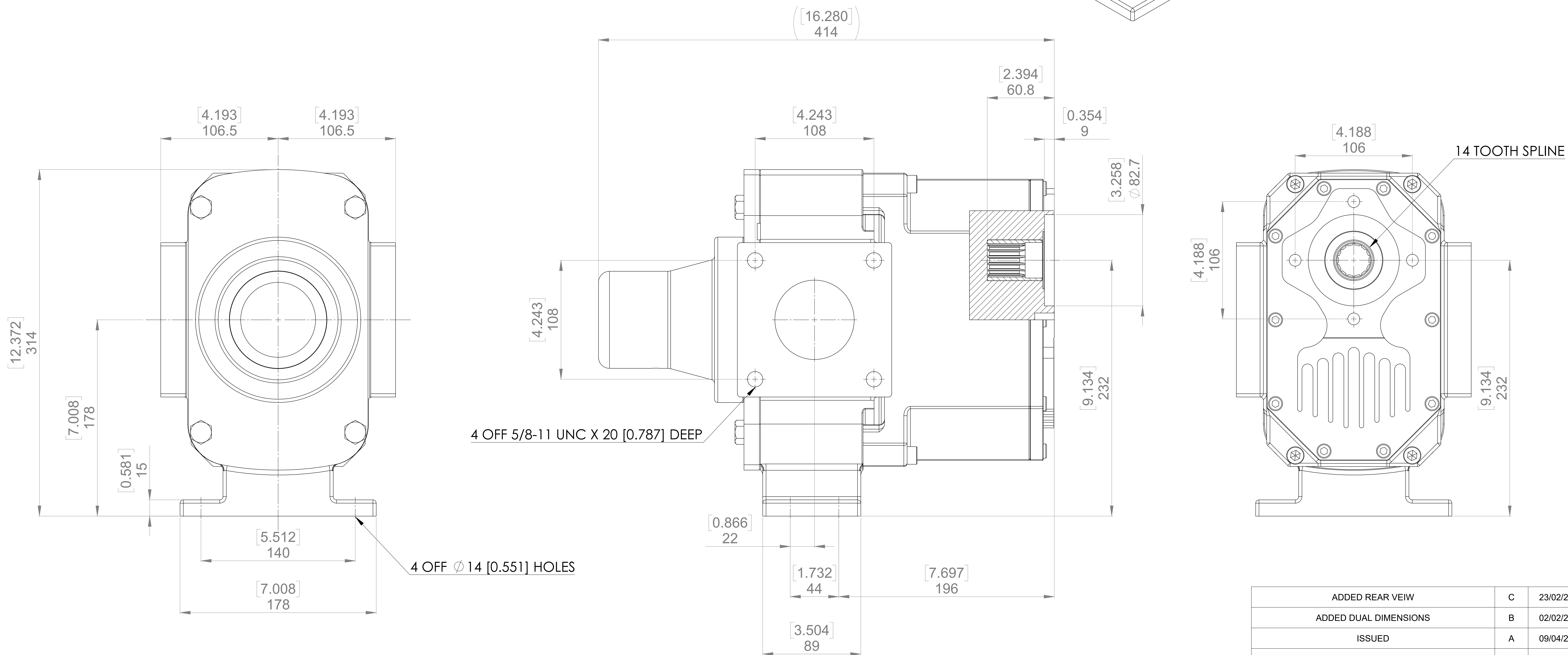
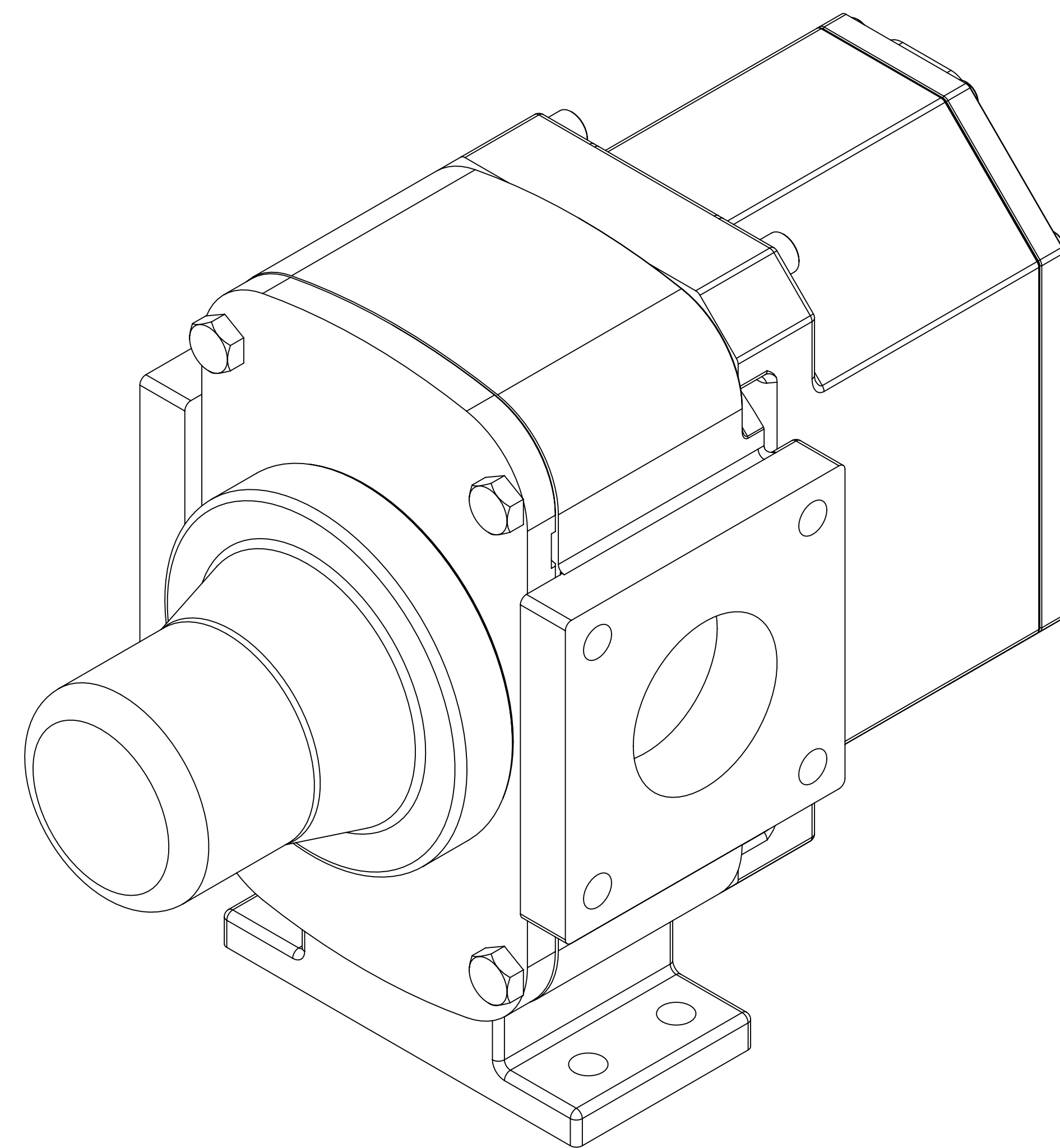


GENERAL ARRANGEMENT DETAILS

PUMP INFORMATION

PUMP MODEL	RTP RTPe20/0100
LEFT/TOP CONNECTION	3" ASA/ANSI 150 LB RF
RIGHT/BOTTOM CONNECTION	3" ASA/ANSI 150 LB RF
DRIVE SHAFT POSITION	TOP SHAFT DRIVE
FRONT COVER ADDITIONS	SPRING PRESSURE RELIEF VALVE
ROTORCASE ADDITIONS	5/8-11 UNC BOLTING HOLES
GEARBOX ADDITIONS	STANDARD
PUMP ADDITIONS	STANDARD

THIS IS NOT A CERTIFIED DRAWING, USE FOR GENERAL INSTALLATION ONLY



ADDED REAR VEIW	C	23/02/2024
ADDED DUAL DIMENSIONS	B	02/02/2024
ISSUED	A	09/04/2021
AMENDMENT	ISSUE	DATE

VIKING PUMP
HYGIENIC
HIGHFIELD INDUSTRIAL ESTATE,
EASTBOURNE,
EAST SUSSEX, BN23 6PT
TEL: (+44) 1323 509211

COPYRIGHT:
THIS DRAWING IS THE SOLE
PROPERTY OF
VIKING PUMP HYGIENIC LTD.
IT MUST NOT BE COPIED OR USED
IN PART OR FULL WITHOUT PRIOR
WRITTEN CONSENT.

UNLESS OTHERWISE STATED:
ALL DIMENSIONS ± 2.50
ANGLES ± 2.0°
DO NOT SCALE THIS DRAWING
REMOVE BURRS AND SHARP EDGES
DIMENSIONS IN MILLIMETRES
IF IN DOUBT ASK

PROJECTION	DRAWN	CHECKED
	MEW	KCB

TITLE:	GENERAL ARRANGEMENT
DRG. NO:	GA4576