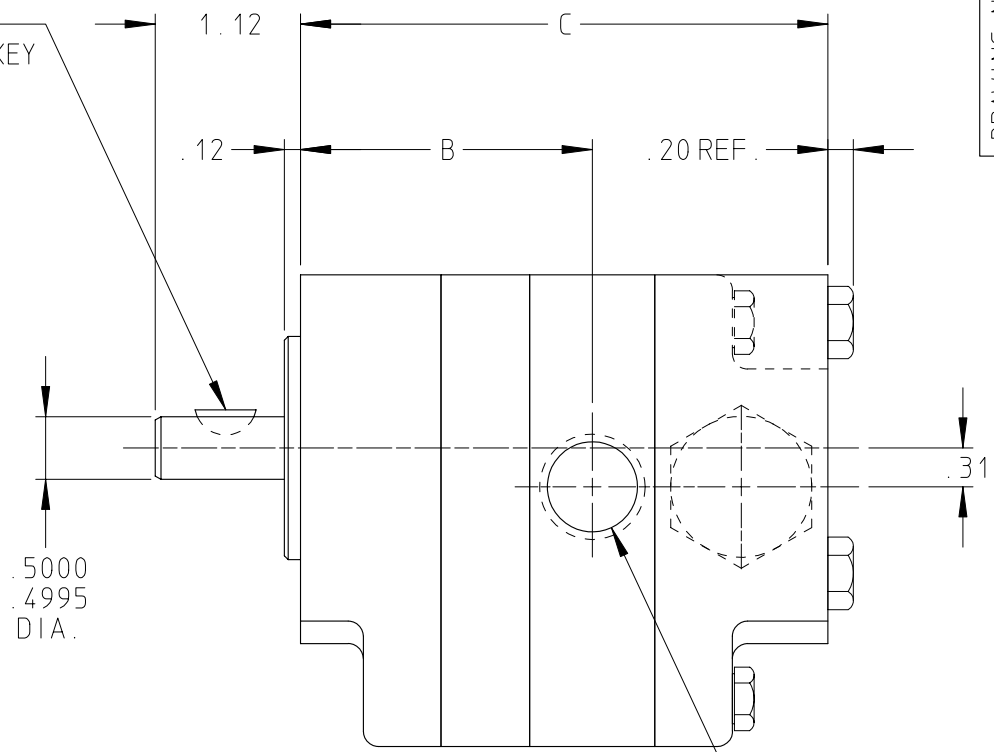


NO. 404
WOODRUFF KEY



PORTS: 1/2" NPT
(2) OPPOSITE

MODEL NO.	B	C
SG-0518	1.80	3.68
SG-0525	1.87	3.75
SG-0535	1.97	3.85
SG-0550	2.12	4.00
SG-0570	2.32	4.20

NOTE: VALVE IS SHOWN CORRECT FOR CLOCKWISE ROTATION, VALVE ON OPPOSITE SIDE FOR COUNTER CLOCKWISE ROTATION.

STANDARD MODELS: SG-05__-G0V, SG-05__G1V

DRAWN JASON DATE 19 MAY 1995
CHECKED DC DATE 22 MAY 1995

THIS DRAWING IS THE PROPERTY OF VIKING PUMP INC. AND IS PROPRIETARY IN GENERAL AND DETAIL. IT SHALL NOT BE COPIED OR ITS CONTENTS REVEALED TO OUTSIDE PARTIES WITHOUT THE WRITTEN CONSENT OF VIKING PUMP INC.

VIKING PUMP
VIKING PUMP, INC.
A Unit of IDEX Corporation
Cedar Falls, Iowa 50613
U.S.A.

DRAWING NO.
GPV-0518-136

REV. C
22 OCT 2003