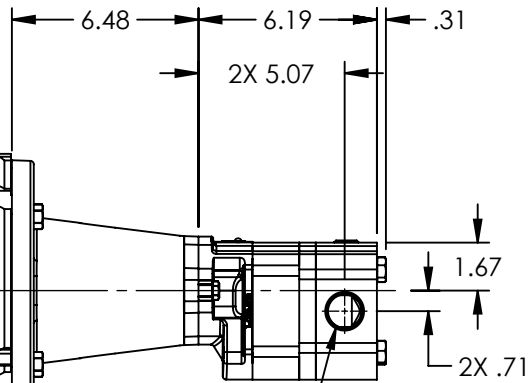
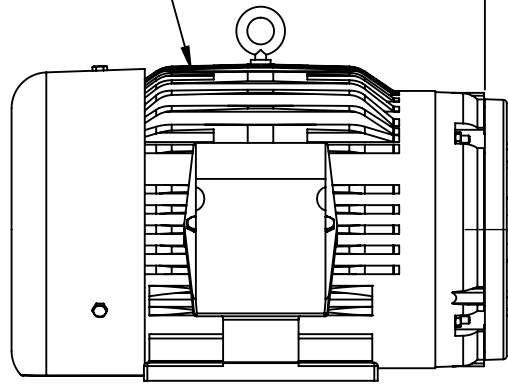
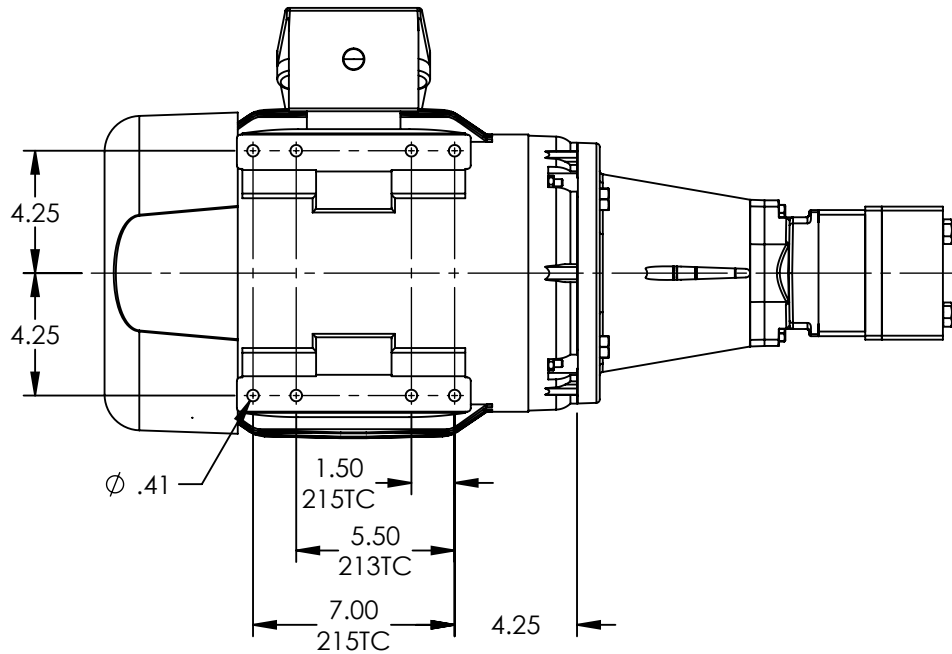
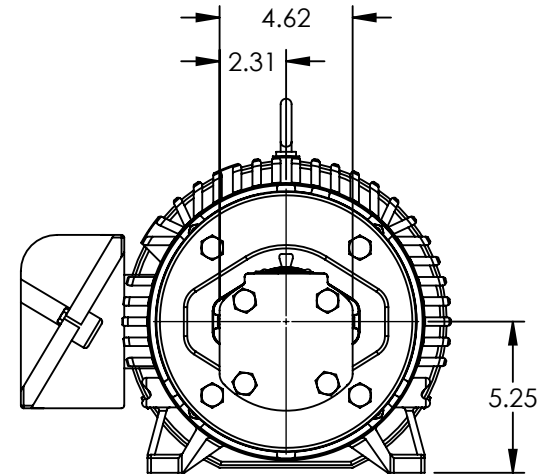


MOTOR: FRAMES  
213TC-215TC



PORTS: 2X 1" NPT  
OPPOSITE



STANDARD MODELS: GL-40758-G0A-M, GL-40758-G1A-M, GL-40758-G0B-M, GL-40758-G1B-M

NOTES:  
1. ALL DIMENSIONS ARE FOR REFERENCE ONLY.

STATE	Released	03/28/2019
DRAWN	cmihm	10/5/2018
CHECKED	JDP	03/28/2019

DIMENSIONS ARE IN  
INCHES  
PROJECT: E299  
WAS:



VIKING PUMP, INC.  
A Unit of IDEX Corporation  
Cedar Falls, IA 50613  
U.S.A.

THIS DRAWING IS THE PROPERTY OF  
VIKING PUMP, INC. AND IS PROPRIETARY  
IN GENERAL AND DETAIL. IT SHALL NOT BE  
COPIED OR ITS CONTENTS REVEALED TO  
OUTSIDE PARTIES WITHOUT THE WRITTEN  
CONSENT OF VIKING PUMP, INC.

3D

DWG. NO. GPV-0758-82

SHEET 1 OF 1

REV. A.0

03/28/2019