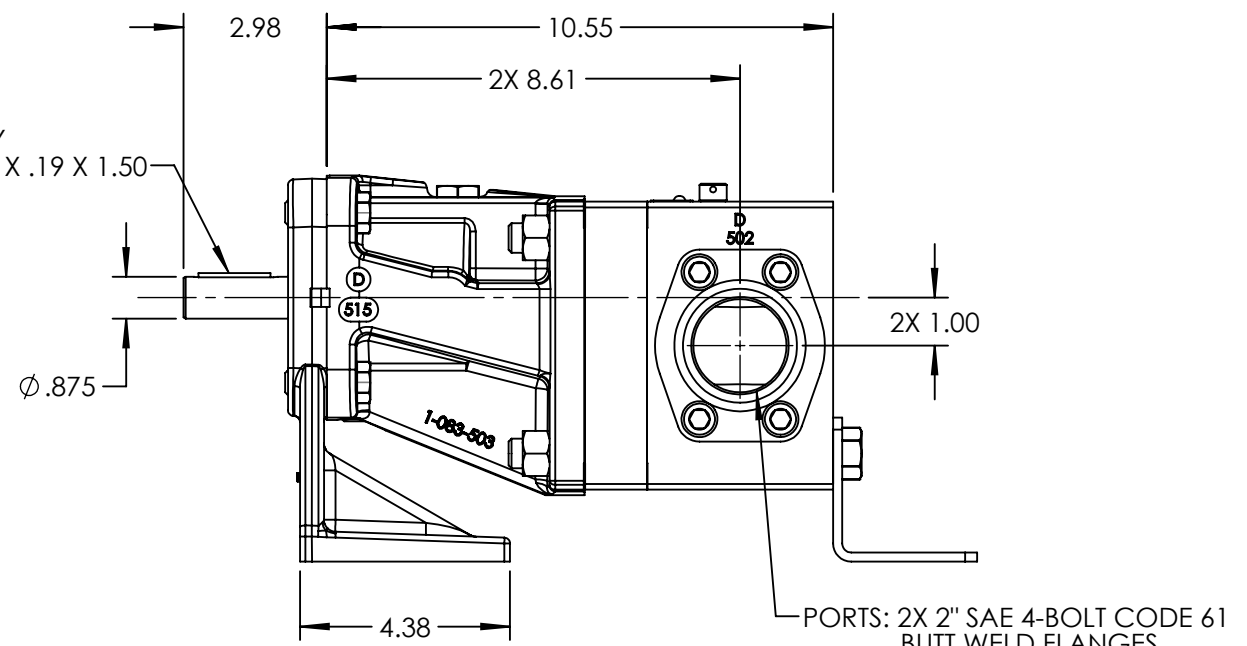


KEY
.19 X .19 X 1.50



PORTS: 2X 2" SAE 4-BOLT CODE 61 BUTT WELD FLANGES OPPOSITE

MODELS: GP-41013-G00-B, GP-41013-G10-B

NOTES:
1. ALL DIMENSIONS ARE FOR REFERENCE ONLY.

STATE	Released	09/28/2016	DIMENSIONS ARE IN INCHES	VIKING PUMP	VIKING PUMP, INC. A Unit of IDEX Corporation Cedar Falls, IA 50613 U.S.A.	THIS DRAWING IS THE PROPERTY OF VIKING PUMP, INC. AND IS PROPRIETARY IN GENERAL AND DETAIL. IT SHALL NOT BE COPIED OR ITS CONTENTS REVEALED TO OUTSIDE PARTIES WITHOUT THE WRITTEN CONSENT OF VIKING PUMP, INC.	3D	DWG. NO. GPV-1013-014-U	SHEET 1 OF 1	REV. A.0
DRAWN	jpierce	9/27/2016								PROJECT: E163
CHECKED	CJM	09/27/2016	WAS:							