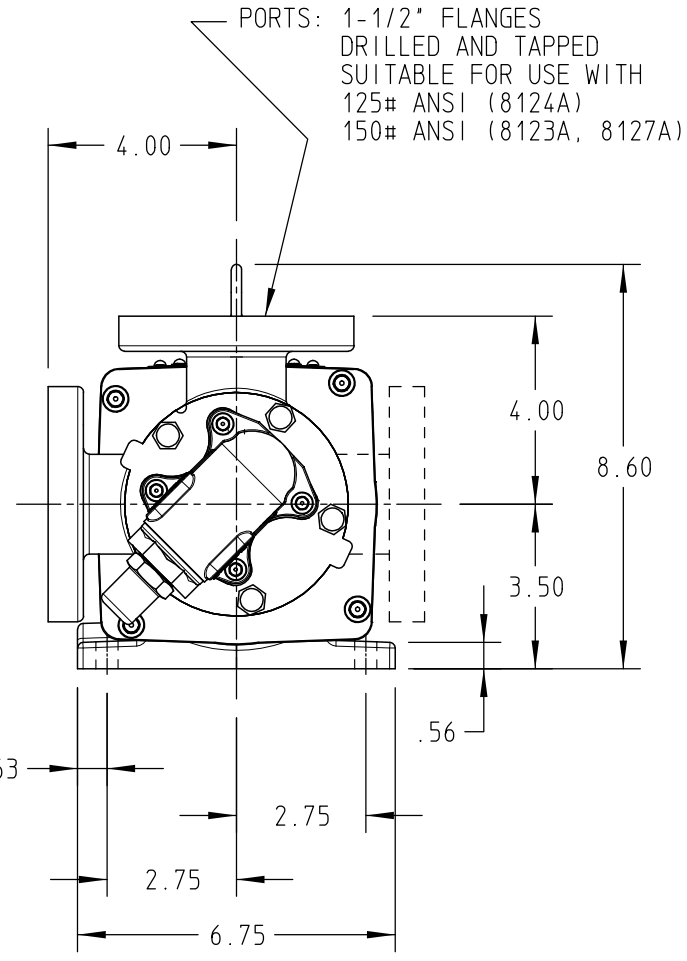
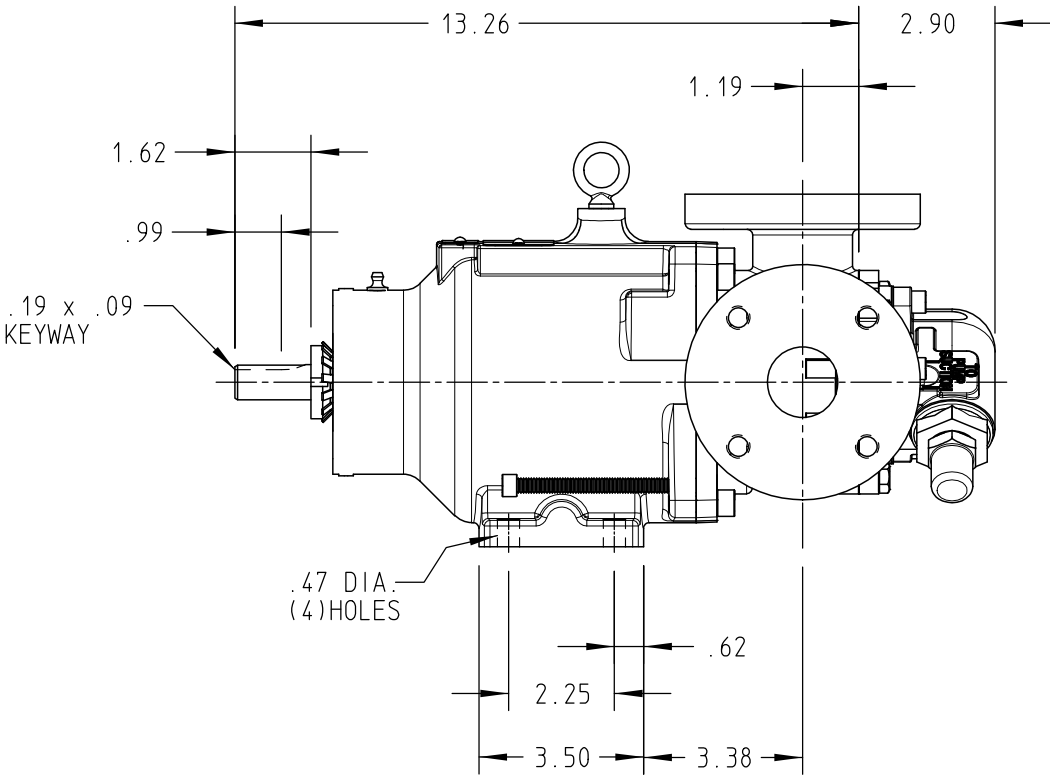
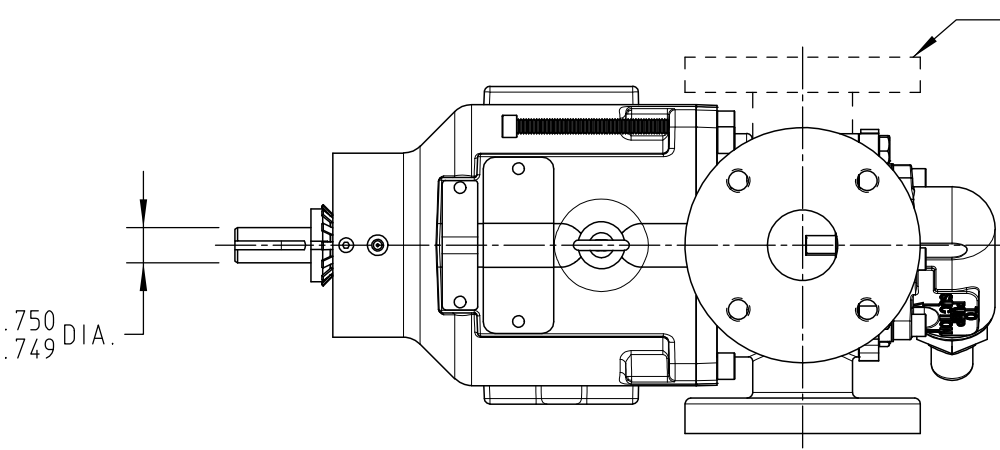


DRAWING NO.
HV-3679



STANDARD MODELS: H8123A, HL8123A, H8127A, HL8127A
 MODELS WITH OPTIONAL FLANGED PORTS: H8124A, HL8124A

DRAWN MILLER, S DATE 07 MAR 2008
 CHECKED SMM DATE 10 MAR 2008

THIS DRAWING IS THE PROPERTY OF VIKING PUMP INC. AND IS PROPRIETARY IN GENERAL AND DETAIL. IT SHALL NOT BE COPIED OR ITS CONTENTS REVEALED TO OUTSIDE PARTIES WITHOUT THE WRITTEN CONSENT OF VIKING PUMP INC.



VIKING PUMP, INC.
 A Unit of IDEX Corporation
 Cedar Falls, Iowa 50613
 U.S.A.

DRAWING NO.
HV-3679

OS DESIGNER

REV. D

09 DEC 2009