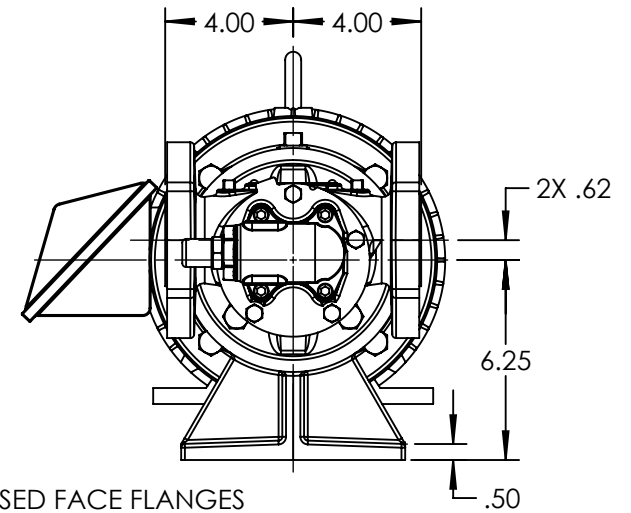
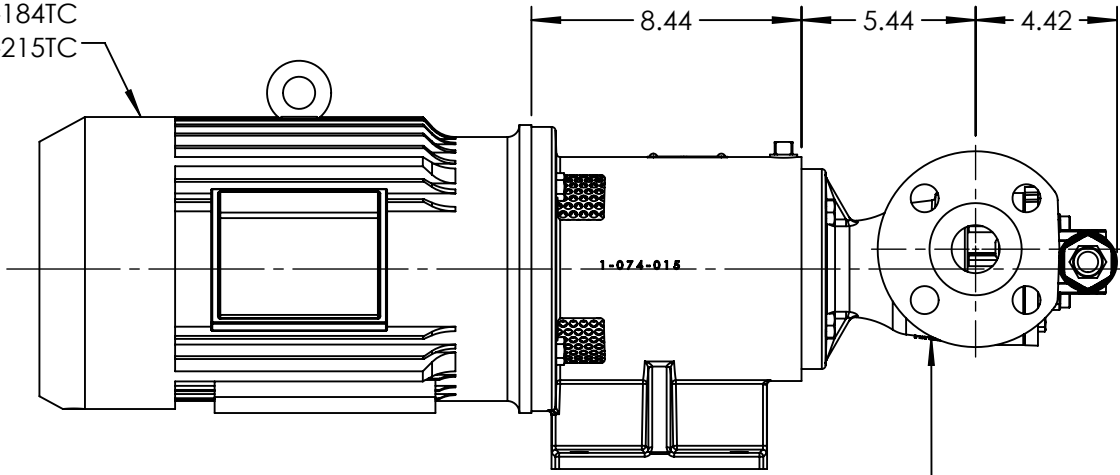
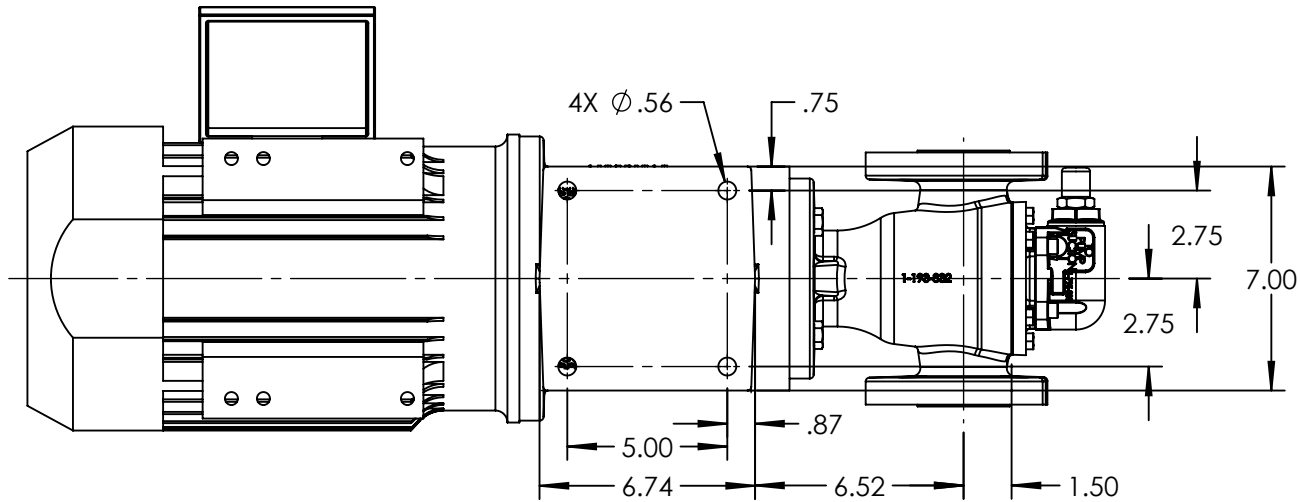


MOTOR: FRAMES
182TC-184TC
213TC-215TC



PORTS: 2X 1-1/2" RAISED FACE FLANGES
SUITABLE FOR USE WITH
CLASS 300 ANSI FLANGES



NOTES:

1. ALL DIMENSIONS ARE FOR REFERENCE ONLY.

STANDARD MODELS: HJ893-MDB15-M, HL893-MDB15-M, HJ893-MDB40-M, HL893-MDB40-M

| | | |
|---------|----------|------------|
| STATE | Released | 01/09/2018 |
| DRAWN | NBorglum | 1/8/2018 |
| CHECKED | BAM | 01/09/2018 |

DIMENSIONS ARE IN
INCHES
PROJECT:
WAS:



VIKING PUMP, INC.
A Unit of IDEX Corporation
Cedar Falls, IA 50613
U.S.A.

THIS DRAWING IS THE PROPERTY OF
VIKING PUMP, INC. AND IS PROPRIETARY
IN GENERAL AND DETAIL. IT SHALL NOT BE
COPIED OR ITS CONTENTS REVEALED TO
OUTSIDE PARTIES WITHOUT THE WRITTEN
CONSENT OF VIKING PUMP, INC.

3D

DWG. NO.
HV-4048

SHEET 1 OF 1

REV. A.0

01/09/2018