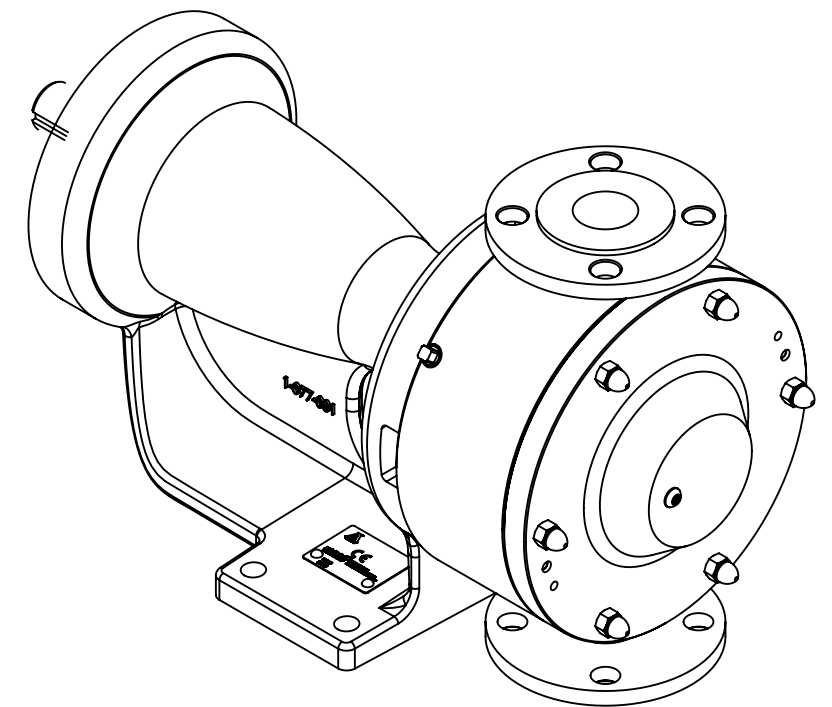
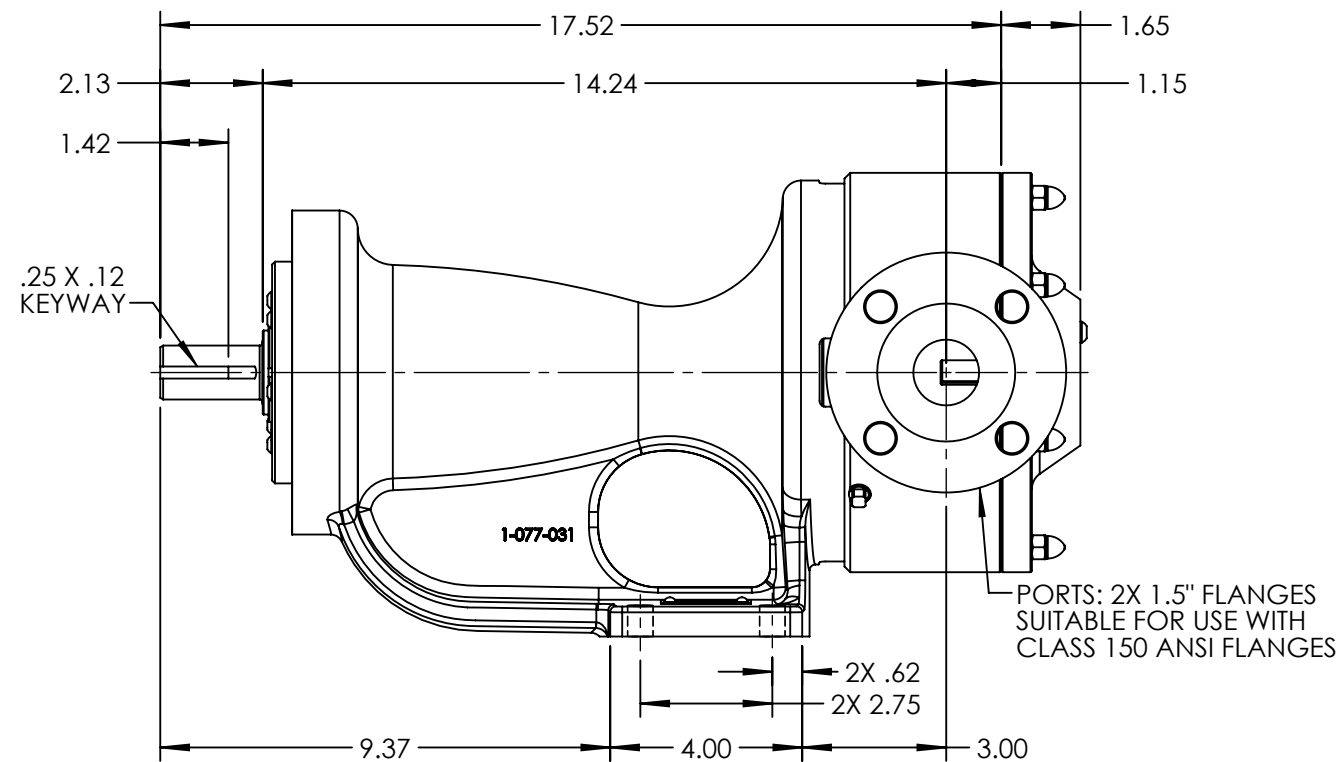


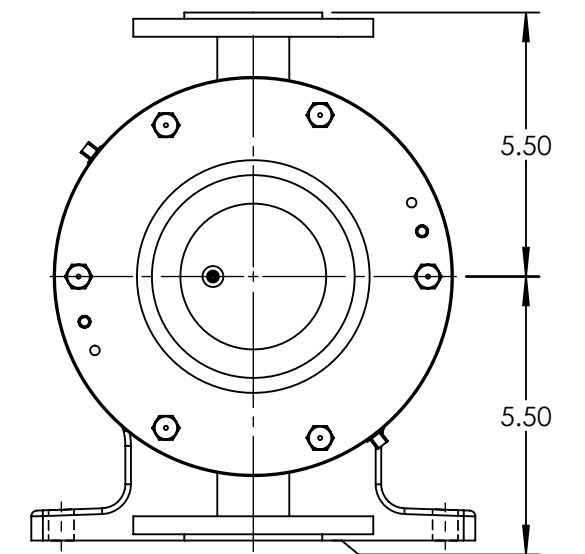
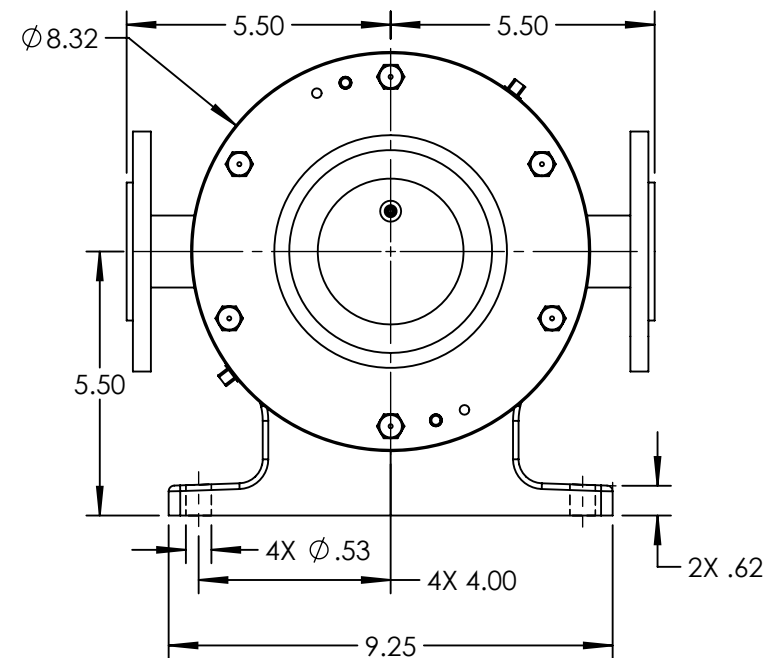
HORIZONTAL PORT ORIENTATION



VERTICAL PORT ORIENTATION



PORTS: 2X 1.5" FLANGES
SUITABLE FOR USE WITH
CLASS 150 ANSI FLANGES



VERTICAL PORT ORIENTATION

NOTES:
1. ALL DIMENSIONS ARE FOR REFERENCE ONLY.

STANDARD MODELS: KS4157B, KS157B

STATE	Released	05/21/2014	DIMENSIONS ARE IN INCHES
DRAWN	tdutcher	5/9/2014	PROJECT: D923
CHECKED	JAD	05/21/2014	WAS:



VIKING PUMP, INC.
A Unit of IDEX Corporation
Cedar Falls, IA 50613
U.S.A.

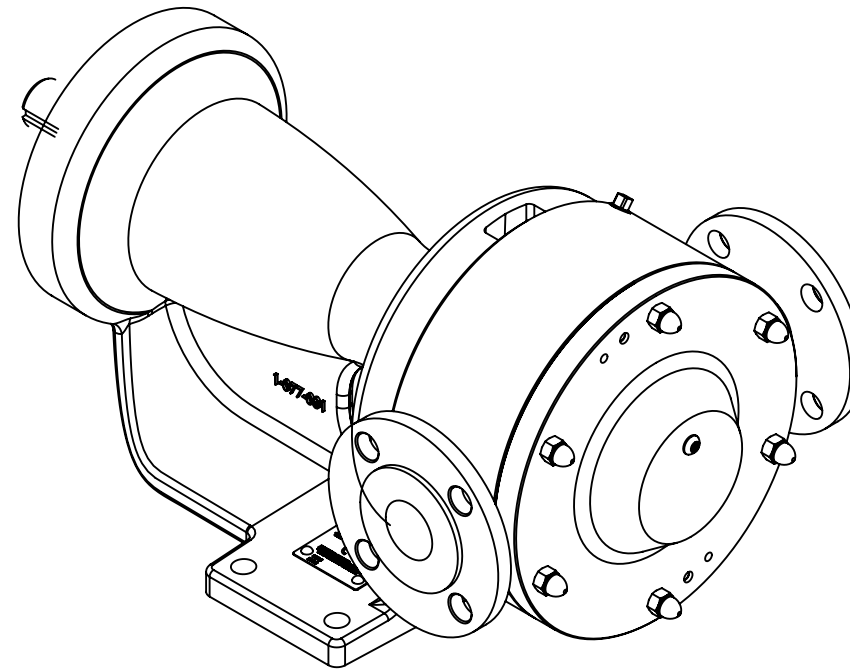
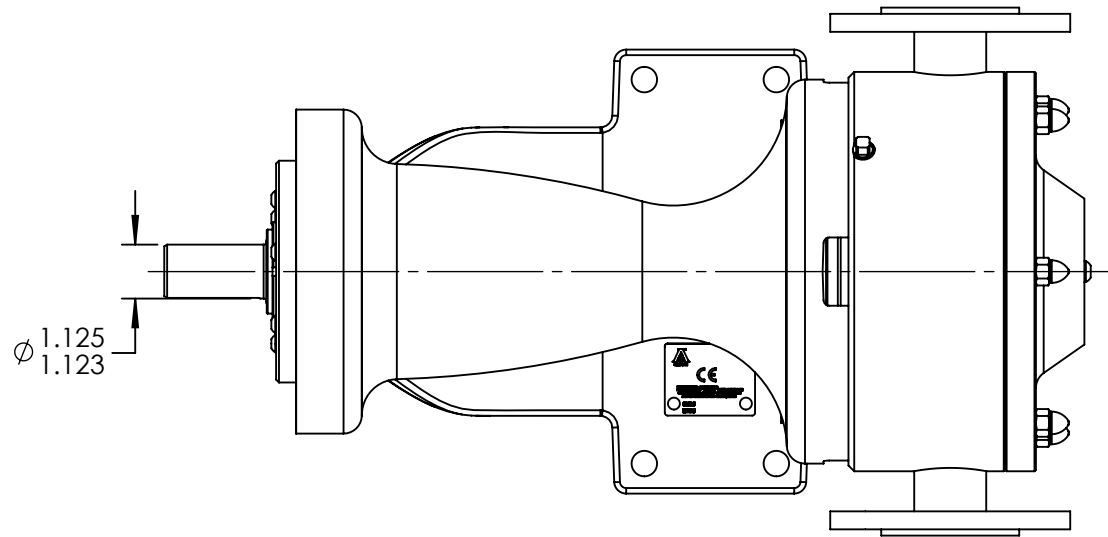
THIS DRAWING IS THE PROPERTY OF
VIKING PUMP, INC. AND IS PROPRIETARY
IN GENERAL AND DETAIL. IT SHALL NOT BE
COPIED OR ITS CONTENTS REVEALED TO
OUTSIDE PARTIES WITHOUT THE WRITTEN
CONSENT OF VIKING PUMP, INC.

3D

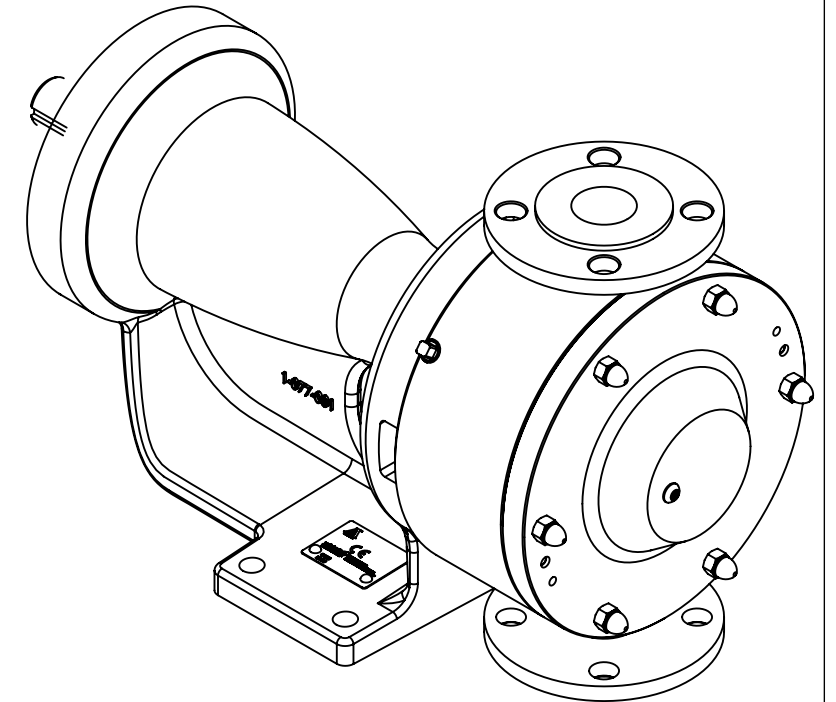
DWG. NO.
KV-2460

SHEET 1 OF 1 REV. A.0

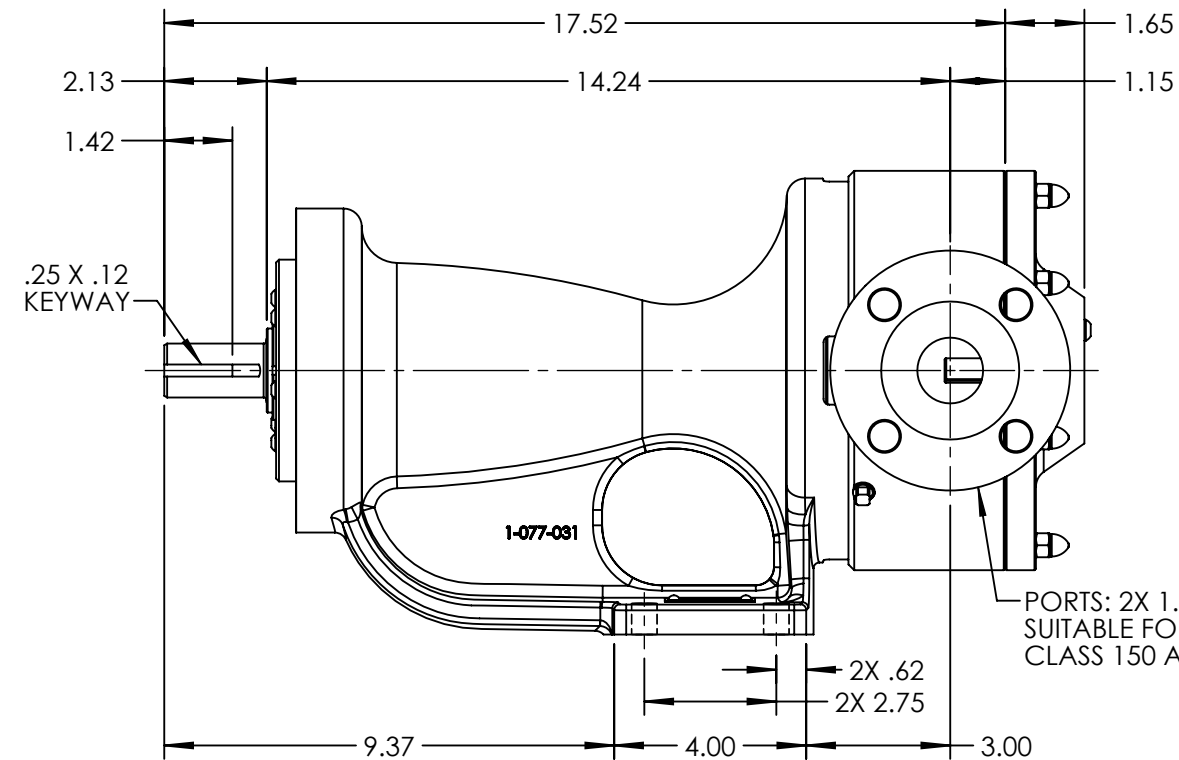
05/21/2014



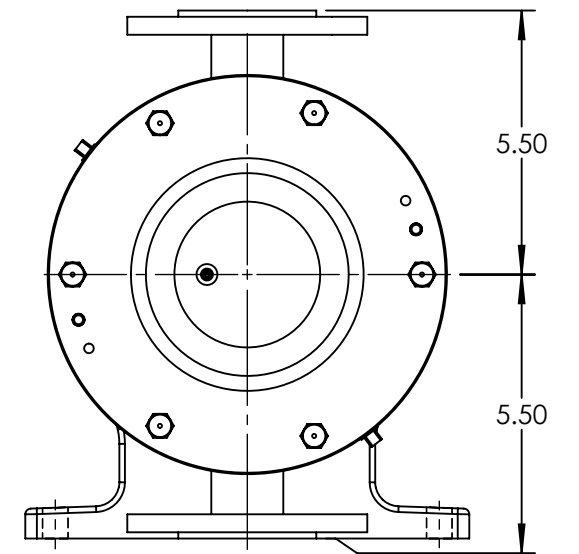
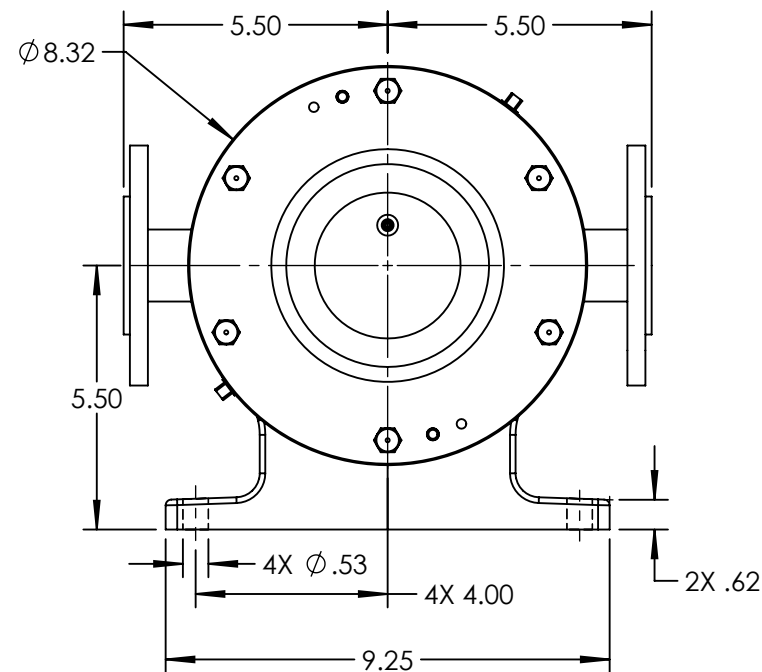
HORIZONTAL PORT ORIENTATION



VERTICAL PORT ORIENTATION



PORTS: 2X 1.5" FLANGES
SUITABLE FOR USE WITH
CLASS 150 ANSI FLANGES



VERTICAL PORT ORIENTATION

NOTES:
1. ALL DIMENSIONS ARE FOR REFERENCE ONLY.

STANDARD MODELS: HYG-030

STATE	Released	05/21/2014	DIMENSIONS ARE IN INCHES	 <small>Wrightflow Technologies, A Unit of IDEX Corporation Cedar Falls, IA 50613 U.S.A. Eastborne, East Sussex, BN23 6PT UK</small>	<small>THIS DRAWING IS THE PROPERTY OF WRIGHTFLOW TECHNOLOGIES AND IS PROPRIETARY IN GENERAL AND DETAIL. IT SHALL NOT BE COPIED OR ITS CONTENTS REVEALED TO OUTSIDE PARTIES WITHOUT THE WRITTEN CONSENT OF WRIGHTFLOW TECHNOLOGIES</small>	3D DWG. NO. KV-2460	SHEET 1 OF 1 REV. A.0 05/21/2014
DRAWN	tdutcher	5/9/2014	PROJECT: D923				
CHECKED	JAD	05/21/2014	WAS:				