

.25 X .12 KEYWAY

Ø 1.125
1.123

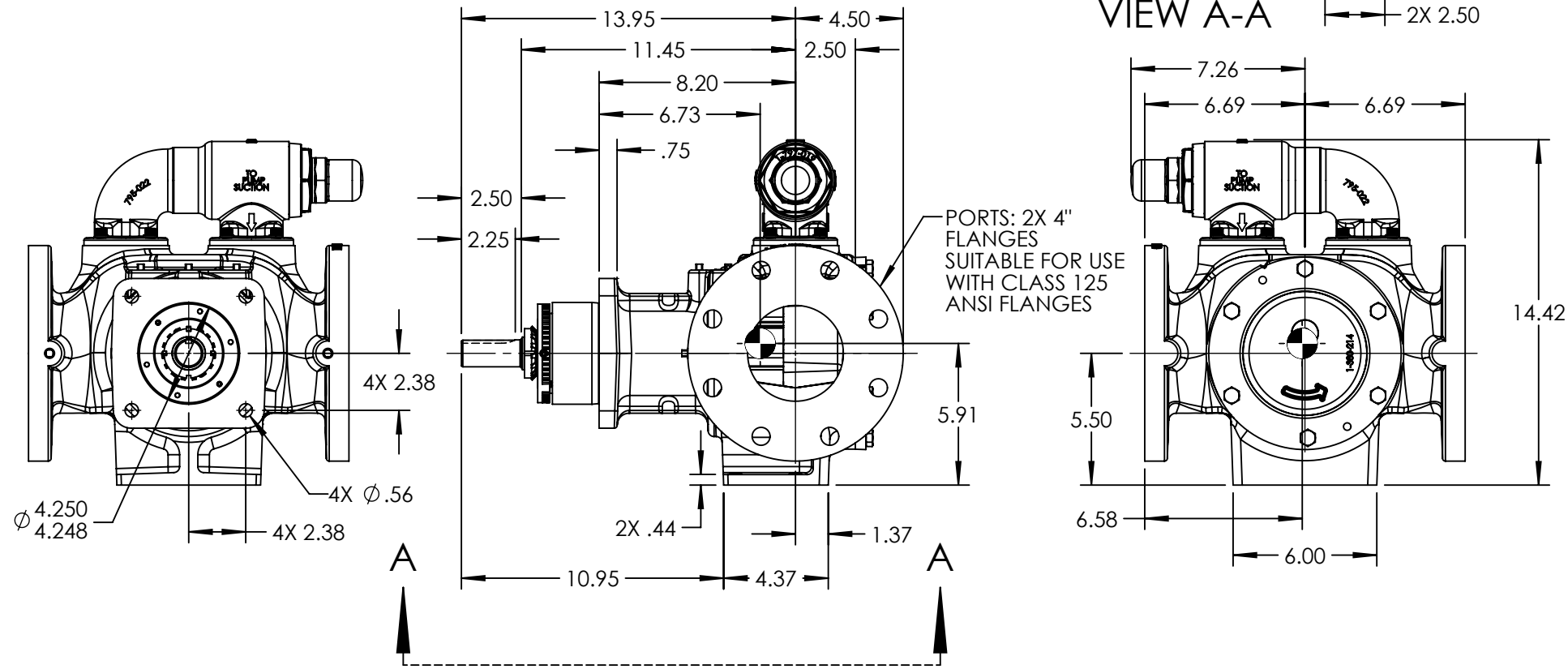
2X 2.50

2X 2.50

4X Ø .53

2X 2.50

VIEW A-A



NOTES:
1. ALL DIMENSIONS ARE FOR REFERENCE ONLY.

STANDARD MODELS: KE4195, KKE4195

STATE	Released	04/14/2016
DRAWN	cmihm	12/16/2014
CHECKED	VCI	04/13/2016

DIMENSIONS ARE IN INCHES	
PROJECT:	E151
WAS:	EX-E151-28



VIKING PUMP, INC.
A Unit of IDEX Corporation
Cedar Falls, IA 50613
U.S.A.

THIS DRAWING IS THE PROPERTY OF VIKING PUMP, INC. AND IS PROPRIETARY IN GENERAL AND DETAIL. IT SHALL NOT BE COPIED OR ITS CONTENTS REVEALED TO OUTSIDE PARTIES WITHOUT THE WRITTEN CONSENT OF VIKING PUMP, INC.

3D

DWG. NO.
KVE-14

SHEET 1 OF 1

REV. C.0
04/14/2016