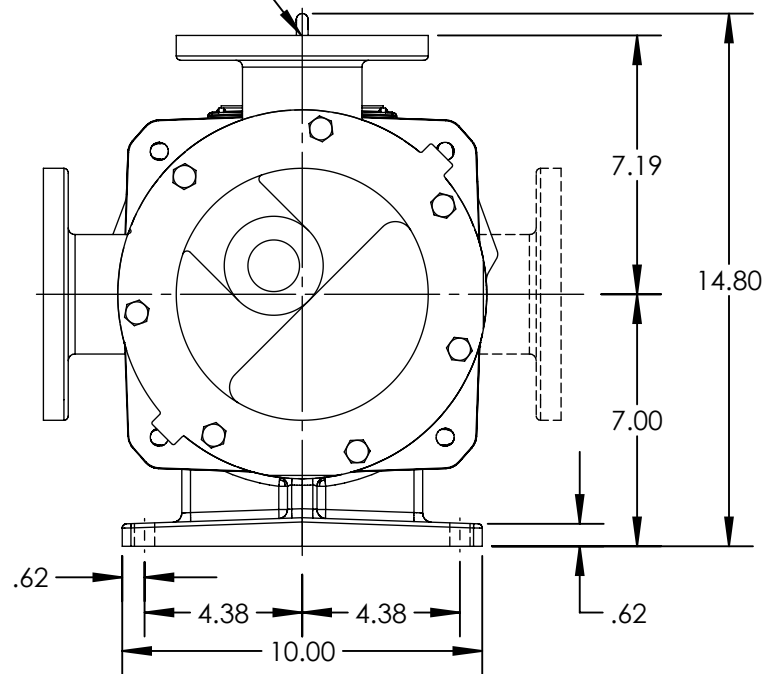


PORTS: 2X 2-1/2" FLANGES
SUITABLE FOR USE WITH
CLASS 125 ANSI FLANGES (8124A)
CLASS 150 ANSI FLANGES (8123A, 8127A)



MODELS: LQ8124A, LQ8123A, LQ8127A

STATE	Released	03/21/2012
DRAWN	bmanernach	3/19/2012
CHECKED	JDP	03/20/2012

DIMENSIONS ARE IN INCHES

PROJECT:

WAS:



VIKING PUMP, INC.
A Unit of IDEX Corporation
Cedar Falls, IA 50613
U.S.A.

THIS DRAWING IS THE PROPERTY OF VIKING PUMP, INC. AND IS PROPRIETARY IN GENERAL AND DETAIL. IT SHALL NOT BE COPIED OR ITS CONTENTS REVEALED TO OUTSIDE PARTIES WITHOUT THE WRITTEN CONSENT OF VIKING PUMP, INC.

2D

DWG. NO.
LV-4167

SHEET 1 OF 1

REV. A.0
03/21/2012