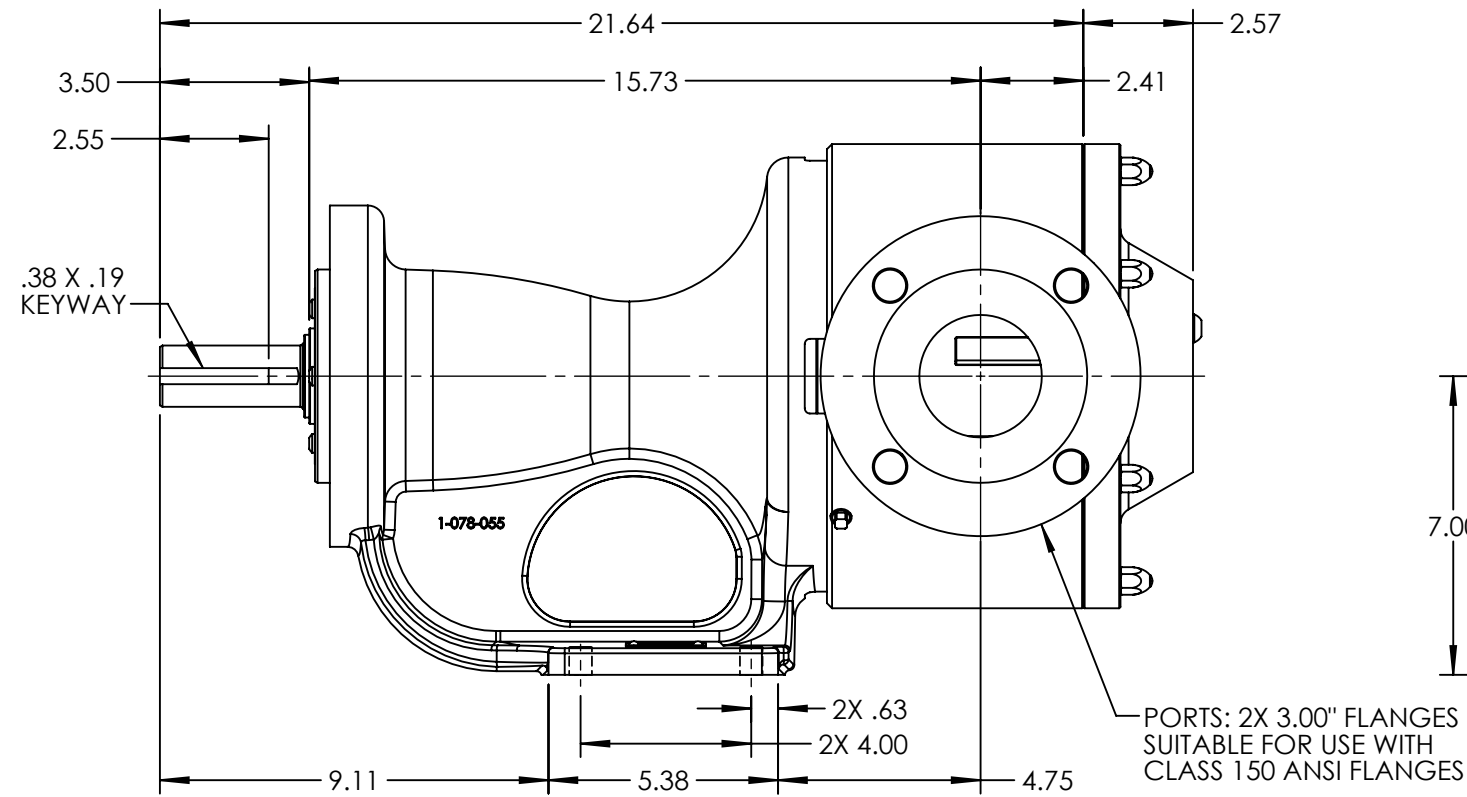
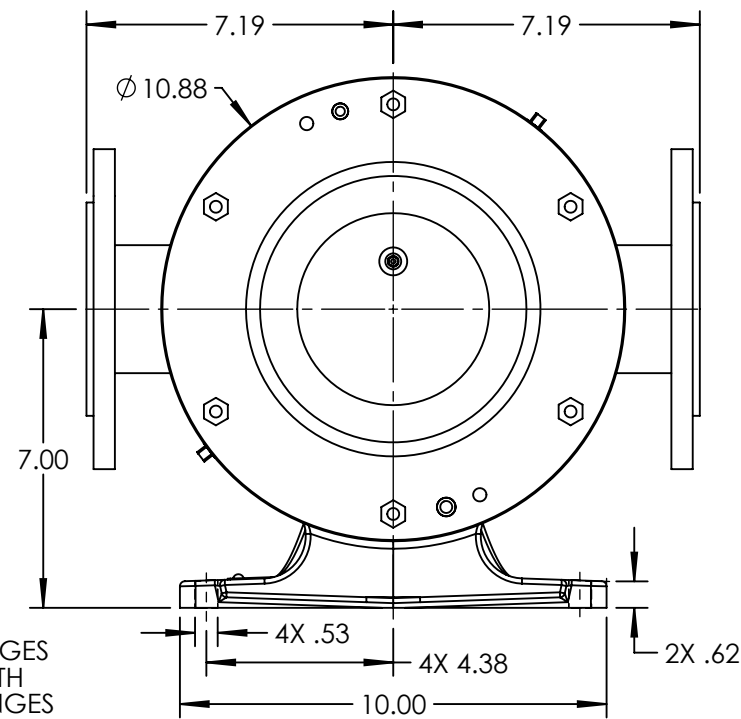


VERTICAL PORT ORIENTATION
NOT POSSIBLE WITH 3.00" ANSI FLANGES

HORIZONTAL PORT ORIENTATION



PORTS: 2X 3.00" FLANGES
SUITABLE FOR USE WITH
CLASS 150 ANSI FLANGES



STANDARD MODELS: LS4157B, LS157B

NOTES:
1. ALL DIMENSIONS ARE FOR REFERENCE ONLY.

| | | | |
|---------|----------|------------|-----------------------------|
| STATE | Released | 06/04/2014 | DIMENSIONS ARE IN INCHES |
| DRAWN | tdutcher | 6/4/2014 | PROJECT: D923 |
| CHECKED | JAD | 06/04/2014 | WAS: |



VIKING PUMP, INC.
A Unit of IDEX Corporation
Cedar Falls, IA 50613
U.S.A.

THIS DRAWING IS THE PROPERTY OF
VIKING PUMP, INC. AND IS PROPRIETARY
IN GENERAL AND DETAIL. IT SHALL NOT BE
COPIED OR ITS CONTENTS REVEALED TO
OUTSIDE PARTIES WITHOUT THE WRITTEN
CONSENT OF VIKING PUMP, INC.

3D

DWG. NO.
LV-4245

SHEET 1 OF 1

REV. A.0
06/04/2014