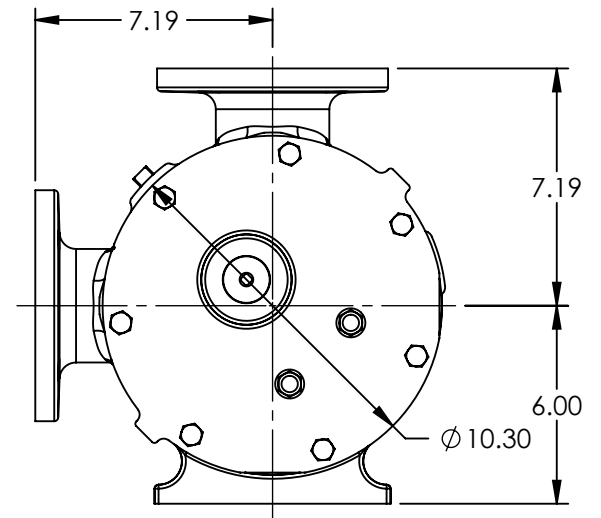
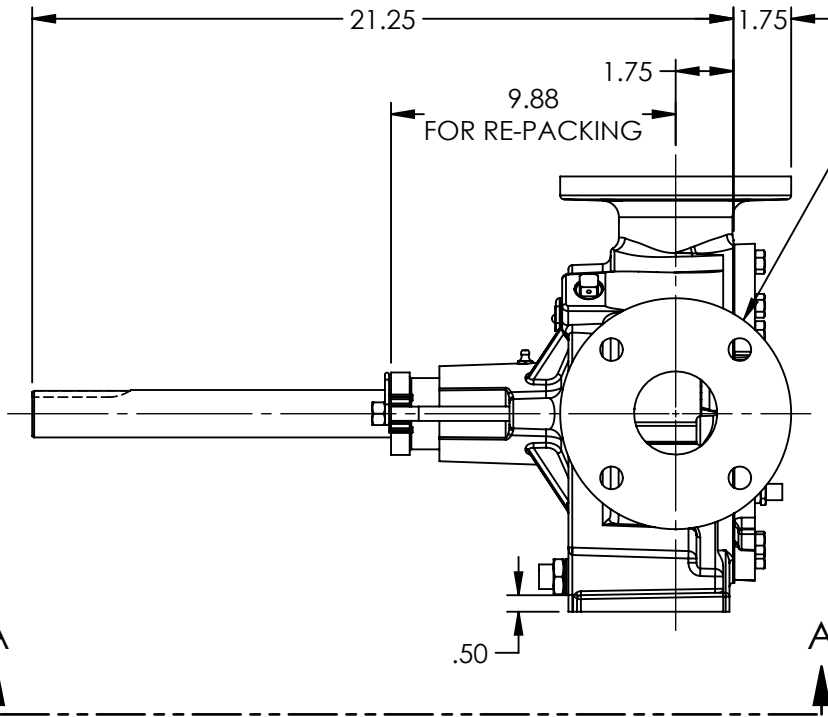


VIEW A-A

PORTS: 2X 2-1/2" FLANGES
SUITABLE FOR USE WITH
CLASS 125 ANSI FLANGES



- NOTES:
1. ALL DIMENSIONS ARE FOR REFERENCE ONLY.
2. HEATER CONDUIT HIDDEN FOR CLARITY.

STANDARD MODEL: LQ32E

STATE	Released	08/09/2018
DRAWN	sjakel	07/26/2018
CHECKED	BAM	08/09/2018

DIMENSIONS ARE IN INCHES
PROJECT: E121
WAS:



VIKING PUMP, INC.
A Unit of IDEX Corporation
Cedar Falls, IA 50613
U.S.A.

THIS DRAWING IS THE PROPERTY OF VIKING PUMP, INC. AND IS PROPRIETARY IN GENERAL AND DETAIL. IT SHALL NOT BE COPIED OR ITS CONTENTS REVEALED TO OUTSIDE PARTIES WITHOUT THE WRITTEN CONSENT OF VIKING PUMP, INC.

3D

DWG. NO.
LV-4397

SHEET 1 OF 1

REV. A.0

08/09/2018