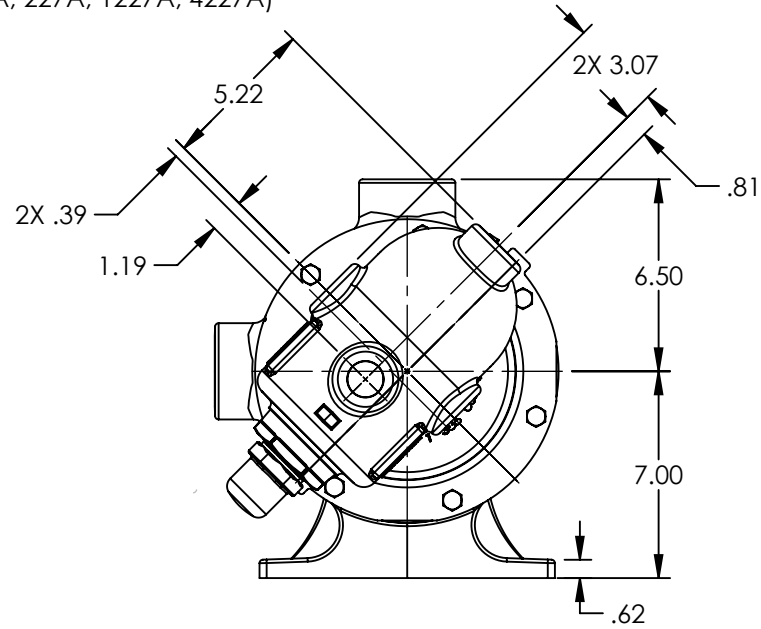
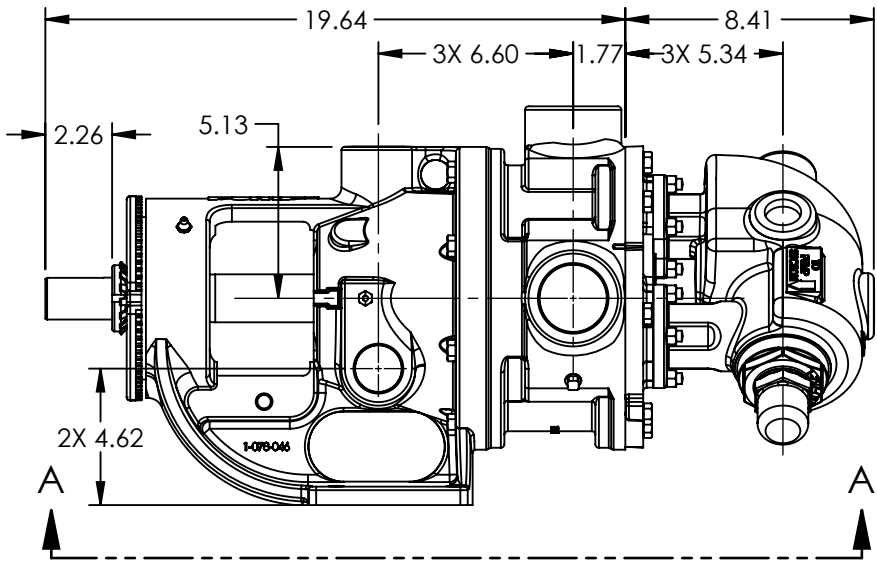



PORTS: 2X 3" FLANGES
 SUITABLE FOR USE WITH
 CLASS 125 ANSI FLANGES
 (224A, 1224A, 4224A, 4226A)
 CLASS 150 ANSI FLANGES
 (223A, 4223A, 226A, 4226A, 227A, 1227A, 4227A)

VIEW A-A



STANDARD MODELS:
 L224AE, L1224AE, L4224AE, L4224B

NOTES:
 1. ALL DIMENSIONS ARE FOR REFERENCE ONLY.

STATE	Released	02/18/2020	DIMENSIONS ARE IN INCHES		VIKING PUMP, INC. A Unit of IDEX Corporation Cedar Falls, IA 50613 U.S.A.	THIS DRAWING IS THE PROPERTY OF VIKING PUMP, INC. AND IS PROPRIETARY IN GENERAL AND DETAIL. IT SHALL NOT BE COPIED OR ITS CONTENTS REVEALED TO OUTSIDE PARTIES WITHOUT THE WRITTEN CONSENT OF VIKING PUMP, INC.	3D	DWG. NO.	SHEET 1 OF 1	REV. A.1			
DRAWN	AJohnson	2/12/2020						PROJECT:					
CHECKED	AA	02/18/2020						WAS:					