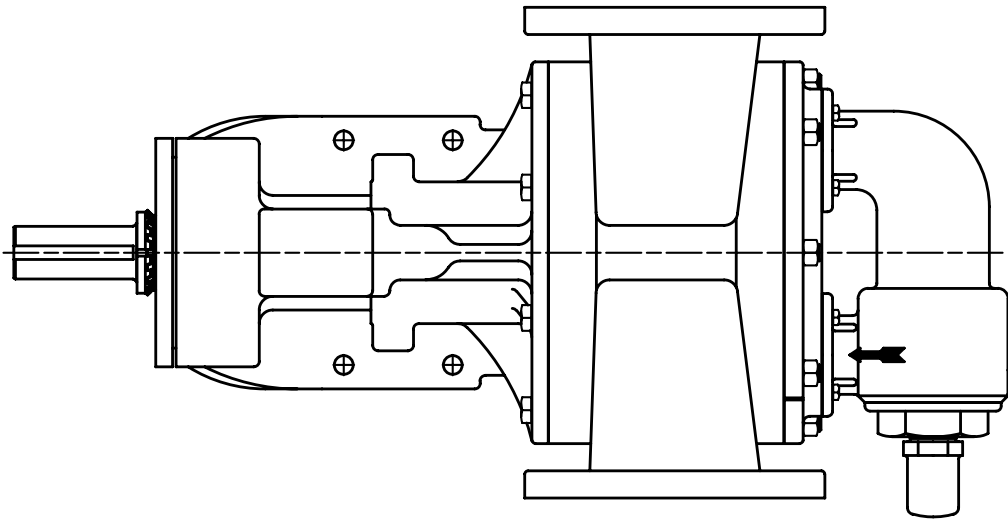
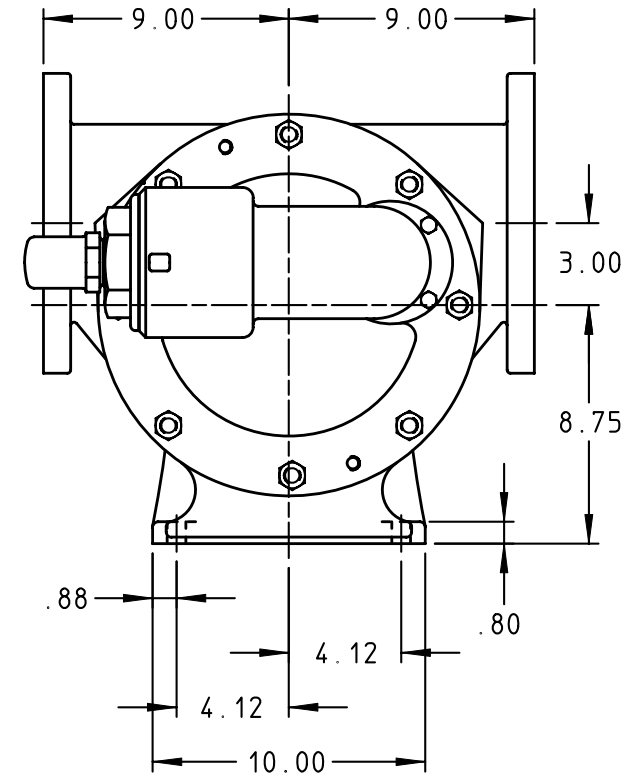
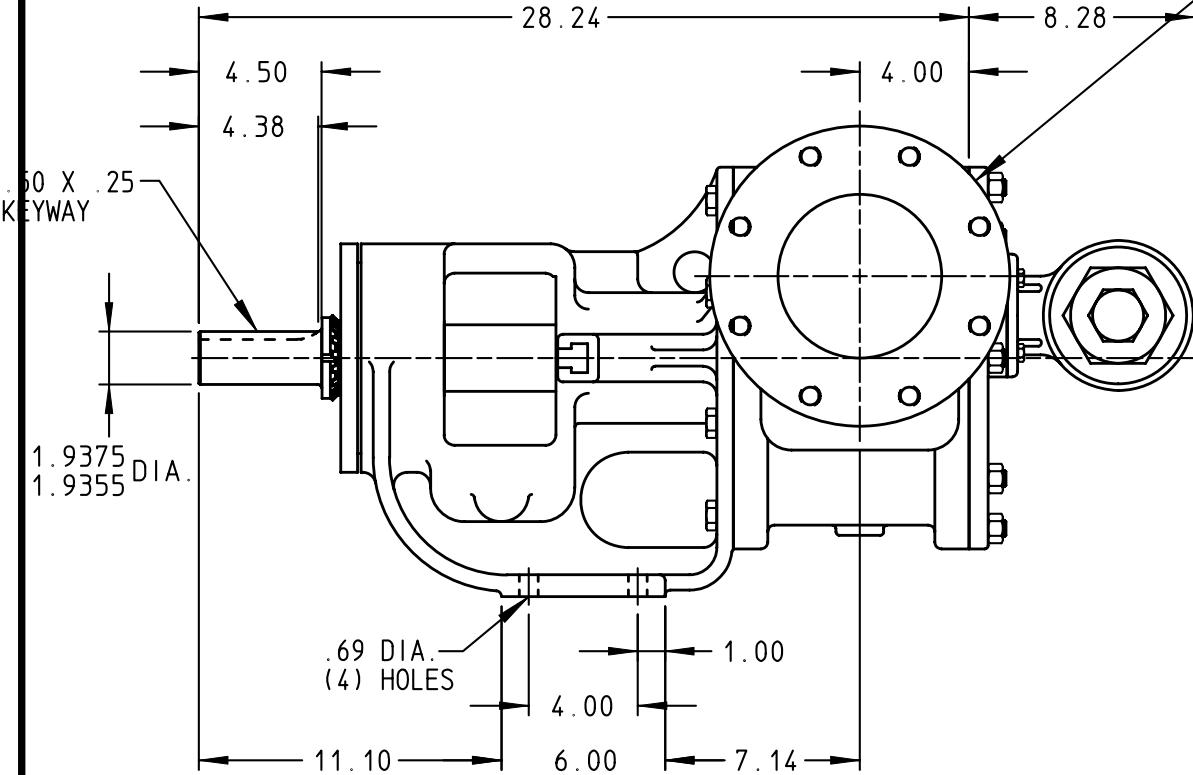


DRAWING NO.
QV-1537



PORTS: 6" FLANGES
 STUDS AND NUTS (NOT SHOWN)
 SUITABLE FOR USE WITH
 125# ANSI (124A, 4124A)
 150# ANSI (123A, 4123A,
 127A, 4127A,
 126A, 4126A)



STANDARD MODELS: QS124A, QS4124A, QS123A, QS4123A, QS126A, QS4126A, QS127A, QS4127A

DRAWN JAKEL DATE 14 AUG 1991
 CHECKED DC DATE 14 AUG 1991

THIS DRAWING IS THE PROPERTY OF VIKING PUMP INC. AND IS PROPRIETARY IN GENERAL AND DETAIL. IT SHALL NOT BE COPIED OR ITS CONTENTS REVEALED TO OUTSIDE PARTIES WITHOUT THE WRITTEN CONSENT OF VIKING PUMP INC.



VIKING PUMP, INC.
 A Unit of IDEX Corporation
 Cedar Falls, Iowa 50613
 U.S.A.

DRAWING NO.
QV-1537

REV. E
 18 MAY 2007