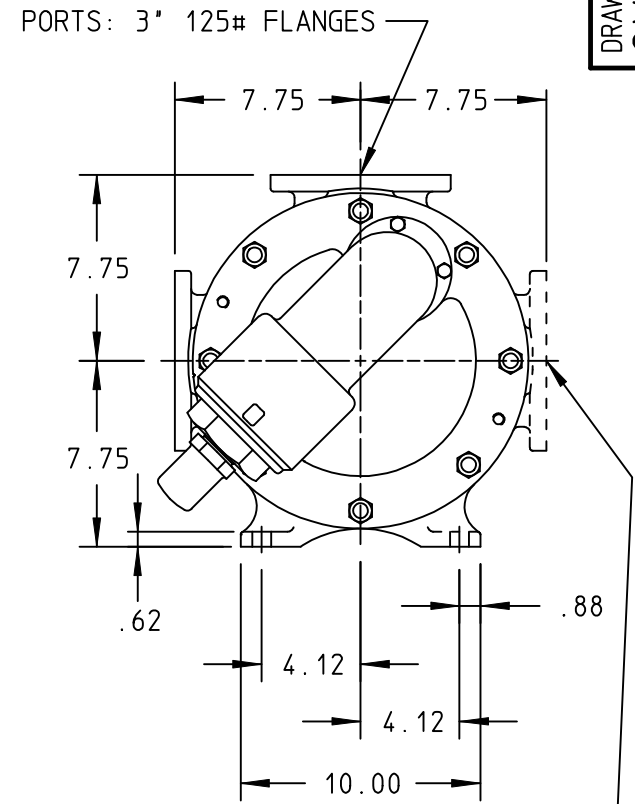
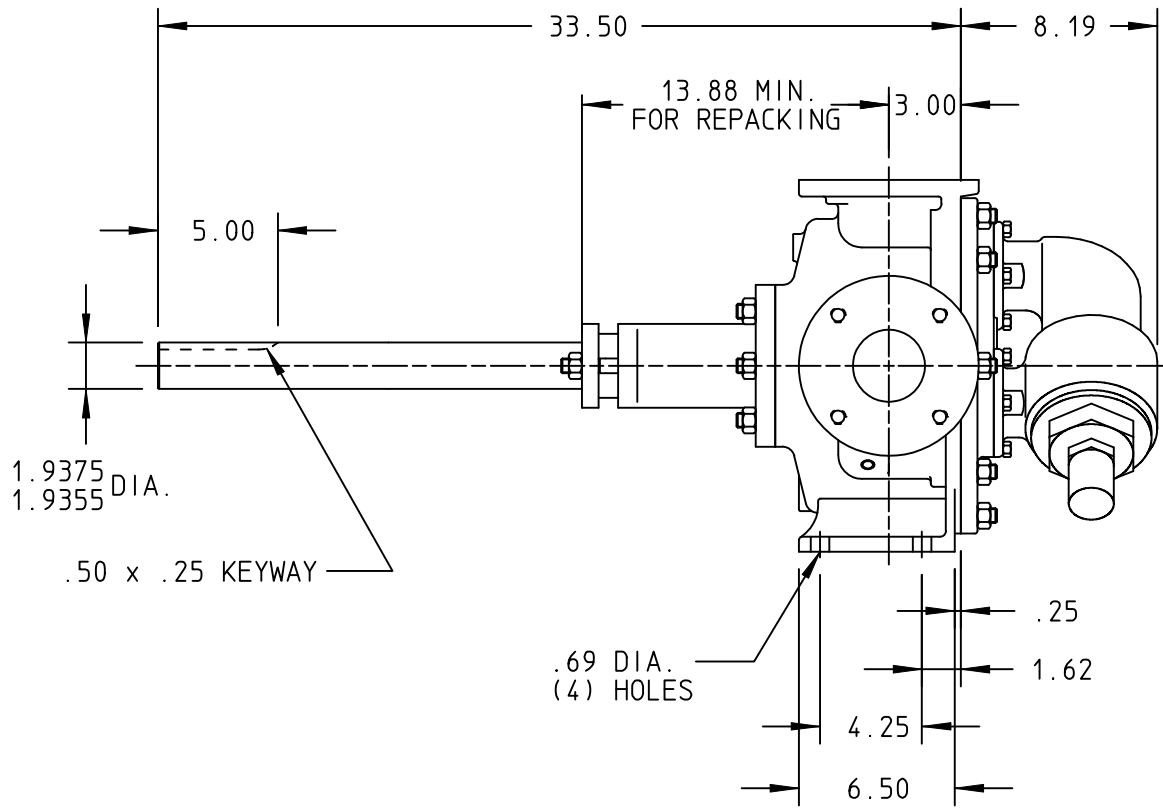


DRAWING NO.
QV-1781



LEFT HAND PORT SHOWN DOTTED

STANDARD MODELS: Q32

DRAWN WUNDERLICH DATE 17 JUL 2000
 CHECKED DRS DATE 19 OCT 2000

THIS DRAWING IS THE PROPERTY OF VIKING PUMP INC. AND IS PROPRIETARY IN GENERAL AND DETAIL. IT SHALL NOT BE COPIED OR ITS CONTENTS REVEALED TO OUTSIDE PARTIES WITHOUT THE WRITTEN CONSENT OF VIKING PUMP INC.

VIKING PUMP VIKING PUMP, INC.
 A Unit of IDEX Corporation
 Cedar Falls, Iowa 50613
 U.S.A.

DRAWING NO.
QV-1781

REV. A
 17 JUL 2000