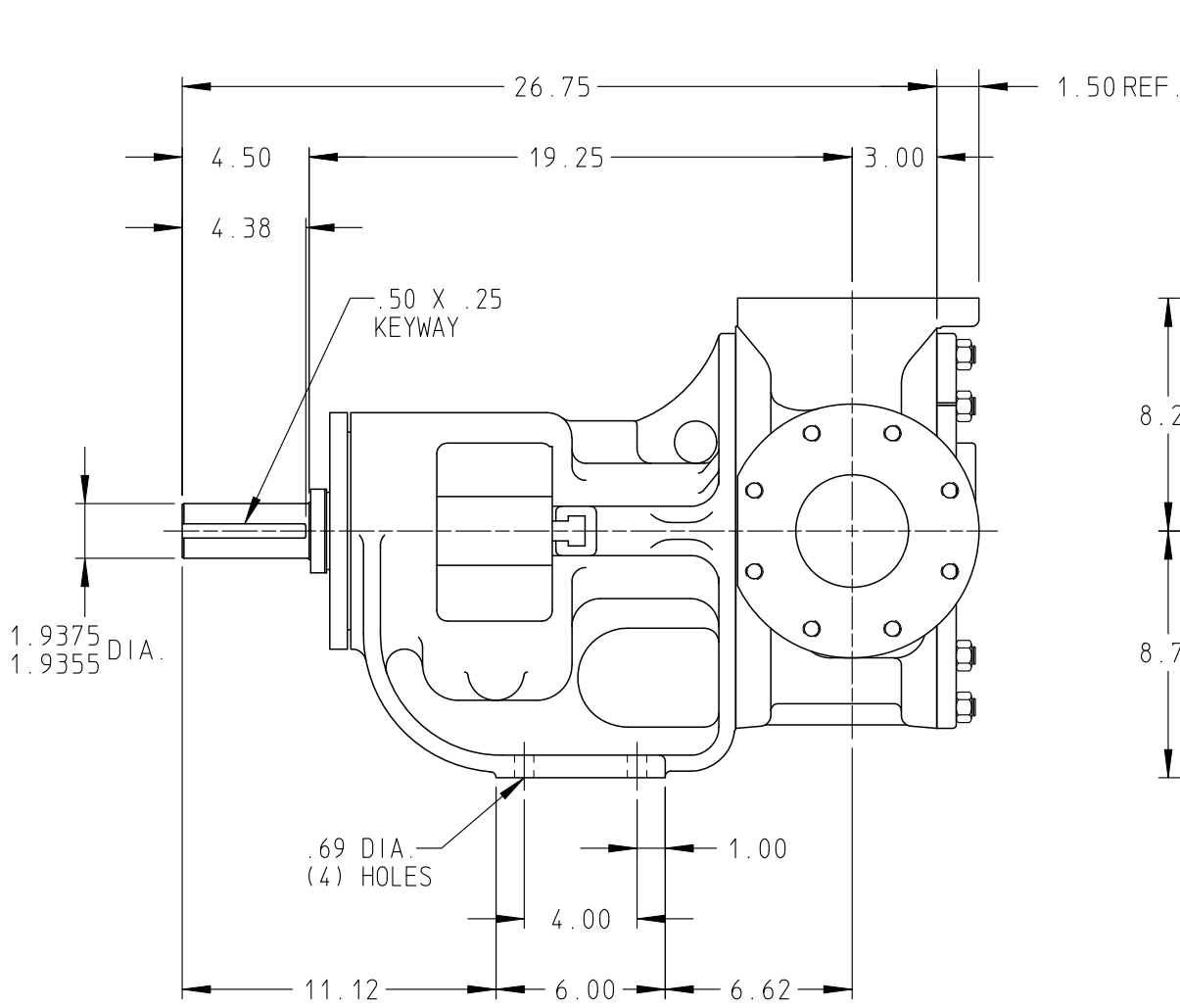
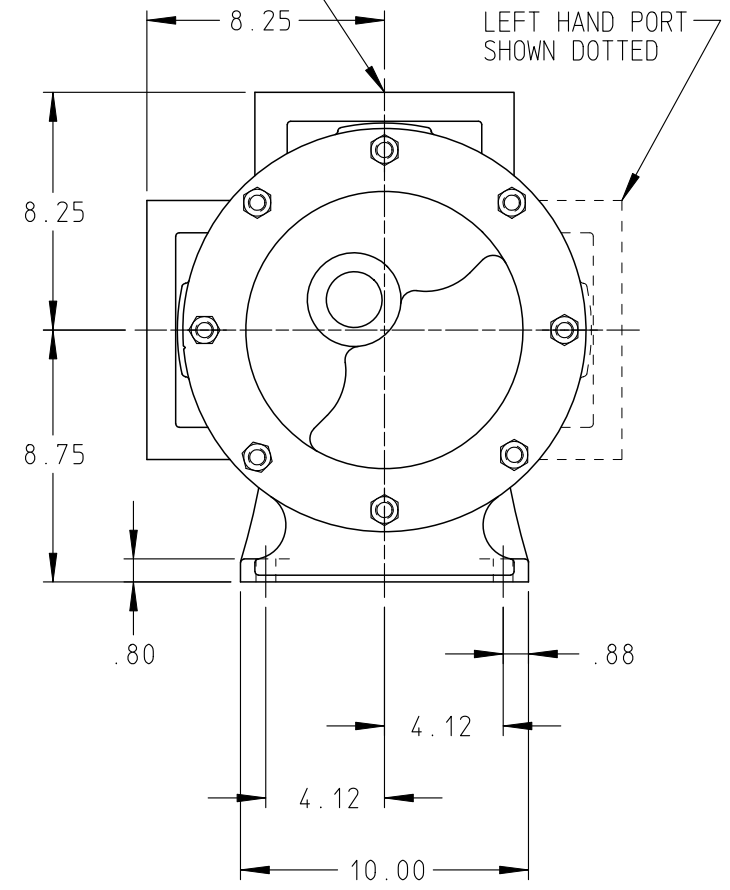


DRAWING NO.
QV-1878



PORTS: 4" FLANGES
 STUDS AND NUTS (NOT SHOWN)
 SUITABLE FOR USE WITH
 125# (124A, 4124A, 4124B, 4624B)
 150# (123A, 4123A, 127A,
 4127A, 126A, 4126A)



STANDARD MODELS: Q124A, Q4124A, Q123A, Q4123A, Q126A, Q4126A, Q127A, Q4127A, Q4124B
 MODELS WITH OPTIONAL FLANGES: Q4624B

DRAWN SICKELS DATE 25 AUG 2004
 CHECKED DRS DATE 24 AUG 2004

THIS DRAWING IS THE PROPERTY OF VIKING PUMP
 INC. AND IS PROPRIETARY IN GENERAL AND DETAIL.
 IT SHALL NOT BE COPIED OR ITS CONTENTS
 REVEALED TO OUTSIDE PARTIES WITHOUT THE
 WRITTEN CONSENT OF VIKING PUMP INC.



VIKING PUMP, INC.
 A Unit of IDEX Corporation
 Cedar Falls, Iowa 50613
 U.S.A.

DRAWING NO.
QV-1878

REV. B
 11 AUG 2016