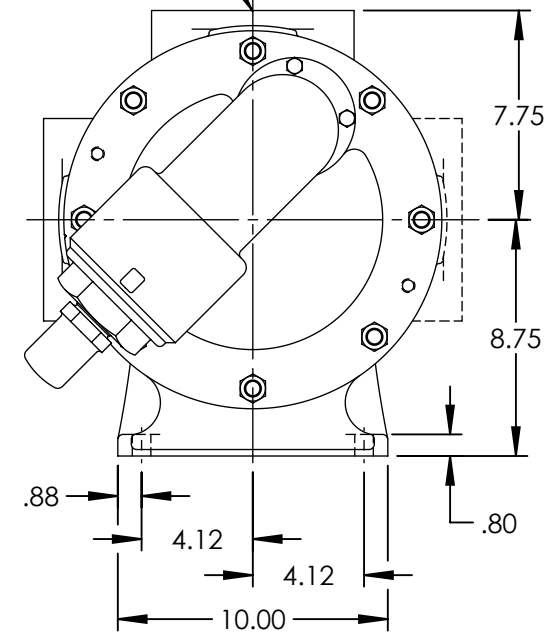


PORTS: 2X 3" FLANGES
WITH STUDS AND NUTS (NOT SHOWN)
SUITABLE FOR USE WITH
CLASS 125 ANSI FLANGES
(124A, 4124A, 4124B, 4624B)
CLASS 150 ANSI FLANGES
(126A, 4126A, 123A, 4123A,
127A, 4127A)



NOTES:
1. ALL DIMENSIONS ARE FOR REFERENCE ONLY.

STANDARD MODELS: Q4624B
MODELS WITH OPTIONAL FLANGED PORTS: Q124A, Q4124A, Q123A, Q4123A, Q126A, Q4126A,
Q127A, Q4127A

STATE	Released	08/12/2016	DIMENSIONS ARE IN INCHES	VIKING PUMP	VIKING PUMP, INC. A Unit of IDEX Corporation Cedar Falls, IA 50613 U.S.A.	THIS DRAWING IS THE PROPERTY OF VIKING PUMP, INC. AND IS PROPRIETARY IN GENERAL AND DETAIL. IT SHALL NOT BE COPIED OR ITS CONTENTS REVEALED TO OUTSIDE PARTIES WITHOUT THE WRITTEN CONSENT OF VIKING PUMP, INC.	2D	DWG. NO. QV-2044	SHEET 1 OF 1	REV. A.1
DRAWN	sjakel	04/11/2014								PROJECT:
CHECKED	CJM	08/11/2016	WAS:							