



TECHNICAL SERVICE MANUAL

UNIVERSAL 682
HEAVY DUTY JACKETED PUMPS
SERIES 4223AA AND 4323AA
SIZES H, HL, K, KK, LQ, LL, LS, Q, QS, N, R, RS

SECTION	TSM 632
PAGE	1 OF 9
ISSUE	B

CONTENTS

Safety Information and Instructions	3
Special Information	3
Maintenance	3
Cartridge Mechanical Seal	4
Replacement	4
Removal	4
Installation	5
Disassembly	5
Assembly	6
End Clearance Adjustment	7
Installation of Carbon Graphite Bushings	7
Pressure Relief Valve Instructions	8
Warranty	9

INTRODUCTION

The illustrations used in this manual are for identification purposes only and cannot be used for ordering parts. Obtain a parts list from the factory or a Viking representative. Always give the complete name of the part, part number and material with the model number and serial number of the pump when ordering repair parts. The unmounted pump or pump unit model number and serial number are on the nameplate.

In the Viking model number system, basic size letters are combined with the series number (4223AA and 4323AA) indicating the basic pump construction material.

This manual deals only with Series 4223AA and 4323AA Heavy Duty Jacketed Bracket Mounted Pumps. Refer to Figures 1 through 8 for general configuration and nomenclature used in this manual. Pump specifications and recommendations are listed in Catalog Section 632, Universal 682, Heavy Duty Jacketed Pumps.

UNMOUNTED PUMP	UNITS
MECH. SEAL	AA = Universal Seal Pump with API-682 Seal
H4223AA	
HL4223AA	Units are designated by the unmounted pump model numbers followed by a letter indicating drive style. D = Direct Connected R = Viking Speed Reducer P = Commercial Speed Reducer
K4223AA	
KK4223AA	
LQ4223AA	
LL4223AA	
LS4223AA	
Q4223AA	
QS4223AA	
N4323AA	
R4323AA	
RS4323AA	

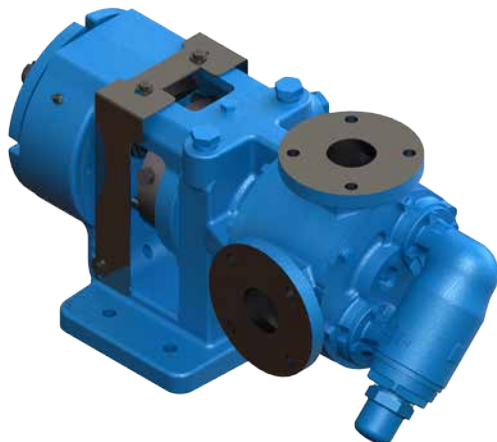


FIGURE 1
SIZES H - QS

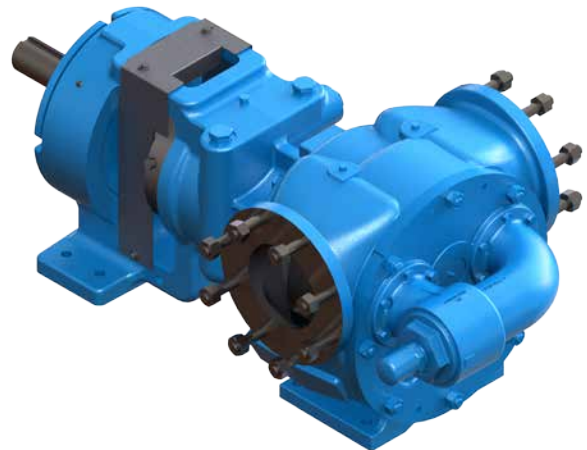


FIGURE 2
SIZES N - RS



SAFETY INFORMATION AND INSTRUCTIONS

IMPROPER INSTALLATION, OPERATION OR MAINTENANCE OF PUMP MAY CAUSE SERIOUS INJURY OR DEATH AND/OR RESULT IN DAMAGE TO PUMP AND/OR OTHER EQUIPMENT. VIKING'S WARRANTY DOES NOT COVER FAILURE DUE TO IMPROPER INSTALLATION, OPERATION OR MAINTENANCE.

THIS INFORMATION MUST BE FULLY READ BEFORE BEGINNING INSTALLATION, OPERATION OR MAINTENANCE OF PUMP AND MUST BE KEPT WITH PUMP. PUMP MUST BE INSTALLED, OPERATED AND MAINTAINED ONLY BY SUITABLY TRAINED AND QUALIFIED PERSONS.

THE FOLLOWING SAFETY INSTRUCTIONS MUST BE FOLLOWED AND ADHERED TO AT ALL TIMES.

Symbol Legend :



Danger - Failure to follow the indicated instruction may result in serious injury or death.

WARNING

Warning - In addition to possible serious injury or death, failure to follow the indicated instruction may cause damage to pump and/or other equipment.



BEFORE opening any liquid chamber (pumping chamber, reservoir, relief valve adjusting cap fitting, etc.) be sure that :

- Any pressure in the chamber has been completely vented through the suction or discharge lines or other appropriate openings or connections.
- The pump drive system means (motor, turbine, engine, etc.) has been "locked out" or otherwise been made non-operational so that it cannot be started while work is being done on the pump.
- You know what material the pump has been handling, have obtained a material safety data sheet (MSDS) for the material, and understand and follow all precautions appropriate for the safe handling of the material.

WARNING

INSTALL pressure gauges/sensors next to the pump suction and discharge connections to monitor pressures.



WARNING

USE extreme caution when lifting the pump. Suitable lifting devices should be used when appropriate. Lifting eyes installed on the pump must be used **only** to lift the pump, **not** the pump with drive and/or base plate. If the pump is mounted on a base plate, the base plate must be used for all lifting purposes. If slings are used for lifting, they must be safely and securely attached. For weight of the pump alone (which does not include the drive and/or base plate) refer to the Viking Pump product catalog.



BEFORE operating the pump, be sure all drive guards are in place.



DO NOT attempt to dismantle a pressure relief valve that has not had the spring pressure relieved or is mounted on a pump that is operating.



DO NOT operate pump if the suction or discharge piping is not connected.



AVOID contact with hot areas of the pump and/or drive. Certain operating conditions, temperature control devices (jackets, heat-tracing, etc.), improper installation, improper operation, and improper maintenance can all cause high temperatures on the pump and/or drive.



DO NOT place fingers into the pumping chamber or its connection ports or into any part of the drive train if there is **any possibility** of the pump shafts being rotated.



WARNING

THE PUMP must be provided with pressure protection. This may be provided through a relief valve mounted directly on the pump, an in-line pressure relief valve, a torque limiting device, or a rupture disk. If pump rotation may be reversed during operation, pressure protection must be provided on **both** sides of pump. Relief valve adjusting screw caps must always point towards suction side of the pump. If pump rotation is reversed, position of the relief valve must be changed. Pressure relief valves cannot be used to control pump flow or regulate discharge pressure. For additional information, refer to Viking Pump's Technical Service Manual TSM 000 and Engineering Service Bulletin ESB-31.

WARNING

DO NOT exceed the pumps rated pressure, speed, and temperature, or change the system/duty parameters from those the pump was originally supplied, without confirming its suitability for the new service.



WARNING

BEFORE operating the pump, be sure that:

- It is clean and free from debris
- all valves in the suction and discharge pipelines are fully opened.
- All piping connected to the pump is fully supported and correctly aligned with the pump.
- Pump rotation is correct for the desired direction of flow.



WARNING

THE PUMP must be installed in a manner that allows safe access for routine maintenance and for inspection during operation to check for leakage and monitor pump operation.

SPECIAL INFORMATION

DANGER !

Before opening any Viking pump liquid chamber (pumping chamber, reservoir, relief valve adjusting cap fitting, etc.) Be sure:

1. That any pressure in the chamber has been completely vented through the suction or discharge lines or other appropriate openings or connections.
2. That the driving means (motor, turbine, engine, etc.) has been "locked out" or made non-operational so that it cannot be started while work is being done on pump.
3. That you know what liquid the pump has been handling and the precautions necessary to safely handle the liquid. Obtain a material safety data sheet (MSDS) for the liquid to be sure these precautions are understood.

Failure to follow above listed precautionary measures may result in serious injury or death.

ROTATION: Viking pumps operate equally well in a clockwise or counterclockwise rotation. Shaft rotation determines which port is suction and which is discharge. Port in area where pumping elements (gear teeth) come out of mesh is suction port.

PRESSURE RELIEF VALVES:

1. Viking pumps are positive displacement pumps and must be provided with some sort of pressure protection. This may be a relief valve mounted directly on the pump, an inline pressure relief valve, a torque limiting device or a rupture disk.
2. There are relief valve options available on those pump models designed to accept a relief valve. Options may include a return to tank relief valve and a jacketed relief valve. Pumps equipped with a jacketed head plate are generally not available with a relief valve.
3. If pump rotation is reversed during operation, pressure protection must be provided on **both** sides of pump.
4. Relief valve adjusting screw cap must **always** point towards suction side of pump. If pump rotation is reversed, remove pressure relief valve and turn end for end.
5. Pressure relief valves cannot be used to control pump flow or regulate discharge pressure.

For additional information on pressure relief valves, Refer to Technical Service Manual TSM000 and Engineering Service Bulletin ESB-31.

Jacketing of the bracket and head provide large chambers at both ends of the pumping chamber and around the stuffing box for temperature control of the product in the pump. Check the pump to be sure it is heated to operating temperature prior to startup.

MECHANICAL SEALS:

Extra care should be taken in repair of these pumps. Be sure to read and follow all special instructions supplied with your pump.

MAINTENANCE

Series 4223AA and 4323AA pumps are designed for long, trouble-free service life under a wide variety of application conditions with a minimum of maintenance. The points listed below will help provide long service life.

LUBRICATION: Grease all grease fittings every 2000 hours of operation. If service is severe, grease more often. Grease must be applied slowly with a hand gun until the grease exiting the lip seal or relief plug is similar in consistency and color to the new grease.

Use a NLGI #2 polyurea base grease for normal applications. For hot or cold applications, use appropriate grease. Consult factory with specific lubrication questions.

CLEANING PUMP: Keep pump as clean as possible. This will facilitate inspection, adjustment and repair work and help prevent overlooking a dirt covered grease fitting.

LIFTING: There is a lift eye on the bracket behind the casing for H-QS size pumps. This is intended for the pump only, not the entire unit.

STORAGE: If pump is to be stored, or not used for six months or more, pump must be drained and a light coat of light oil must be applied to all internal pump parts.

Lubricate fittings and apply grease to pump shaft extension. Viking suggests rotating pump shaft by hand one complete revolution every 30 days to circulate the oil. Tighten all pump assembly bolts before putting pump in service after being stored.

SUGGESTED REPAIR TOOLS: The following tools must be available to properly repair series 4223AA and 4323AA pumps. These tools are in addition to standard mechanics' tools such as open-end wrenches, pliers, screwdrivers, etc. Most of the items can be obtained from an industrial supply house.

1. Soft Headed Hammer
2. Allen wrenches
3. See TR-813 for locknut tools. Commercially available adjustable hook spanner wrenches are available for locknut removal, below.

Sources:

- #471 J. H. Williams & Co. or equal for H-KK sizes
- #472 J. H. Williams & Co. or equal for LQ-QS sizes
- #474 J. H. Williams & Co. or equal for N size
- #474A J. H. Williams & Co. or equal for R-RS sizes

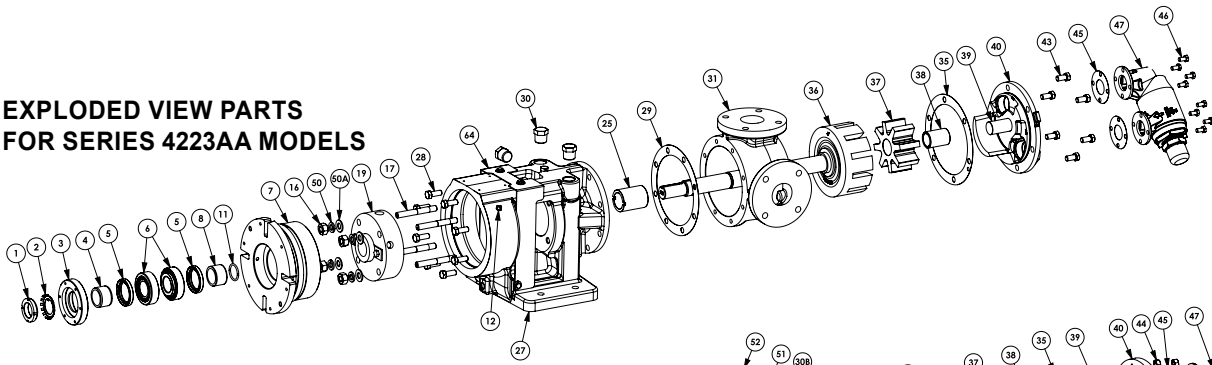
4. Spanner wrench, adjustable face spanner pin type for use on bearing housing endcap

Sources:

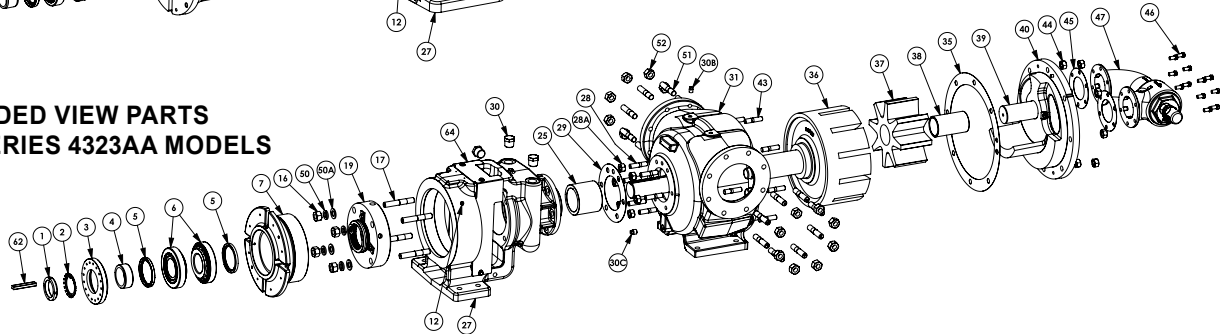
- #482 J. H. Williams & Co. or equal for H-LS sizes
- #483 J. H. Williams & Co. or equal for Q- RS sizes

5. Brass or plastic bar
6. Arbor press

**EXPLODED VIEW PARTS
FOR SERIES 4223AA MODELS**



**EXPLODED VIEW PARTS
FOR SERIES 4323AA MODELS**



ITEM	NAME OF PART	ITEM	NAME OF PART	ITEM	NAME OF PART	ITEM	NAME OF PART
1	Locknut	16	Seal Nuts	30C	Pipe Plug	45	Relief Valve Gaskets (Optional)
2	Lockwasher	17	Seal Studs	31	Casing (Flanged)	46	Capscrews for Valve (Optional)
3	End Cap	19	Cartridge Seal	35	Head Gasket	47	Internal Relief Valve (Optional)
4	Bearing Spacer Collar (Outer)	25	Bracket Bushing	36	Rotor and Shaft Assembly	50	Lockwashers
5	Lip Seals	27	Bracket and Bushing Assembly	37	Idler and Bushing Assembly	50A	Washers
6	Tapered Roller Bearings	28	Capscrew/Studs for Bracket	38	Idler Bushing	51	Studs for Flanges
7	Bearing Housing	28A	Nuts for Bracket	39	Idler Pin	52	Nuts for Flanges
8	Bearing Spacer Collar (Inner) (H-QS)	29	Bracket Gasket	40	Head and Idler Pin Assembly	62	Rectangular Key for Shaft
11	Rings, Half Round (K-LS)	30	Pipe Plug	43	Capscrew/Studs for Head	64	Guard
12	Grease Fitting	30B	Pipe Plug	44	Nuts for Head		

EXPLODED VIEW PARTS FOR SERIES 4223AA AND 4323AA MODELS

DANGER !

Before opening any Viking pump liquid chamber (pumping chamber, reservoir, relief valve adjusting cap fitting, etc.) Be sure:

1. That any pressure in the chamber has been completely vented through the suction or discharge lines or other appropriate openings or connections.
2. That the driving means (motor, turbine, engine, etc.) has been "locked out" or made non-operational so that it cannot be started while work is being done on pump.
3. That you know what liquid the pump has been handling and the precautions necessary to safely handle the liquid. Obtain a material safety data sheet (MSDS) for the liquid to be sure these precautions are understood.

Failure to follow above listed precautionary measures may result in serious injury or death.

**CARTRIDGE MECHANICAL
SEAL REPLACEMENT**

MODELS:

H, HL, K, KK, LQ, LL, LS, Q, QS 4223AA Steel
N, R, RS 4323AA Steel

For complete pump disassembly and assembly see pages 5 - 7.

**CARTRIDGE MECHANICAL
SEAL REMOVAL**

1. Insert brass or plastic bar into one of the pump ports and into the space between rotor teeth to prevent rotor and shaft from spinning. If removing the seal while pump is installed, lock shaft to prevent spinning. Bend up tang of lockwasher (Item 2) with flat bladed screw driver or small flat punch and a hammer. With a spanner wrench, remove locknut (Item 1) from shaft (Item 36). Remove lockwasher from shaft.
2. Loosen two set screws in the face of the bearing housing (Item 7), see **Figure 5**, and turn the bearing housing CCW to remove the bearing housing assembly from the bracket (Item 27).

3. Remove bracket guard (Item 64).
 4. Remove the pair of half round rings (Item 11) under the inner spacer collar (Item 8) from the shaft for K-LS size pumps. There are no half round rings on all other size pumps.
 5. If flush plan or barrier fluid tubes are connected to the seal gland (Item 19), turn off and disconnect before removing seal. Place set clips on seal. Loosen the set screws on the cartridge seal collar to free the cartridge seal from the shaft. Remove all fittings and pipe plugs from seal gland. Slide cartridge seal out through bearing housing opening.
 8. Adjust pump end clearance per “End Clearance Adjustment”, page 7.
 9. Tighten setscrews on cartridge seal drive collar to shaft and remove or turn seal centering clips so as to clear the seal drive collar.
 10. Turn shaft by hand or jog motor to check seal drive collar for runout.
 11. Connect flush plan or barrier fluid lines or vent stuffing box, if no flush plan, until liquid is present in stuffing box. Install pipe plugs in any seal gland openings that are not being utilized.
- NOTE:** For maximum seal life, flush plan should be used.
12. Replace bracket window guard.

CARTRIDGE MECHANICAL SEAL INSTALLATION

1. **NOTE:** Burrs left on shaft can damage O-rings on seal sleeve during installation. Inspect shaft for burrs and remove any found with a fine grade of emery cloth.
2. Clean rotor shaft and face of seal chamber on bracket.
3. Place tapered installation sleeve on shaft. Coat rotor shaft, tapered installation sleeve, and O-rings in the inside diameter of cartridge seal sleeve with a generous amount of light oil. **See Figure 3.**

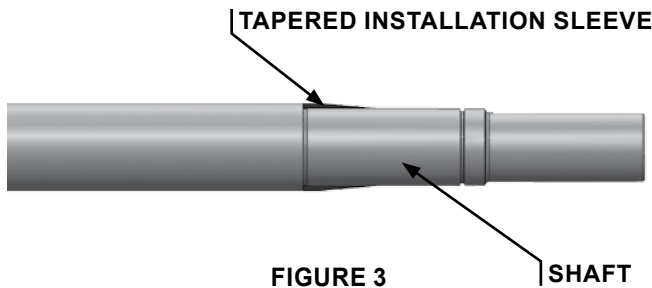


FIGURE 3

4. Slide cartridge seal over installation sleeve on shaft until it contacts the seal chamber face. Remove tapered installation sleeve from shaft.
5. Secure seal gland to bracket face using washers (Items 50 & 50A) and nuts (Item 16) for studs (Item 17). **NOTE:** tighten nuts on studs tight enough to compress seal gland gasket. Tighten only enough to contain leakage and not to distort seal gland.
6. For K-LS sizes, place pair of half round rings in groove on shaft. For all sizes, turn bearing housing assembly CW into bracket until flange on bearing housing is 1/2” from bracket. Do not turn the bearing housing into the bracket completely.
7. Place lockwasher and locknut on shaft, see **Figure 5** for orientation. Tighten locknut per **Table 1** and bend one tang of lockwasher into slot of locknut.

Pump Size	Torque (ft-lbs.)	Torque (N-m)
H and HL	50-70	70-95
K and KK	100-130	140-175
LQ, LL and LS	120-150	165-200
Q, QS and N	170-190	235-255
R and RS	250-270	340-365

TABLE 1 - LOCKNUT TORQUE

DANGER !

Before starting pump, be sure all drive equipment guards are in place.

Failure to properly mount guards may result in serious injury or death.

DISASSEMBLY

DANGER !

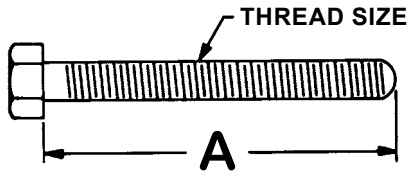
Before opening any Viking pump liquid chamber (pumping chamber, reservoir, relief valve adjusting cap fitting, etc.) Be sure:

1. That any pressure in the chamber has been completely vented through the suction or discharge lines or other appropriate openings or connections.
2. That the driving means (motor, turbine, engine, etc.) has been “locked out” or made non-operational so that it cannot be started while work is being done on pump.
3. That you know what liquid the pump has been handling and the precautions necessary to safely handle the liquid. Obtain a material safety data sheet (MSDS) for the liquid to be sure these precautions are understood.

Failure to follow above listed precautionary measures may result in serious injury or death.

1. Mark head (Item 40) and casing (Item 31) before disassembly to insure proper reassembly.

Remove nuts from head for Q - RS sizes. Sizes H-LS remove capscrews. Remove head from pump For N, R and RS sizes, use jackscrew holes in head, if needed. Proper size and length of jackscrews for pump size are shown in **Figure 4, page 6**. The use of a hoist to support head will facilitate its removal. A lifting eye threaded into the uppermost jackscrew hole will provide adequate connection for hoisting head. If a hoist is not available, cribbing or blocking can be used to support head. This will eliminate having to lift head into position when reassembling pump.



MINIMUM LENGTH OF JACK SCREWS

PUMP SIZE	NO. SCREWS USED	A	THREAD SIZE (INCH)
N	2	3.25	1/2" - 13 UNC
R & RS	2	4.00	5/8" - 11 UNC

FIGURE 4

Do not allow idler (Item 37) to fall from idler pin. Tilt top of head back when removing to prevent this. Avoid damaging head gasket (Item 35).

If pump is furnished with pressure relief valve (Item 47), it need not be removed from head or disassembled at this point. Refer to "Pressure Relief Valve Instructions", page 8.

If pump has jacketed head plate (not illustrated), it will separate from head when it is removed. Avoid damaging the gasket between the jacketed head plate and pump head.

2. Remove idler and bushing assembly.
3. Insert brass or plastic bar into one of the pump ports and into the space between rotor teeth to prevent rotor and shaft from spinning. Bend up tang of lockwasher with flat bladed screw driver or small flat punch and a hammer. With a spanner wrench, remove locknut from shaft. Remove lockwasher from shaft.
4. Loosen two set screws in the face of the bearing housing, see Figure 5, and turn the bearing housing CCW to remove the bearing housing assembly from the bracket.

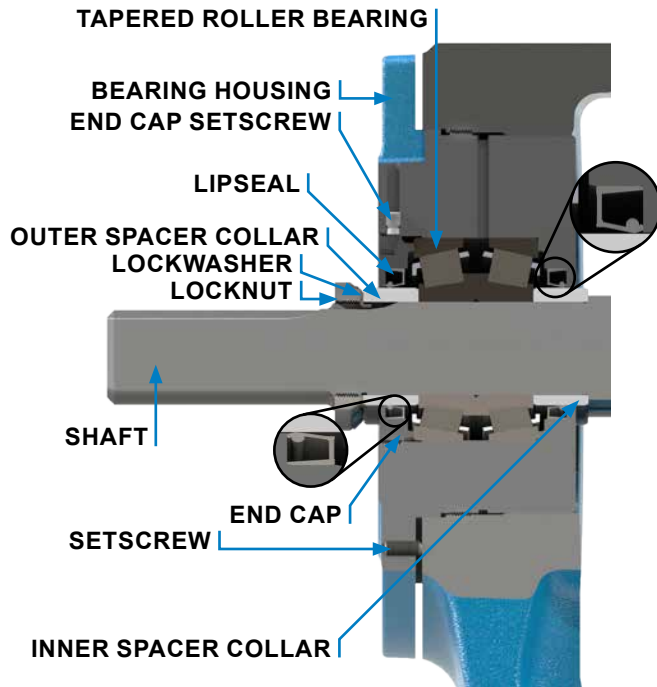


FIGURE 5

5. Remove the pair of half round rings under the inner spacer collar from the shaft for K-LS size pumps. There are no half round rings on all other size pumps.
 6. If flush plan or barrier fluid tubes are connected to the seal gland, turn off and disconnect before removing seal. Remove all fittings and pipe plugs from seal gland. Loosen the set screws on the cartridge seal collar to free the cartridge seal from the shaft. Remove nuts and washers holding seal gland to bracket. Slide cartridge seal out through bearing housing opening.
 7. Carefully remove rotor and shaft to avoid damaging bracket bushing (Item 25).
 8. Loosen two radial setscrews in flange of bearing housing. With a spanner wrench remove the outer end cap (Item 3) with lip seal (Item 5) and outer bearing spacer collar (Item 4) see Figure 5.
 9. Remove both tapered roller bearings (Item 6), and inner bearing spacer collar from the bearing housing.
 10. Clean all parts thoroughly and examine for wear and damage. Check lip seals, roller bearings, bushings, and idler pin and replace if necessary. Check all other parts for nicks, burrs, excessive wear and replace if necessary.
- Wash bearings in clean solvent. Blow out bearings with compressed air. Do not allow bearings to spin; turn them slowly by hand. Spinning bearings will damage race and rollers. Make sure bearings are clean, then lubricate with light oil and check for roughness. Roughness can be determined by turning outer race by hand.
11. Casing inner diameter can be checked for wear or damage while mounted on bracket.

ASSEMBLY

1. If the pump has carbon graphite bushings, Refer to "Installation of Carbon Graphite Bushings", page 7. If the bracket bushing is worn, replace. If bracket bushing has a lubrication groove, install bushing with groove at 12 o'clock position in bracket.
 2. Coat shaft of rotor shaft assembly with light oil. Start end of shaft in bracket bushing turning from right to left, slowly pushing rotor into casing.
 3. If replacing carbon graphite idler bushing, Refer to "Installation of Carbon Graphite Bushings", page 7. Coat idler pin with light oil and place idler and bushing on idler pin in head.
 4. Using a new head gasket, install head and idler assembly on casing. Pump head and casing were marked before disassembly to insure proper reassembly. If not, be sure idler pin, which is offset in pump head, is positioned equal distance between port connections to allow for proper flow of liquid through pump. If pump is equipped with jacketed headplate, install at this time along with new gasket.
- Tighten head capscrews or nuts evenly per TR-804 Capscrew Torques.
5. Slide inner spacer collar over shaft for H-QS sizes. N-RS sizes do not have an inner spacer collar. For K - LS size pumps the recessed end of the collar should be facing head of pump. H-HL and Q-QS size bearing spacer collars are not recessed.

Place pair of half round rings on shaft, if applicable, and slide inner bearing spacer collar over half round rings to lock them in place. There is no pair of half round rings on the H-HL and Q-RS size pumps.

6. Turn the bearing housing CW into the bracket until the flange on the bearing housing is 1/2" from the face of the bracket.
7. If damaged, replace and install lip seal into bearing housing. See Figure 5 for lip seal orientation.
8. Pack tapered roller bearings with grease and press or push bearings into housing with large end of inner races together. It is possible to install bearings incorrectly. For proper assembly see Figure 5.
9. If damaged, replace and install the lip seal in the end cap. See Figure 5 for lip seal orientation. Thread the end cap into the bearing housing along with outer bearing spacer collar and tighten against the bearing.

Tapered roller bearings require preload to operate properly. To set preload tighten end cap so that inner races of bearings cannot be rotated by hand. Make a mark on the outside diameter of the bearing housing and a corresponding mark on the bearing housing end cap. Rotate the bearing housing end cap in a counter clockwise direction until the mark on the outside diameter of the bearing housing is past the mark on the bearing housing end cap by 5/16". This will provide the correct end play for the bearings.

10. Lock end cap in place with two end cap setscrews in the flange of the bearing housing, see Figure 5.
11. Put lockwasher and locknut on shaft. Insert length of plastic or brass through port opening between rotor teeth to keep shaft from turning. Tighten locknut per Table 1. Bend one tang of lockwasher into slot of locknut. If tang does not line up with slot, tighten locknut until it does. Failure to tighten locknut or engage lockwasher tang could result in early bearing failure and cause damage to pump.

Remove length of plastic or brass from port opening.

12. Adjust pump end clearance per "End Clearance Adjustment".
13. Lubricate all grease fittings with multi-purpose polyurea grease, NLGI #2.
14. Replace guard on bracket.

DANGER !

Before starting pump, be sure all drive equipment guards are in place.

Failure to properly mount guards may result in serious injury or death.

END CLEARANCE ADJUSTMENT

1. Seal design varies from manufacturer to manufacturer. Consult seal supplier instructions or representative for recommendations on disengaging the seal from the shaft prior to end clearance adjustment.

2. Loosen the two set screws in the outer face of the bearing housing, see Figure 5, Page 6 and turn the thrust bearing assembly clockwise until it can no longer be turned by hand. Turn the bearing housing counter-clockwise until the rotor and shaft can be turned by hand, but with a noticeable drag.
3. Make an axial mark across both the bearing housing and bracket. For standard end clearance, turn the thrust bearing assembly CCW the required length measured on the outside diameter of the bearing housing from the mark on the bracket, see Table 2.

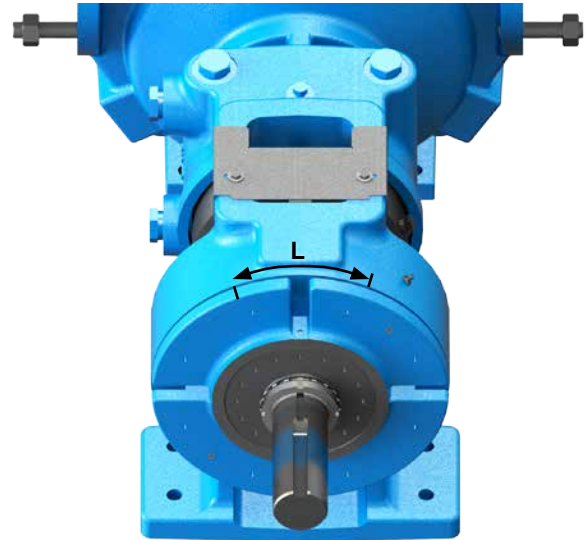


FIGURE 6

PUMP SIZE	STANDARD END CLEARANCE (Inch)	LENGTH L, FIGURE 6 (Inch)	LENGTH L FOR 0.001" ADDITIONAL END CLEARANCE (Inch)
H & HL	0.007	2.2	0.3
K & KK	0.010	3.2	0.3
LQ, LL & LS	0.010	3.2	0.3
Q & QS	0.015	6.8	0.5
N	0.015	7.4	0.5
R & RS	0.020	10.5	0.5

TABLE 2
BEARING HOUSING ADJUSTMENT
FOR END CLEARANCE FOR AA PUMPS

4. Tighten the two set screws, in the outboard face of the bearing housing, with equal force against the bracket.
NOTE: Be sure the shaft can rotate freely. If not, either perform the end clearance adjustment again or disassemble the pump and look for damage to the pump components.
5. Engage seal to shaft per seal manufacturers instructions.
6. High viscosity and high temperature liquids require additional end clearances. The amount of extra end clearance depends on the viscosity of the liquid pumped. For specific recommendations, please consult your local distributor.

INSTALLATION OF CARBON GRAPHITE BUSHINGS

When installing carbon graphite bushings, extreme care must be taken to prevent breaking. Carbon graphite is a brittle material and easily cracked. If cracked, the bushing will quickly disintegrate. Using a compatible lubricant will help in installation. The additional precautions listed below must be followed for proper installation.

1. A press must be used for installation.
2. Be certain bushing is started straight.
3. Do not stop pressing operation until bushing is in proper position. Starting and stopping will result in a cracked bushing.

4. Check bushing for cracks after installation.

Carbon graphite bushings with extra interference fits are frequently furnished for high temperature operation. These bushings must be installed by a shrink fit.

1. Heat bracket or idler to 750°F.
2. Install cool bushing with a press.
3. If facilities are not available to reach 750°F. temperature, it is possible to install with 450°F. temperature; however the lower the temperature the greater the possibility of cracking the bushing.

Consult local distributor with specific questions on high temperature applications.

PRESSURE RELIEF VALVE INSTRUCTIONS

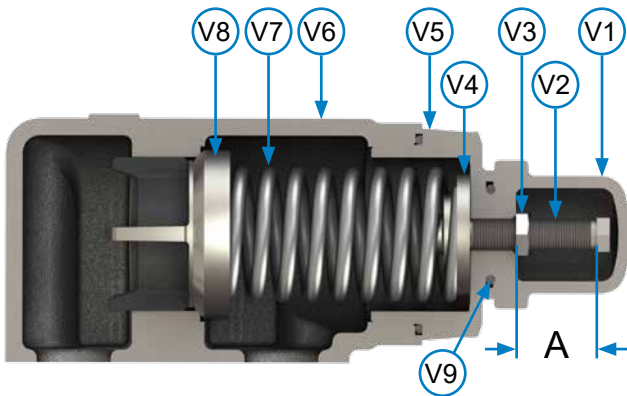


FIGURE 7 - SIZES H AND HL

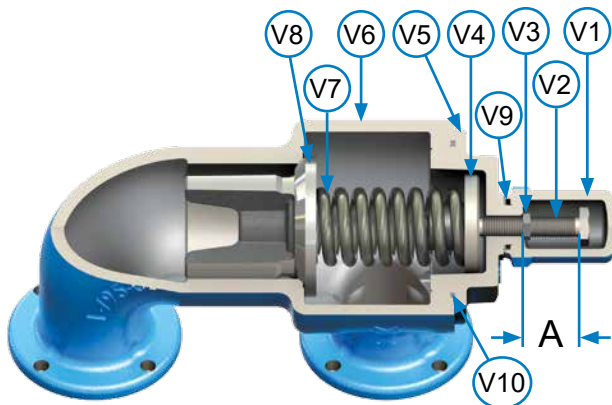


FIGURE 8 - SIZES K, KK, L, LQ, LL, Q, QS, N & R

VALVE - LIST OF PARTS

V1. Valve Cap	V6. Valve Body
V2. Adjusting Screw	V7. Valve Spring
V3. Lock Nut	V8. Poppet
V4. Spring Guide	V9. Cap Gasket
V5. Bonnet	V10. Bonnet Gasket

DISASSEMBLY

DANGER !

Before opening any Viking pump liquid chamber (pumping chamber, reservoir, relief valve adjusting cap fitting, etc.) Be sure:

1. That any pressure in the chamber has been completely vented through the suction or discharge lines or other appropriate openings or connections.
2. That the driving means (motor, turbine, engine, etc.) has been "locked out" or made non-operational so that it cannot be started while work is being done on pump.
3. That you know what liquid the pump has been handling and the precautions necessary to safely handle the liquid. Obtain a material safety data sheet (MSDS) for the liquid to be sure these precautions are understood.

Failure to follow above listed precautionary measures may result in serious injury or death.

Mark valve and head before disassembly to insure proper reassembly.

1. Remove valve cap.
2. Measure and record length of extension of adjusting screw. Refer to "A" dimension on Figure 7 & Figure 8.
3. Loosen locknut and turn adjusting screw CCW until spring pressure is released.
4. Remove bonnet, spring guide, spring and poppet from valve body. Clean and inspect all parts for wear or damage and replace if necessary.

ASSEMBLY

Reverse procedures outlined under Disassembly. If valve is removed for repairs be sure to replace in same position. Relief valve adjusting screw cap must always point towards suction side of pump. If pump rotation is reversed, remove relief valve and turn end for end.

PRESSURE ADJUSTMENT

If a new spring is installed or if pressure setting of pressure relief valve is to be changed from that which the factory has set, the following instructions must be carefully followed.

1. Carefully remove valve cap which covers adjusting screw.
Loosen locknut.
2. Install a pressure gauge in discharge line for actual adjusting operation.
3. Turn adjusting screw CW to increase pressure and CCW to decrease pressure.
4. Close the discharge line at a point beyond the pressure gauge. Limit the amount of time the pump is being operated at this condition. The temperature inside the pump will rise rapidly.
5. Once pressure is set, tighten locknut and replace cap gasket and valve cap.

IMPORTANT

When ordering parts for pressure relief valve, always give model number and serial number of pump as it appears on nameplate and name of part wanted. When ordering springs, be sure to give pressure setting desired.

VIKING PUMP

WARRANTY

Viking pumps, strainers and reducers are warranted to be free of defects in material and workmanship under normal conditions of use and service. The warranty period varies by type of product. A Viking product that fails during its warranty period under normal conditions of use and service due to a defect in material or workmanship will be repaired or replaced by Viking. At Viking's sole option, Viking may refund (in cash or by credit) the purchase price paid to it for a Viking product (less a reasonable allowance for the period of use) in lieu of repair or replacement of such Viking product. Viking's warranty is subject to certain restrictions, limitations, exclusions and exceptions. A complete copy of Viking's warranty, including warranty periods and applicable restrictions, limitations, exclusions and exceptions, is posted on Viking's website (www.vikingpump.com/warranty/warranty-info). A complete copy of the warranty may also be obtained by contacting Viking through regular mail at Viking Pump, Inc., 406 State Street, Cedar Falls, Iowa 50613, USA.

THIS WARRANTY IS AND SHALL BE VIKING'S SOLE AND EXCLUSIVE WARRANTY AND IS IN LIEU OF ALL OTHER WARRANTIES, EXPRESS OR IMPLIED, INCLUDING, BUT NOT LIMITED TO, ALL WARRANTIES OF MERCHANTABILITY, FITNESS FOR A PARTICULAR PURPOSE AND NON-INFRINGEMENT, ALL OF WHICH OTHER WARRANTIES ARE EXPRESSLY EXCLUDED.

THE RIGHTS AND REMEDIES UNDER THIS WARRANTY ARE AND SHALL BE THE SOLE AND EXCLUSIVE RIGHTS AND REMEDIES AGAINST VIKING. EXCEPT FOR THE SPECIFIC LIABILITIES AND OBLIGATIONS PROVIDED UNDER THIS WARRANTY, VIKING SHALL HAVE NO LIABILITY OR OBLIGATION WITH RESPECT TO ANY PRODUCT CLAIMED TO BE DEFECTIVE IN ANY MANNER.

UNDER NO CIRCUMSTANCES SHALL VIKING BE LIABLE UNDER THIS WARRANTY OR OTHERWISE FOR SPECIAL, INCIDENTAL, INDIRECT, CONSEQUENTIAL OR PUNITIVE DAMAGES OF ANY KIND, INCLUDING, BUT NOT LIMITED TO, LOST OR UNREALIZED SALES, REVENUES, PROFITS, INCOME, COST SAVINGS OR BUSINESS, LOST OR UNREALIZED CONTRACTS, LOSS OF GOODWILL, DAMAGE TO REPUTATION, LOSS OF PROPERTY, LOSS OF INFORMATION OR DATA, LOSS OF PRODUCTION, DOWNTIME, OR INCREASED COSTS, IN CONNECTION WITH ANY PRODUCT, EVEN IF VIKING HAS BEEN ADVISED OR PLACED ON NOTICE OF THE POSSIBILITY OF SUCH DAMAGES AND NOTWITHSTANDING THE FAILURE OF ANY ESSENTIAL PURPOSE OF ANY PRODUCT.